



The Corporation of the County of Wellington
Information, Heritage and Seniors Committee
Minutes

September 13, 2023
Wellington Terrace Boardroom

Present: Warden Andy Lennox
 Councillor Mary Lloyd (Chair)
 Councillor Diane Ballantyne
 Councillor Doug Breen
 Councillor Jeff Duncan
 Eddie Alton
 Lucia Costanzo
 Walter Trachsel
 Julie Wheeler Bryant

Also Present: Steve O'Neill

Staff: Jana Burns, Wellington Place Administrator
 Shauna Calder, Manager of Finance
 Nicole Cardow, Deputy Clerk
 Ken DeHart, County Treasurer
 Chanda Gilpin, Assistant Chief Librarian
 Rebecca Hine, Chief Librarian
 Scott Wilson, CAO

1. Call to Order

At 4:30 pm, the Chair called the meeting to order.

2. Declaration of Pecuniary Interest

There were no declarations of pecuniary interest.

3. Seniors

3.1 Wellington Terrace Financial Statements as of August 31, 2023

1/8/23

Moved by: Councillor Ballantyne

Seconded by: Councillor Duncan

That the Financial Statements for the Wellington Terrace as of August 31, 2023 be approved.

Carried

3.2 Long Term Care Development Funding

2/8/23

Moved by: Warden Lennox

Seconded by: Councillor Breen

That the Long-Term Care Development Funding report be received for information.

Carried

3.3 Tour of Simcoe Continuum of Care Update - Verbal

The Committee discussed the possibility of a tour of the Simcoe County Continuum of Care facility. The Clerk will send a poll to Council to determine how many would like to attend and a date that works for most.

4. Museum and Archives

4.1 Museum and Archives Financial Statements as of August 31, 2023

3/8/23

Moved by: Councillor Ballantyne

Seconded by: Councillor Breen

That the Financial Statements as of August 31, 2023 for the County Museum and Archives be approved.

Carried

4.2 WCMA Update

4/8/23

Moved by: Warden Lennox

Seconded by: Councillor Ballantyne

That the WCMA Update Report be received for information and forwarded to County Council

Carried

4.3 Wellington Place Update

5/8/23

Moved by: Councillor Breen

Seconded by: Councillor Duncan

That the Wellington Place Update report be received for information and forwarded to County Council.

Carried

4.4 Wellington Place Pavilion

6/8/23

Moved by: Councillor Ballantyne

Seconded by: Councillor Breen

That the Wellington Place updated pavilion design with the removal of the amphitheater be approved to proceed to tender.

Carried

5. **Recess**

At 5:44 pm the Committee recessed until 6:20 pm.

6. **Library Board**

6.1 Declaration of Pecuniary Interest

There were no declarations of pecuniary interest.

6.2 Library Financial Statements as of August 31, 2023

7/8/23

Moved by: Walter Trachsel

Seconded by: Eddie Alton

That the Financial Statements as of August 31, 2023 for the County Library Service be approved.

Carried

6.3 Library Update - Summer 2023

8/8/23

Moved by: Lucia Costanzo

Seconded by: Julie Wheeler Bryant

That the Information Services Librarians report for Summer 2023 and the Next Chapter newsletter for September 2023 be received for information.

Carried

6.4 Library Highlights - Summer 2023

9/8/23

Moved by: Walter Trachsel

Seconded by: Lucia Costanzo

That the Library Highlights for summer 2023 be received for information.

Carried

7. Adjournment

At 6:45 pm, the Chair adjourned the meeting until October 11, 2023 or at the call of the Chair.

Mary Lloyd
Chair
Information, Heritage and Seniors Committee



COUNTY OF WELLINGTON

COMMITTEE REPORT

To: Chair and Members of the Information, Heritage and Seniors Committee
From: Shauna Calder, Manager of Finance
Date: Wednesday, September 13, 2023
Subject: Long Term Care Development Funding

Background:

In November 2022, the Ministry of Long-Term Care released the Long-Term Care Home Capital Development Funding Policy, which governs the provision of funding to eligible operators to support and accelerate the development of new long-term care beds. This report is being brought forward to provide Committee with a high-level understanding of the capital and operating costs that are associated with the creation of new Long-Term Care beds.

Development funding includes three components:

1) Construction funding subsidy per diem

The County of Wellington would qualify under the rural stream for this funding component. The per diem would be based on a daily rate per bed for every day that the bed is in operation. Currently this rate is \$20.78 per bed per day or \$7,585 per bed per year. Payments would be made monthly for a period of 25 years through the Ministry funding envelope. Depending on the size of the redevelopment a top up per unit would also be available. This would range between \$1.50 per bed for small homes under 96 beds to \$0 for large homes over 161 beds.

2) Development grant

The County of Wellington would qualify under the rural stream for this funding component. The grant would be based on an amount per bed and is intended to cover eligible construction costs. Eligible construction costs include the actual direct costs of construction, land purchase specific to long term care home projects, development charges and signage. Ineligible costs to be funded municipally include furniture and equipment, building permits, architectural and other professional fees, and any costs related to the acquisition of land, financing, surveys, or general administration. Currently the maximum funding available would be \$29,246 per bed.

3) Planning grant for non-profit homes

A one-time planning grant of \$250,000 that is available to non-profit homes only upon entering into a Development Agreement.

Development of new long-term care beds would also require ongoing operating costs for the building and most significantly, staffing. The total operating costs for any new development would depend on several factors including the number of beds and the debt required for construction.

Costs to operate a long-term care home are significant. The total operating budget for the Wellington Terrace amounts to approximately \$152,500 per bed annually. This cost is currently funded through a combination of resident fees (\$27,100), provincial subsidy (\$69,400), and municipal contributions (\$56,000).

Recommendation:

That the Long-Term Care Development Funding report be received for information.

Respectfully submitted,



Shauna Calder, CPA, CGA
Manager of Finance



COUNTY OF WELLINGTON

COMMITTEE REPORT

To: Chair and Members of the Information, Heritage and Seniors Committee
From: Jana Burns, Wellington Place Administrator
Date: Wednesday, September 13, 2023
Subject: WCMA Update

Summer Visitor Statistics

The WCMA welcomed 8,484 visitors to the museum over the summer, including events but not including school groups or programmes. The maintenance team and summer student Abby Fergusson deserve praise for ensuring the grounds were as much a pleasure to walk as they were to view. According to guest book comments, visitors traveled from across Ontario (Sarnia to Ottawa and across the GTA), other Canadian provinces, the United States (California, Texas, Tennessee, Georgia, Arizona, New Jersey), and international visitors from the United Kingdom, Poland, Hong Kong, India, China, Zimbabwe, Colombia, Argentina, and Iran.

Submitted commentary includes:

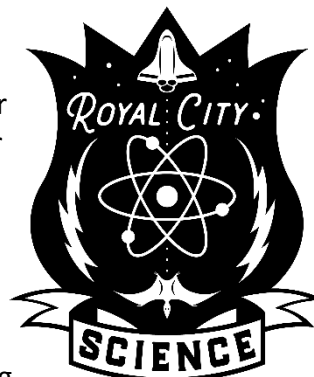
- "Very interesting history."
- "Love your architecture and 1920 history along with poor people survival."
- "Kids absolutely love it here, also got married here 7 years ago."
- "A very interactive museum."
- "We are from country of Iran...We came here in Canada since Nov 2022, and now we are feel better. We LOVE Canada."
- "Beautiful Sonic section – kids loved it! Thanks!"
- "We heard this was the place to be"
- "I loved the scream chamber!"
- "Beautifully preserved history."

General Updates

- Wedding bookings are returning. 2024 dates in May and September are fully booked, with October nearing full.
- On August 10, the WCMA hosted Chieftain Adam Fergusson of Scotland, honorary dignitary to the Fergus Scottish Festival. Also present were Senator Black, Mayor Watters, and members of local council, who enjoyed tea in the Victoria Garden in addition to a tour of the building. Sir Adam was most complementary of the site and effort to preserve local history. He noted that Scotland houses its history in national institutions rather than local museums, which in his opinion leaves most residents on the street not aware of their community's own history.
- Upon the wonderful request of Councillor Duncan, an opportunity for Councillors to "geek-out" over the recently renovated artifact storage building is being organized for November!

Royal City Science

In 2020, two University of Guelph professors formed Royal City Science, a series of workshops and events, to inspire young children through informal science, technology, engineering, and math. Watching them from Elora, staff have noticed their success and invited the professors to visit the WCMA and consider partnering to offer STEM related events to children in Wellington County. Staff met with the professors and the conversation grew to brainstorming collaborative events beginning in 2024. Staff are excited to announce that from April 8 to 12, the WCMA will host Space Week. The timing is opportune, as on April 8 there will be a total solar eclipse passing over Mexico, the United States, and Canada. A total solar eclipse occurs when the moon passes between the sun and earth, completely blocking the sun. Even more exciting, Royal City Science is also currently constructing a planetarium, which will be operational by Space Week.



WCMA Programmes

Summer Camp

The WCMA has hosted a successful summer full of camp for children ages six to ten years. Summer students Faith Van Ankum and Sierra Moeskops designed and implemented a creative and entertaining camp theme each week. While they may have been exhausted by August 31, their enthusiasm and commitment were exemplary. Demand for camp is high in Wellington County and this was the first year that camp was held over the entire summer. Staff are happy to introduce young people to their Museum and Archives, while engaging them in fun activities. To ensure staff are properly equipped to deal with emergencies, a Missing Child Policy has been developed, which includes protocols for such an event. Staff have met with the OPP to review the policy and consulted with Children's Early Years.

Outreach and Education

Programming staff had a very busy summer. Several community groups booked tours over July and August, as seen in the chart below. There was a notable increase in interest from Terrace residents to visit the museum, who were accompanied with nurses and recreational therapists.

Outreach Theme	Number of Participants
July 10 – Minto Camps (Palmerston)	30
July 11 – Minto Camps (Harriston)	50
July 11/18/25 – Terrace (First Responders)	30
July 22 – Summer Work Students Exchange (Poor House)	9
July 26 – Seniors' Centre of Excellence (First Responders)	30
August 1/8/15 – Terrace (Titanic)	30
August 4 – Elora Library Book Club (Poor House)	6
August 5 – Terrace Private Tour (Poor House)	4
August 8 – Senior's Centre of Excellence (50s & 60s)	25
August 11 – Adam Fergusson Private Tour (Poor House)	7
August 12 – Terrace Private Tour (Poor House)	12
August 22 – Private Poor House Tour	6
August 25 – Senior's Centre of Excellence (Trivia Night)	30
August 31 – Terrace Private Tour (Poor House)	5
Total Participants	274

In addition to the above outreach, WCMA staff provided educational programming to 92 students in grades one to five, as part of the Catholic District School Board summer camps. The camps were held over two days in July and consisted of a modified programme of simple machines, rocks, minerals, and structures.

Concert Series

While in the past all concert advertisements were pooled together in website updates, posters, newspaper ads and social media, this year staff focused heavily on individual social media advertisements. This was in addition to the regular forms of advertising, including highlights on the radio series SwapTalk with McKim. The result was success, with almost 500 attendees, compared to the previous year’s 120.



Concerts	Number of Participants
July 13 – Travel Worn	88
July 20 – HighBanks	65
July 27 – Natalie Reis	52
August 3 – Fergus Pipe Band & Great Big Caesar	140
August 17 – The Rogersons	93
August 24th – McTalla Road	55
Total Participants	493

Poor House Tours

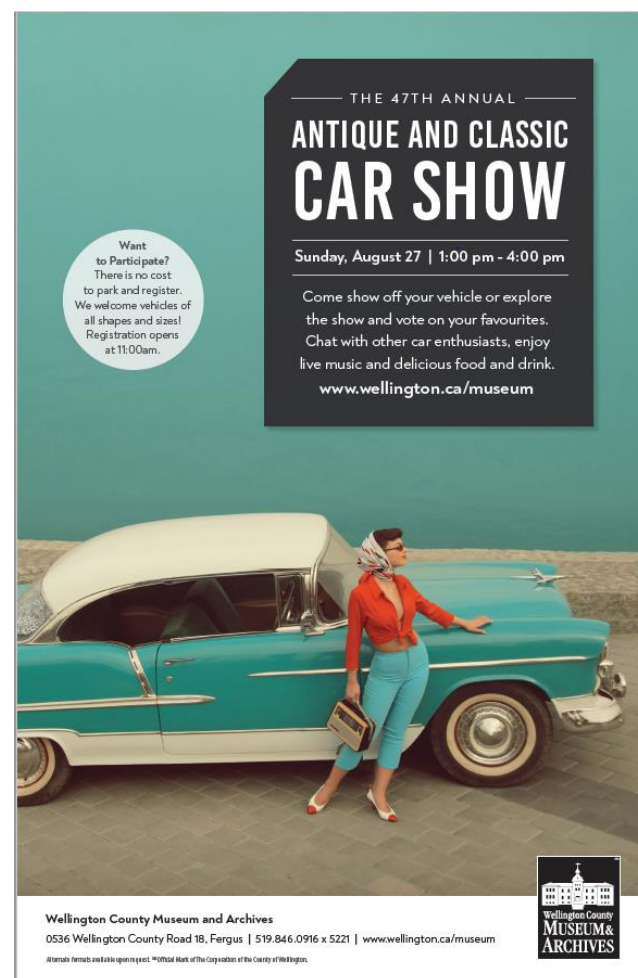
The WCMA began offering Poor House Tours in 2022, and unlike last year, visitors were charged this year \$5 per person or \$10 for a family. Tours were well attended, with a surprising mix of Wellington County residents and tourists. Feedback was very positive, and tours will continue to be offered next summer.

Tours	Number of Participants
July 8	25
July 15	30
July 22	27
July 29	30
August 5	30
August 12	17
August 19	8
August 26	9
Total Participants	176

Antique and Classic Car Show 2023

The 47th annual Car Show took place August 27 with 370 vehicles, including 94 new participants. There were approximately 1,500 visitors and participants throughout the day, which was filled with sunshine and pleasant temperatures.

New this year, Laza Food and Beverage brought their food truck and sold ice cream, popsicles, drinks and samosas. WCMA also offered attendees wine and beer, and barbecued 166 sausages and 132 hamburgers.

A promotional poster for the 47th Annual Antique and Classic Car Show. The poster features a teal background with a vintage car and a woman in a red jacket and blue pants. Text on the poster includes the event title, date, time, and location. A circular callout box provides registration information.

THE 47TH ANNUAL
**ANTIQUE AND CLASSIC
CAR SHOW**

Sunday, August 27 | 1:00 pm - 4:00 pm

Come show off your vehicle or explore the show and vote on your favourites. Chat with other car enthusiasts, enjoy live music and delicious food and drink.
www.wellington.ca/museum

Want to Participate?
There is no cost to park and register. We welcome vehicles of all shapes and sizes! Registration opens at 11:00am.

Wellington County Museum and Archives
0536 Wellington County Road 18, Fergus | 519.846.0916 x 5221 | www.wellington.ca/museum

Alternate formats available upon request. *Official Mark of the Corporation of the County of Wellington.

Wellington County
MUSEUM &
ARCHIVES

In total, Programming staff provided education and amusement for over 2,600 individuals this summer.

Theme	Number of Participants
Outreach	274
Educational Programs	92
Concert Series	493
Poor House Tours	176
Summer Camp	94
Car Show	1,500
Total Participants	2,629

Christmas Market

Vendor applications opened at the start of summer and closed August 8. In total, 155 applications were received, and 90 vendors were accommodated for the Market this December. The Christmas Market takes place Friday, December 1 from 4:00pm to 9:00pm and Saturday, December 2 from 12:00pm to 5:00pm.

Coming Up!

- Elvis Movie Night September 9
- Multicultural Festival September 23
- Murder Mystery October 27 and 28
- Cemetery Tours October 20, 21, 27 and 28
- Halloween Tots November 1
- Halloween Walk November 1

The poster features a dark background with vibrant, colorful abstract shapes on the left. It includes circular inset photos of a person in a feathered costume, a woman feeding a child, and a lion dance head. The text is in various colors and fonts, providing details about the festival's date, time, location, and admission.

WELLINGTON COUNTY
**multicultural
festival**

SATURDAY | SEPTEMBER
11:00 am TO 4:00 pm | **23**

Celebrate Wellington County's vibrant cultures and communities at our first Multicultural Festival! **Bring a chair** and come to the Wellington County Museum grounds for a day of fun for the whole family!

Free Admission

For more details visit
www.wellington.ca/multiculturalfestival

Exhibitions Update

Cola Goes Better with Elvis: The Rick Clark Collection

**COLA GOES
BETTER WITH
ELVIS**

The Rick Clark Collection

— OPENS JULY 22 —

Discover the King of Rock and
Roll and his favourite Cola
beverage in Wellington County
Collects latest exhibit series.



Wellington County Museum and Archives | 519.846.0916 x 5221 | www.wellington.ca/museum



“Cola Goes Better with Elvis” opened on July 22, featuring Elvis and Coca-Cola memorabilia from the collection of Rick Clark, a recently retired County of Wellington employee. Tour groups of Wellington Terrace residents and staff have enjoyed personal guided tours given by Rick himself, and our young visitors have rapidly filled up the Coca-Cola colouring wall.

On Saturday, September 9, we are holding a movie night featuring the 2022 Elvis movie. Tickets are \$10, which provides admission to the movie and complimentary popcorn and a Coca-Cola beverage. For an additional \$5, visitors can purchase candy or a Coca-Cola ice cream float. Following the movie, visitors will enjoy a guided tour of the exhibition with Rick Clark and Amy Dunlop, Assistant Curator.

Artifact Storage Building Update

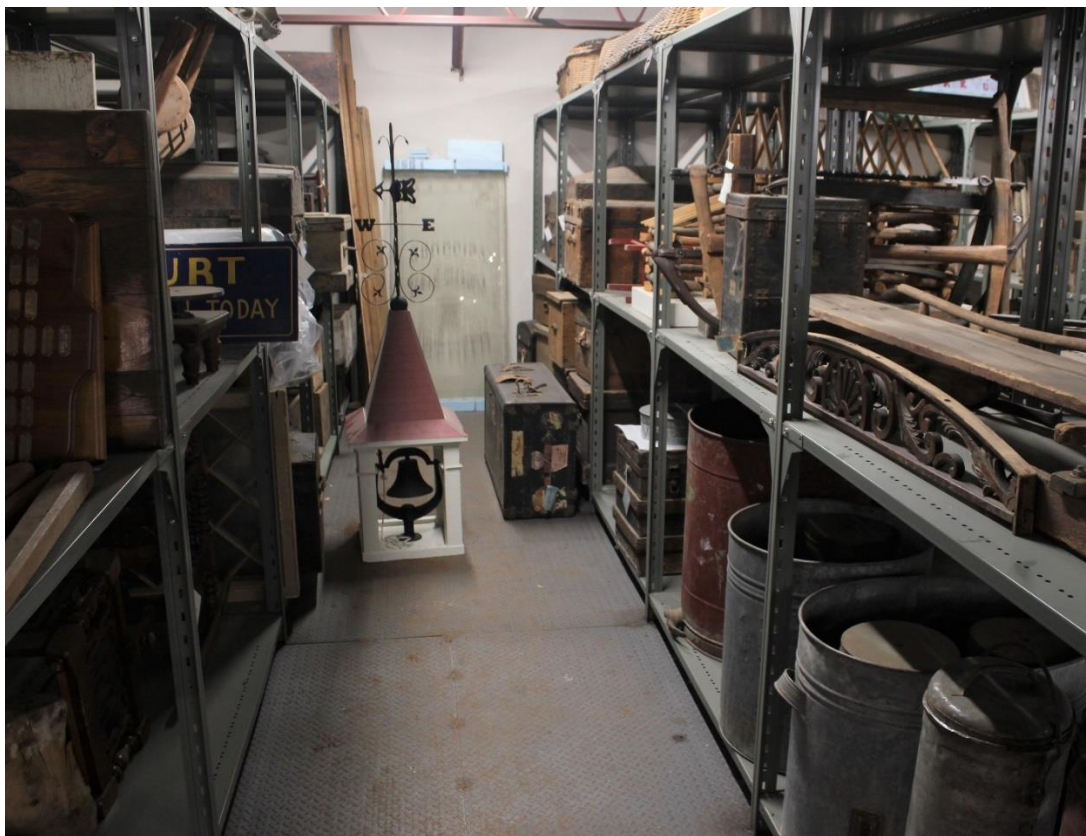
Over the course of 12 weeks in summer 2023, Emily Benedict (WCMA Conservator) and Eden Heslett (WCMA Summer Student) completed the installation of new shelving units and the reorganization of artifacts on the mezzanine level of the large artifact storage building.

The project involved building new shelving units, cleaning artifacts prior to moving, verifying accession numbers in the collections database, creating new tags, and cross-referencing accession numbers with physical collections records as needed. This is the first phase of a complete reorganization of this collection space, to be followed by the cleaning and reorganization of large artifacts on the main floor of the building, and a full inventory.

The 2023 reorganization at a glance:

- 170 feet of new shelving added, consisting of 85 individual shelves
- 577 artifacts were moved and cleaned, including:

- 173 artifacts moved onto the “west” (new) mezzanine, including:
 - 49 windows
 - 39 chairs and benches
- 404 artifacts reorganized on the “north” (original) mezzanine, including:
 - 29 trunks and chests
 - 22 signs
 - 16 models
 - 20 washing machines and dryers
 - 11 sewing machines
 - 20 boxes containing archaeological material (with space left for this collection to double as it is anticipated to do within the year, when material from the stage 4 excavation of the McLeister site is received)
- Our 1905 “New Favorite” threshing machine, made by Ernst Bros. of Mount Forest has been moved to a new central spot on the main floor of the artifact storage building



Shelving and aisle on existing mezzanine, before reorganization.

When the shelving on the existing mezzanine reached capacity, staff had to move some artifacts into aisle spaces as a temporary solution. Artifacts were stored on every available bit of shelf space, which meant some artifacts were stored where they would fit, but not where they properly belonged.

Artifacts are now grouped according to type, following the standard museum nomenclature system which groups artifacts into categories based on their original intended function. Space has been left to allow for movement of artifacts up from the main floor of the building onto the mezzanine space, and for artifacts to move from at-capacity storage areas inside the main building out to the large artifact storage building.



Same aisle, post-reorganization. Wire racks will be hung at the end of each aisle to hang long artifacts like tools that are better stored vertically instead of lying flat on shelves.



New shelving unit on expanded mezzanine for small furniture items like chairs, benches, school desks.



Open area of original mezzanine prior to reorganization, where sewing machines, washing machines, doors, windows, and non-collection material were all stored close together, preventing staff from accessing parts of the collection.



Same section of original mezzanine, after reorganization. Space has been left to allow for expansion of the collection in this area, including the doubling of archaeological artifacts (shelving unit in background), and movement of furniture out from the attic of the main museum building, which has reached capacity. Following accepted best practices for museum collections storage, non-collection material such as surplus frames, boxes of brochures, extra office chairs, tools and equipment, have been moved off the mezzanine to keep this material separate from the artifact collection.

While it is not always possible to completely eliminate this material from collections storage, staff aim to minimize the amount of non-collection material retained, and to contain the material to a defined area. This way the material is not mixed with the collection or pose a preservation risk to the artifacts.

The next step in the building reorganization is to clean and reorganize the large artifacts such as the agricultural equipment, or the vehicles on the main floor of the storage building.



Moments in Time

Something the archivists regularly hear in the Wellington County Archives Reading Room is, “I remember this! I have a photo of myself standing in front of it. It doesn’t exist anymore.”

With over 100,000 photographs in the collection, the Archives is proud to have images that illustrate the history and evolution of Wellington County. This summer, the Archives team and summer student, Eden Heslett, toured the County and each municipality to take photos of archival images held up to their present-day locations. This resulted in a beautiful collection, examining both how things have changed and how they have stayed the same.

The project, titled The Moments in Time Map, was a result of the 2023 January all staff brainstorm day, and the work took place over the course of the summer. The archives team was thrilled to interact with residents and organizations to speak about their shared love: County history. Each municipality had champions ready to help identify where things once were when mysteries arose. From the Mount Forest Museum and Archives to the Palmerston Railway Museum to local historical societies in each town, the team was grateful and inspired by the work undertaken by County residents. Staff are proud and humbled to be a part of the shared mission to preserve and showcase the County’s history.

The Moments in Time Map is an online collection, a celebration of the County’s past and present. When visitors view the map on the County website, they are able to select which municipality and which category they prefer to see. For the first round of photos the categories are bridges, churches, natural resources, commercial businesses, cemeteries, and post offices.

When launched online this fall, residents will see what things used looked like in their community. Staff hope that the map is an enjoyable way to explore the Archives’ collection in a different way, and to encourage visitors to submit their photographs of their community for future generations to explore.

WCMA Accessibility Plan

Each year the WCMA applies to receive approximately \$52,000 from the provincial Community Museum Operating Grant (CMOG). This year applicants are required to submit an Accessibility Plan, which draws on the Physical Plant Standard Policy and Community Standard Policy. In addition to drawing from these policies, the WCMA Accessibility Plan, which was developed over the summer, uses the framework of the County of Wellington Accessibility Plan 2022-2026 in reviewing its practices, communication, infrastructure, and policies for accessibility.

Recommendation:

That the WCMA Update Report be received for information and forwarded to County Council

Respectfully submitted,

A handwritten signature in black ink, appearing to read 'J Burns', written in a cursive style.

Jana Burns
Wellington Place Administrator



COUNTY OF WELLINGTON

COMMITTEE REPORT

To: Chair and Members of the Information, Heritage and Seniors Committee
From: Jana Burns, Wellington Place Administrator
Date: Wednesday, September 13, 2023
Subject: Wellington Place Update

Aboyne Rural Hospice

The Aboyne Rural Hospice leads had the opportunity to present to the Ontario Ministry of Health at the recent Association of Municipalities of Ontario conference in London. The Ministry is pleased to hear of the progress to date and is receptive to the philosophy of providing medical assistance in dying. As part of the application process for the new hospice, the Ministry advised the leads to be proactive in fundraising the required \$2.5 million. The business case for the Aboyne Rural Hospice has been updated to reflect the current community context. For example, of the approximately 830 palliative care patients in 2022, approximately 50% went to hospital, requiring that the proposed hospice would require ten beds rather than the originally suggested six. A total of \$2 million has been pledged to the project thus far.

The Hospice leads look forward to hosting a community event on September 15 at 4:30pm to 7:30pm in the tent by the WCMA toboggan hill. Four Family Health Teams, Wellington Hospice, Paramedicine, The Waterloo Wellington Older Adult Strategy, and their many volunteers will be present. Attendees can expect ice cream, popcorn, food cooked by local restaurant The Evelyn, music, and craft tables for children.

Prior to the community event, the County will be installing the below sign both on Frederick Campbell Street and a smaller version of the sign on the Trestle Bridge trail behind the proposed location.

Future Site Aboyne Rural Hospice

Finally, a residential hospice is coming to rural Wellington County! The Aboyne Rural Hospice hopes to bring end-of-life care close to home.





www.aboyneruralhospice.org

Land generously donated by the County of Wellington.



ABOYNE RURAL HOSPICE

Indigenous Gathering Circle

The Indigenous Gathering Circle has proven to be a valuable meeting place for building new relationships within the community. Since its launch, the Indigenous Advisory Committee (IAC) has met with many individuals and community agencies inside the Gathering Circle to talk about the space, share teachings, and build relationships. Over the summer, Amber Holmes, Pedagogical Leader with the Children's Early Years and IAC member has met with representatives from the Wellington County OPP, Groves Memorial Community Hospital, City of Guelph Older Adult Strategy, Canadian Mental Health Association Waterloo Wellington, Aboyne Rural Hospice, the Wellington Advertiser, the College of Early Childhood Educators, and members of the Children's Early Years Division. Through her newfound relationships with the local OPP detachment, Amber connected with retired OPP Officer Rick Romaniuk, who graciously provided stunning drone images, including the one below, of the Indigenous Gathering Circle during the early planting season in June.



Children and staff at Wellington Place Child Care Centre have also engaged in relationship with Amber Holmes since 2022, beginning with their first visit to the Living in Relation Exhibit at the WCMA. This year on Anishinaabe Giizhigad (Anishinaabe Day – June 6) Amber held ceremony in the Indigenous Gathering Circle alongside staff and children to plant wiingashk (sweetgrass) and to share teachings about the land and the medicines the children were encountering. Since then, the Wellington Place Child Care Centre has welcomed Amber into their programme through her work as a Pedagogical Leader, with regular visits including teachings, sharing stories, and providing mentorship for the

programme educators. The children and staff at Wellington Place continue to be deeply engaged in developing relationships with the Indigenous Gathering Circle, the medicines planted there, and the other-than-human teachers that live there. A resident red-tailed hawk serves as the guardian for the Indigenous Gathering Circle and is often spotted by individuals who visit, which has been a valuable teaching and learning opportunity for community that is in relationship with Amber and the Indigenous Gathering Circle. The children and staff at Wellington Place have come to know the hawk by the traditional name Meskwaniisi (mesk-wanna-knee-say) which is the Anishnaabemowin word for red-tailed hawk. Through ongoing teachings alongside Amber, the children and staff explore Indigenous pedagogies and decolonizing approaches to early learning, and experience deepening connections to the land, plants, and animals they encounter in the space. Through the course of the mentorship relationship, Meskwaniisi has gifted the programme with three miigwanag (feathers), and through ceremony, Amber has collected, wrapped, and gifted these feathers back to the programme, along with a display of documentation that explains the meaning and significance behind the gifts the community has received.



New to the garden, a small shed was built over the summer to house the tools for the Indigenous Gathering Circle. The shed is made of white cedar and will be decorated by the Indigenous Advisory

Committee and the Wellington Place Child Care Centre, as it will also house the tools and wheelbarrows of the children.



In honour of the Summer Solstice on June 21, both Indigenous and non-Indigenous community members and County staff were invited into the Indigenous Gathering Circle to plant sacred medicines, traditional medicines, contemporary medicines, pollinator gardens, and traditional corn. Coordinated by Amber Holmes and supported by WCMA summer student Abby Ferguson over 50 volunteers from a wide range of backgrounds attended and transplanted hundreds of plants in under three hours. Participants observed the sacred protocols and ceremonies necessary for the plantings and were committed to engaging in learning and labour as an act of reconciliation to mark the day, which is also celebrated as National Indigenous Peoples Day. Following the planting day there has been a noticeable increase in wildlife activity within the Indigenous Gathering Circle, including sightings of white-tailed deer, garter snakes, gophers, rabbits, crows, sparrows, robins, Canada geese, and an encouraging increase in Monarch Butterfly sightings. Amber and Abby have conducted initial harvests of some sacred medicines in the Indigenous Gathering Circle, with a majority of the medicines to be harvested before the end of the fall. New medicine plantings are scheduled to take place in the early fall, including plantings of wild strawberries, which are native to the area and edible, and milkweed, which serves to aid in the reestablishment of Monarch Butterfly populations.

On September 15th, the Ontario Works team will host an all staff meeting in the Gathering Circle. Two groups, the Anishnabeg Outreach, and the Southwest Ontario Aboriginal Health Access Centre (SOAHAC), will speak to the group.

The Indigenous Advisory Committee has expressed a desire to host traditional Pow-Wows on site, next to the pavilion and Gathering Circle. To accommodate the size of grass space required, the proposed amphitheatre is being considered for removal from the Wellington Place Mini-Masterplan. An update on the plan will be provided to Committee this fall.

Wellington Place Capital Works Update

A construction schedule is being developed for the rehabilitation of Charles Allan Road, the OPP Collision Lane, the Museum walkways and the road access to the event space next to the Indigenous Gathering Circle. The Museum east parking lot will not be developed this year. As a site for the former tile bed, it will require extra depth excavation and additional Granular B material. This comes with an increased cost from the original \$48,669.58 to \$80,000 plus HST. As such, the parking lot will be deferred to a later date.

Recommendation

That the Wellington Place Update report be received for information and forwarded to County Council.

Respectfully submitted,



Jana Burns
Wellington Place Administrator



COUNTY OF WELLINGTON

COMMITTEE REPORT

To: Chair and Members of the Information, Heritage and Seniors Committee
From: Jana Burns, Wellington Place Administrator
Date: Wednesday, September 13, 2023
Subject: Wellington Place Pavilion

The Pavilion at Wellington Place

Committee members will find updated renderings for the proposed pavilion in the Committee package. Changes since June include:

- The circular outdoor plaza has been reduced by one third to 2,200 square feet, with a central green area included. This reduction in concrete reduces the amount of heat and cost.
- The water feature has been changed from a high concrete wall to low natural armour stone.
- To account for prevailing winds, the west and south walls have been closed, with the south wall incorporating two large six foot doors for access to the rear entrance and road.
- A curvy path has been included to connect the Indigenous Gathering Circle cardinal line leading to the wall opening of the pavilion.
- A kitchenette has been located centrally.
- Two discreet double doors on the west side lead to 600 square feet of storage space for tables, chairs.

The pavilion is surrounded by nature and part of it. Aside from the natural connection with food, the gathering space can be used for business awards events, festivals, children's music events, WCMA Programming, seniors' activities, County events and meetings, WCMA guest speakers on exhibits, workshops, art exhibits, and film screenings. Additional benefits of the structure include:

- A pavilion with access to tables and chairs will provide shelter from the elements and allow for WMCA activities and the harvest of the gardens to take place in safe and accessible ways.
- An annual Traditional Pow Wow is envisioned in the Indigenous Gathering Circle and surrounding area. For this a pavilion is critical for Indigenous vendors and traditional foods.
- Food and craft markets are proximate to the parking lot and offer a way for the community to gather and exchange.
- There are many Indigenous community members who practice traditional crafting as part of their healing journey. Traditional crafting is very important in Indigenous cultures, and Indigenous people engaged in these traditional cultural practices need free, accessible space to sell their wares. A well-constructed pavilion provides shelter from the elements during Indigenous Craft Fairs hosted in the Indigenous Gathering Circle.

- A pavilion outfitted with audio visual equipment and a sink and counter enables events that can teach traditional food preparation, host community meals or youth cooking competitions, for example.

The pavilion suits its natural connection to the Gathering Circle, is complementary to the buildings that surround it, and is designed to be simple, practical, and beautiful. As a place to host the various communities and groups of Wellington County, the pavilion is a place to gather, learn and pay homage to our past and future, under a roof and next to a garden.

Recommendation

That the Wellington Place updated pavilion design be approved to proceed to tender.

Respectfully submitted,

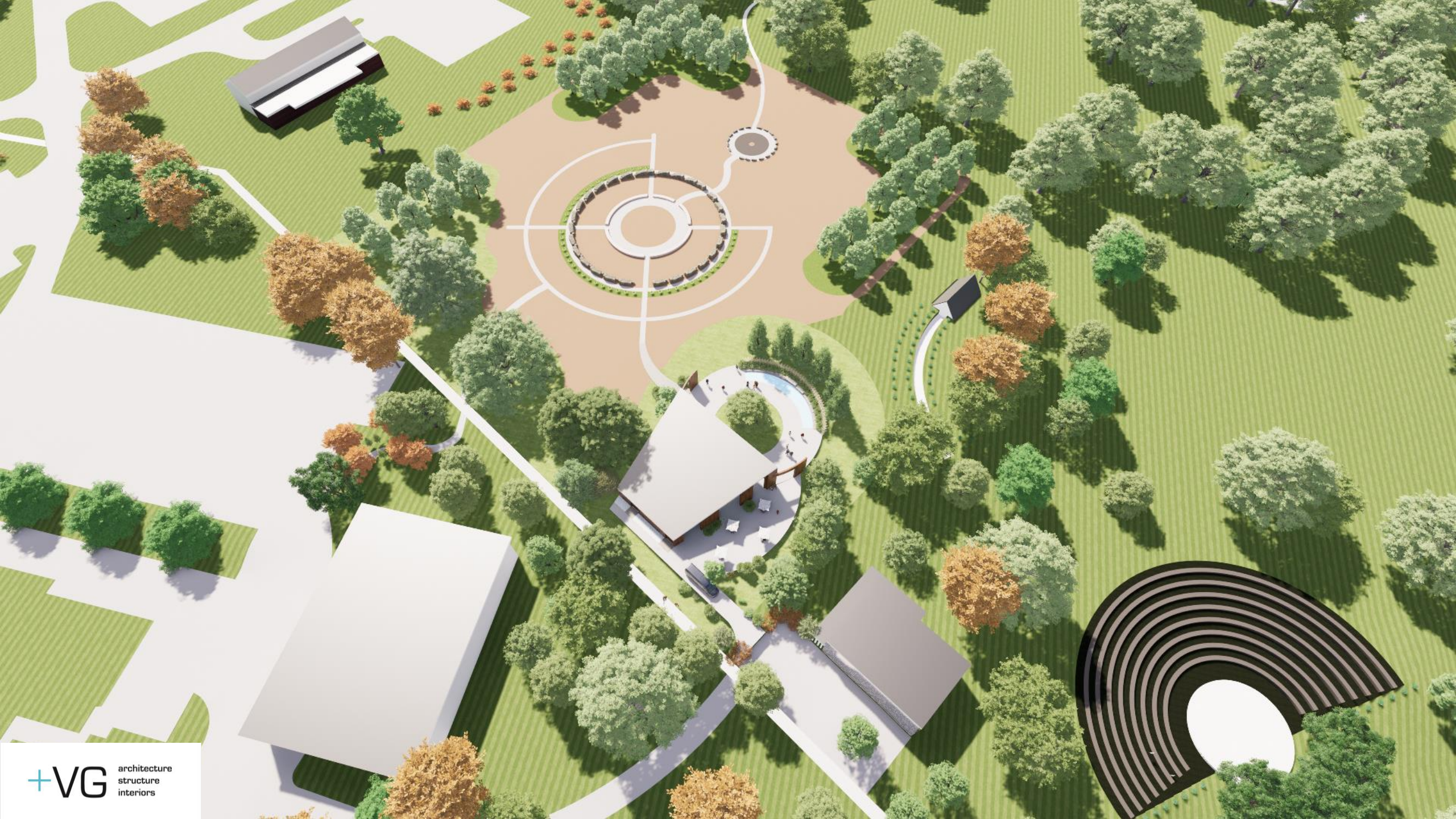
A handwritten signature in black ink, appearing to read 'J. Burns'.

Jana Burns
Wellington Place Administrator

Wellington Place Mini-Master Plan | Phase 2

Pavilion Views | Committee Meeting September 13, 2023











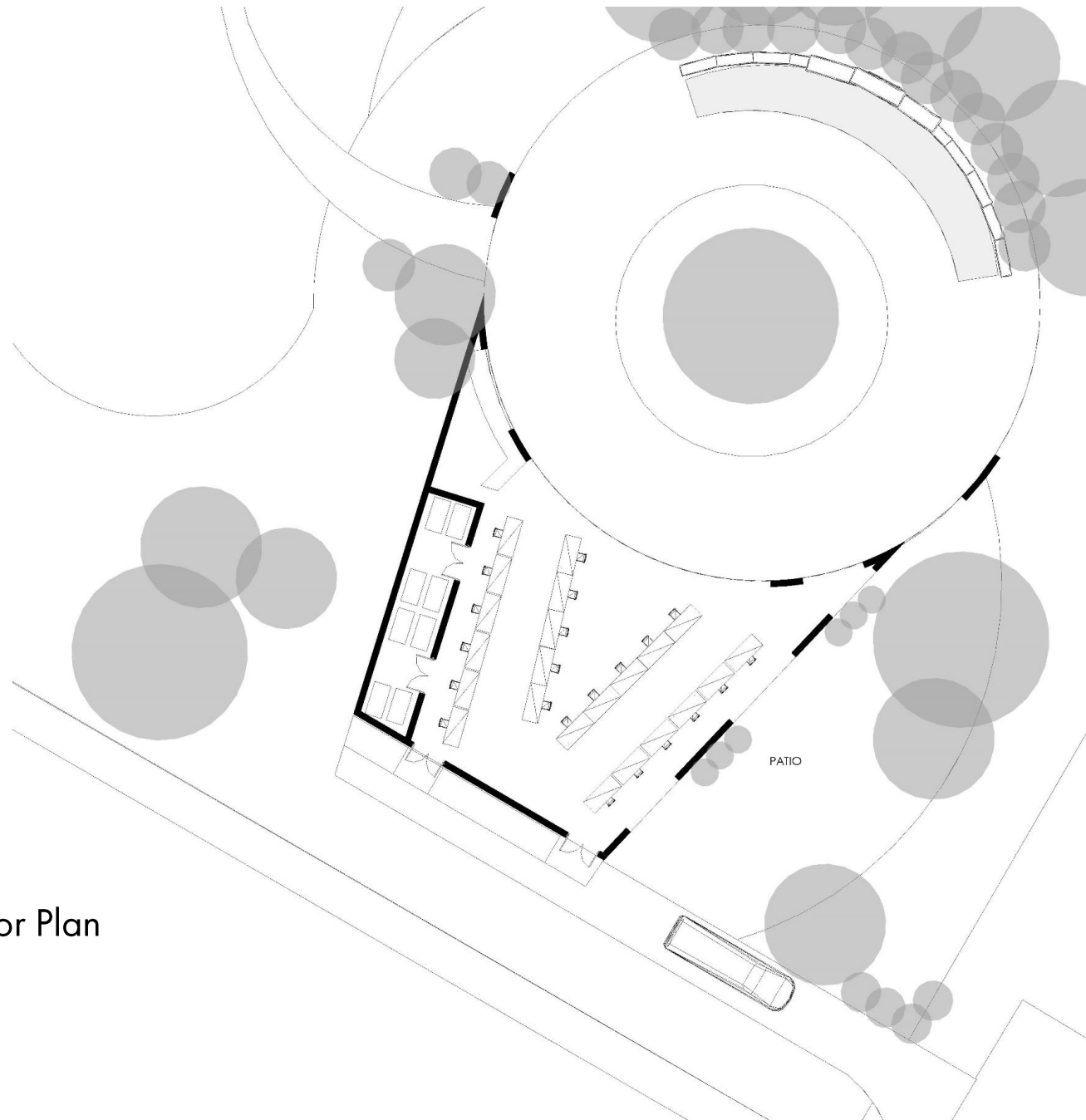












Pavilion Floor Plan



COUNTY OF WELLINGTON

COMMITTEE REPORT

To: Chair and Members of the Library Board
From: Danielle Drimmie, Information Services Librarian
Date: Wednesday, September 13, 2023
Subject: Library Update, Summer 2023

Background: To provide the Library Board with a summary of the 2023 TD Summer Reading Club activities at Wellington County Library.

Summer Reading 2023:

This summer, Wellington County residents of all ages were invited to explore the fun of reading through our annual Summer Reading Club programme. The primary focus of our summer programming is the TD Summer Reading Club, which is geared for children aged 0-13. This centralized programme aims to fill the learning gap that occurs over the summer break for school aged kids. This year, activities were developed around the theme Check This Out including gaming, crafting, STEAM programmes and more. Branches also enjoyed special performers like the science of bubbles with Bubbleology, musical entertainment from Mr. J and the Groovy Gang, and live raptor demonstrations from Wild Ontario. An amazing 4470 patrons attended 367 Summer Reading programmes over the course of the summer. This represents a 52% increase in programme attendance over summer 2022.

After the success of last summer, we kept the same incentive programme of collecting beads and brag tags for books read. TDSRC participants collected one bead for every book read, and one brag tag for every ten books read. Kids collected their beads and tags on chains that could be used as keychains or necklaces. The popularity of these was incredible, which both kids and parents remarked on. The flexibility of these prizes also allows kids to show their creativity and use them in different ways. We had one participant use their tags to make a sign for their bedroom door which was particularly creative.

We were very happy to have three summer students working with us over the course of Summer Reading Club. These students worked out of our Aboyne, Elora, Fergus and Drayton branches which are the busiest branches during Summer Reading Club. They provided invaluable support to library staff by handling SRC registration and reward tasks, preparing programme materials and assisting with activities.

We are very pleased with participation this year, with 2,535 children ages 0-13 registering for our TD Summer Reading Club programme. Together the kids read an amazing 62,508 books. This represents an 18% increase in participation, and a 28% increase in total books read from 2022.

For the seventh year in a row, we also offered a Teen and Adult Summer Reading challenge. Our teen programme saw 140 teens read 2,312 books. Our adult programme had 563 patrons register, collectively reading 2,811 books. The total participants across all age groups represented a nine

percent increase over 2022 numbers. An incredible total of 67,631 books were read this summer representing a 38 percent increase over last year.



A group of kids enjoying a Summer Reading Club programme at the Fergus Branch.



A full house at the Drayton branch for a special animal visit from Party Safari.



Library staff members promoted the Summer Reading Club at events across the County.

Recommendation:

That the Information Services Librarians report for Summer 2023 and the Next Chapter newsletter for September 2023 be received for information.

Respectfully submitted,

Danielle Drimmie

A handwritten signature in black ink that reads "Danielle Drimmie". The signature is written in a cursive, flowing style.

Information Services Librarian

PA Day Programming

Spend your **PA Day** on **Monday, September 18** at your local Wellington Library branch.



- Sew a Monster Workshop**
Elora Branch | 10:00 am - 12:00 pm
- Kindness Rocks**
Harriston Branch | 10:30 - 11:30 am
- At the Movies**
Hillsburgh Branch | 2:00 - 4:00 pm
- Pokemon Crafts**
Fergus Branch | 12:00 - 4:00 pm
- A Brush Full of Colour**
Aboyne Branch | 2:00 - 3:30 pm

Visit

www.wellington.ca/librarycalendar to register and view our complete programme listings.

Culture Days at the Library

Culture Days is an annual national celebration of arts, culture, and creativity.

Take part by joining us for activities at your local branch from September 18 – 23.



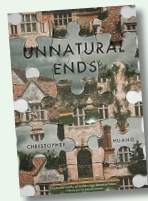
#WellingtonCountyLibrary on social media!

Facebook: @wellingtoncountylibrary
Twitter: @wellingtoncounty Instagram: @WellingtonCounty



Subscribe to digital copies of this newsletter at www.wellington.ca/LibraryNews.

Staff Picks



Unnatural Ends
By Christopher Huang

Sir Lawrence Linwood promised his estate to each of his three children. After he is brutally beaten to death, Alan, Roger, and Caroline return to their childhood home. They learn that his estate is to be divided into three; but the one who solves his murder will inherit everything. This family puts the fun in dysfunctional.

Available in Adult Fiction

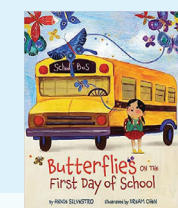
Find more staff picks at www.wellington.ca/Catalogue

The Next Chapter

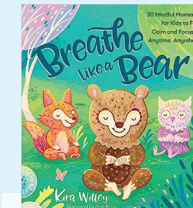
Wellington County Library Newsletter | September 2023

Back to School

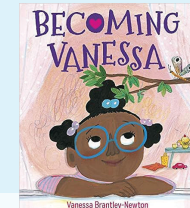
Help your little ones get ready for school with these first day of school books.



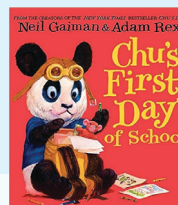
Butterflies on the First Day of School
by Annie Silvestro



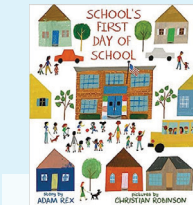
Breathe like a Bear: First Day of School Worries
by Kira Wiley



Becoming Vanessa
by Vanessa Brantley-Newton



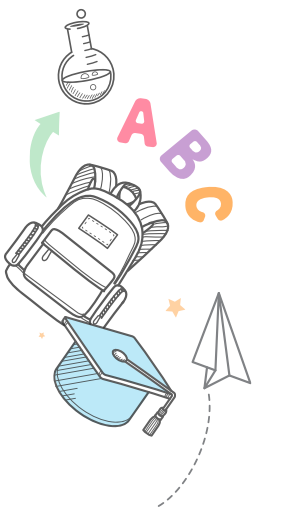
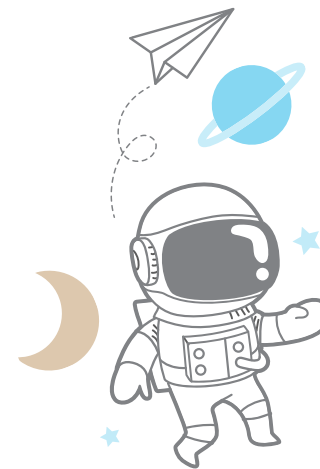
Chu's First Day of School
by Neil Gaiman



School's First Day of School
by Adam Rex



Hurry, Little Tortoise, Time for School!
by Carrie Finison



Service Update

All Wellington County Library branches will be **closed** on Sunday, September 3 and Monday, September 4. Regular hours resume Tuesday, September 5.

”

Autumn is a second spring when every leaf is a flower. - Albert Camus



September Programming

For Kids, Teens and Tweens



Tween Scene:
Basket Weaving

Arthur Branch
Tuesday, September 5
4:00 – 5:00 pm

Creative Kids:
Drawing and Sketching for Tweens

Erin Branch
Thursday, September 9
6:00 – 7:00 pm



Stuffie Sleepover

Marden Branch
Saturday, September 9
10:30 – 11:00 am

Magic the Gathering

Rockwood Branch
Tuesday, September 12
5:30 – 7:00 pm



In Stitches:
Fabric Bookmark

Clifford Branch
Wednesday, September 13
6:00 – 7:00 pm

Teen Café:
Mindfulness

Drayton Branch
Tuesday, September 26
4:00 – 5:00 pm



Do you have a passion for storytelling?

Wellington County students in Grades 4, 5 and 6 are invited to submit original stories of 500 – 750 words to the annual **Olive and Fred Robins Junior Short Story Contest** between **Monday, October 2** and **Tuesday, October 31**. Top stories will be awarded a \$150 cash prize, publication on the library website, and a submission to the Wellington Advertiser for publication. Get started on your stories today in preparation for October.

Visit www.wellington.ca/shortstorycontest for more information and to submit your story.



Take-Out Tech

Did you know that much of the technology you see in our library branches is available to take home? Items you can check out include Nintendo Switches, YouTube and Podcast Kits, and Go Pro cameras.

Visit www.wellington.ca/makerkits for our full list of take-out technology.

Some technology must be signed out to an adult 18 years of age or older. Ask staff for details.

For Adults



Cricut Creations:
Straw Hat Scarecrows

Palmerston Branch
Tuesday, September 5
1:00 – 2:30 pm

Carnegie Café:
All About Artificial Intelligence

Mount Forest Branch
Tuesday, September 12
1:00 – 2:30 pm

Craft and Create:
Watercolour Painting

Puslinch Branch
Tuesday, September 26
1:30 – 3:00 pm

LIBRARY HIGHLIGHTS

Summer 2023



Some of our younger patrons enjoying an Epic Adventures crafting programme at the Mount Forest branch.

We had such positive feedback from parents this summer. One mother told me the library was her two sons favorite place to come in town. Another father asked "What did you do to my daughter? I can't believe how much she is reading!".

- Janine,

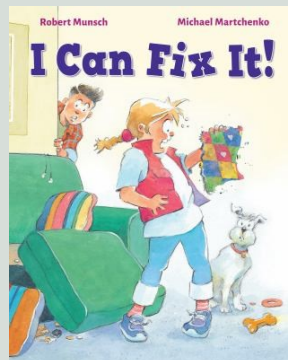
Erin Branch Supervisor

Inside and Outside

957 Board Games circulated this Summer

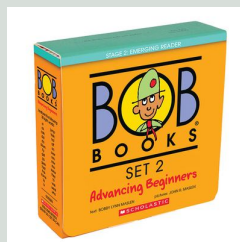
551 Park Passes circulated this Summer

Overdrive circulation hit new all time highs in both July and August



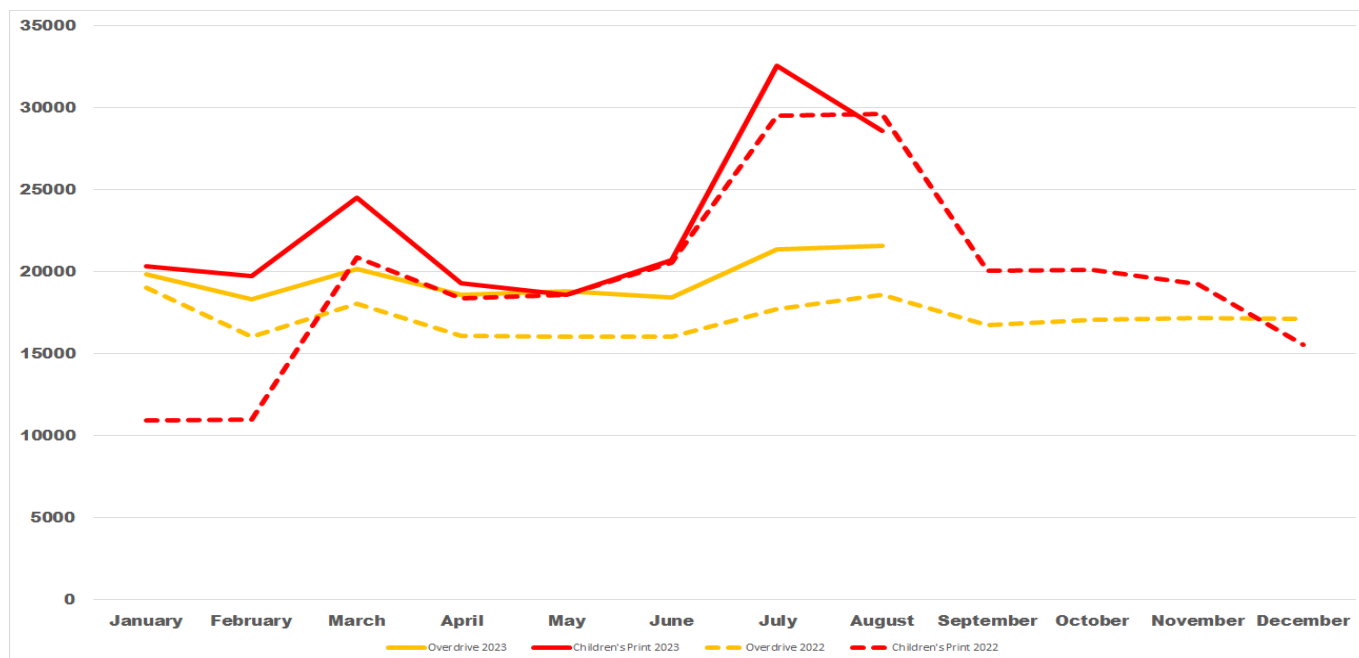
Wellington County kids read 1193 Robert Munsch books this summer!

Top Circulated Beginning Readers

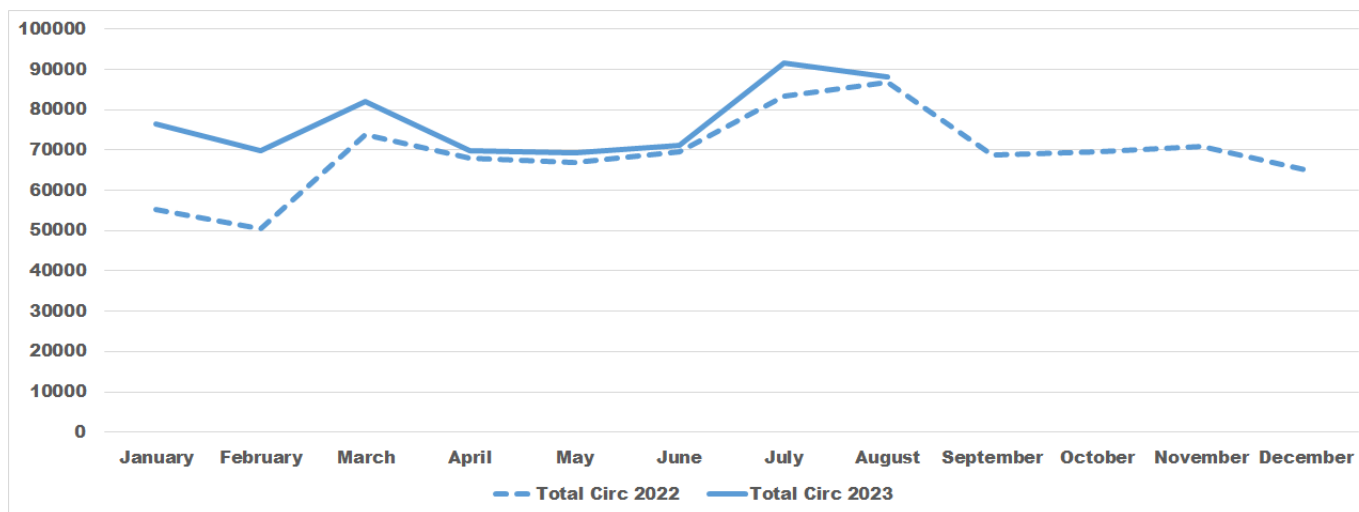


LIBRARY HIGHLIGHTS

Summer 2023 continued



Comparison of children's print and Overdrive circulation in 2022 and 2023



Comparison of total circulation in 2022 and 2023