



The Corporation of the County of Wellington

Information, Heritage and Seniors Committee

Minutes

January 11, 2023
Wellington County Museum and Archives
Aboyne Hall

Present: Warden Andy Lennox
Councillor Mary Lloyd (Chair)
Councillor Diane Ballantyne
Councillor Doug Breen
Councillor Jeff Duncan
Eddie Alton
Walter Trachsel
Julie Wheeler Bryant

Regrets: Lucia Costanzo

Also Present: Councillor David Anderson
Councillor Earl Campbell
Councillor Gregg Davidson
Councillor Steve O'Neill
Paul Sapounzi, Managing Partner, +VG Architects
Deb Westman, Associate, +VG Architects
Vanessa Sanchez, Architectural Technologist, +VG Architects

Staff: Jennifer Adams, County Clerk
Jana Burns, Wellington Place Administrator
Shauna Calder, Manager of Finance
Nicole Cardow, Deputy Clerk
Ken DeHart, County Treasurer
Suzanne Dronick, Administrator, Wellington Terrace
Chanda Gilpin, Assistant Chief Librarian
Rebecca Hine, Chief Librarian
Scott Wilson, CAO

1. Call to Order

At 4:30 pm, the Chair called the meeting to order.

2. Declaration of Pecuniary Interest

There were no declarations of pecuniary interest.

3. Seniors

3.1 2023 Budget - Wellington Terrace

1/1/23

Moved by: Councillor Ballantyne

Seconded by: Councillor Breen

That the 2023 Operating and Capital Budget and 2023-2032 Ten-Year Plan for Wellington Terrace be approved and forwarded to the Administration, Finance and Human Resources Committee.

Carried

3.2 Long-term Care Update

2/1/23

Moved by: Warden Lennox

Seconded by: Councillor Breen

That the Long-term Care Update report be received as information.

Carried

4. Museum and Archives

4.1 2023 Budget - Museum and Archives

3/1/23

Moved by: Councillor Ballantyne

Seconded by: Councillor Duncan

That the 2023 Operating and Capital Budget and 2023-2032 Ten-Year Plan for the Museum and Archives be approved and forwarded to the Administration, Finance and Human Resources Committee.

Carried

4.2 WCMA Update

4/1/23

Moved by: Councillor Duncan

Seconded by: Councillor Ballantyne

That the WCMA Update be received for information and forwarded to County Council.

Carried

4.3 Wellington Place Update November 2022

5/1/23

Moved by: Councillor Breen

Seconded by: Warden Lennox

That the Wellington Place Update report be received for information and forwarded to County Council.

Carried

5. **Recess**

At 5:23 pm, the Committee recessed until 6:02 pm.

6. **Library Board**

Councillor Lloyd welcomed and introduced the new members of the Library Board.

6.1 Election of Chair

Mr. Scott Wilson, CAO conducted the election for 2023-2024.

Walter Trachsel nominated Mary Lloyd, seconded by Eddie Alton.

Councillor Lloyd confirmed her willingness to stand.

Mr. Wilson called for further nominations. There were no further nominations.

Councillor Lloyd was declared Chair for 2023-2034 and assumed the chair.

6.2 Declaration of Pecuniary Interest

There were no declarations of pecuniary interest.

6.3 Erin Village Library Design Presentation - Paul Sapounzi, Managing Partner, +VG Architects

6/1/23

Moved by: Councillor Ballantyne

Seconded by: Councillor Breen

That the Erin Village Library Design Presentation by Paul Sapounzi, Managing Partner, +VG Architects be received for information; and

That the design for the Erin Village Library as presented by +VG Architects be approved for tender.

Carried

6.4 2023 Budget - Library

7/1/23

Moved by: Councillor Duncan

Seconded by: Councillor Breen

That the 2023 Operating and Capital Budget and 2023-2032 Ten-Year Plan for the County Library service be approved and forwarded to the Administration, Finance and Human Resources Committee.

Carried

6.5 Library Lending Kiosks

8/1/23

Moved by: Walter Trachsel

Seconded by: Councillor Duncan

That the Library Board endorses removing the Library Vending Kiosks from the Mount Forest Sports Complex and the Centre Wellington Sportplex and retiring the units from use.

Carried

6.6 Room Rental Statistics

9/1/23

Moved by: Eddie Alton

Seconded by: Walter Trachsel

That the Chief Librarian's report on Wellington County Library's room rental statistics be received for information.

Carried

6.7 Library Update - December 2022

10/1/23

Moved by: Warden Lennox

Seconded by: Councillor Breen

That the Chief Librarian's report for December 2022 be received for information.

Carried

6.8 Library Highlights 2022

11/1/23

Moved by: Walter Trachsel

Seconded by: Councillor Ballantyne

That the Library Highlights 2022 be received for information.

Carried

Library Facts 2022

12/1/23

Moved by: Eddie Alton

Seconded by: Julie Wheeler Bryant

That the Library Facts 2022 be received for information.

Carried

7. Closed Meeting

13/1/23

Moved by: Councillor Ballantyne

Seconded by: Councillor Duncan

That the Information, Heritage and Seniors Committee or Wellington County Library Board move into a closed meeting for the purposes of considering personal matters about an identifiable individual.

Carried

8. Adjournment

At 7:59 pm, the Chair adjourned the meeting until February 15, 2023 or at the call of the Chair.

Mary Lloyd
Chair
Information, Heritage and Seniors Committee



COUNTY OF WELLINGTON

COMMITTEE REPORT

To: Chair and Members of the Information, Heritage and Seniors Committee
From: Suzanne Dronick, Wellington Terrace LTCH Administrator
Date: Wednesday, January 11, 2023
Subject: Long-term Care Update

Background:

On December 23, 2022, the Ministry of Long-term care announced two funding updates. The details are as follows:

COVID-19 Prevention and Containment funding

The Ministry of Long-term care announced \$182.2 million in one-time funding directly to eligible Long-term care (LTC) homes for COVID-19 Prevention and Containment and Personal Protective Equipment (PPE).

As per the Ministry's memo, this funding will flow to homes that have incurred eligible incremental prevention and containment expenses above their programme allocation as of September 30, 2022. No further details on the funding's breakdown and monthly allocation are provided at this time.

All homes are required to submit a report detailing the actual incremental prevention and containment expenditures incurred up until December 31, 2022, as well as the total anticipated expenses that will be incurred for January 1 to March 31, 2023, in the 2022-23 Q1-Q4 COVID-19 Prevention and Containment Expenditures reporting template.

AdvantAge Ontario, our non for profit and municipal LTCH association continues to advocate for ongoing COVID-19 Prevention and Containment funding for all Long-term care homes.

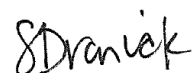
COVID-19 Emergency Measures Funding Policy

As per the new provisions in Ontario a placement coordinator is authorized to admit a hospital alternate level of care (ALC) patient to LTC in a preferred accommodation even if basic has been requested, and the licensee must make the accommodation available as basic accommodation. The licensees will be reimbursed for the cost difference.

Recommendation:

That the Long-term Care Update report be received as information.

Respectfully submitted,

A handwritten signature in black ink, appearing to read "SDronick". The signature is written in a cursive, flowing style.

Suzanne Dronick
Wellington Terrace LTCH Administrator



COUNTY OF WELLINGTON

COMMITTEE REPORT

To: Chair and Members of the Information, Heritage and Seniors Committee
From: Jana Burns, Wellington Place Administrator
Date: Wednesday, January 11, 2023
Subject: **WCMA Update**

Christmas Market

The WCMA was pleased to host its second annual Christmas Market, doubling the number of vendors to 70, hosting 2,600 people on site, and generating \$5,678 in donations. Staff have already convened to discuss ideas for making this year's Market even better.



December General Attendance

Despite the busy time of year, and absent the pandemic, December Museum patron numbers have been increasing.

Year	Patrons
2018	859 – No archives tracking yet
2019	1,298
2020	197
2021	2,232
2022	3,427



WCMA Activities

From October to the end of December, Programming staff fill the calendar with events for the public. Without the poise, organization, and passion of staff Emily Foster and Katie Clarke, such an eventful month would not be possible and certainly not successful. Highlights include:

1. The Pumpkinwalk, an opportunity for the community to show off their pumpkin art skills one last time, while also discarding their gourds. This year approximately 250 carved pumpkins were received for display and the same number of visitors attended the show. The pumpkins were

taken by Solid Waste Services the next day and donated to a local farm, so both citizens and farm animals gained from the event.



2. For decades, Christmas at the Museum has been the busiest school trip season of the year. The pandemic resulted in public-school boards not having been permitted to leave school grounds for the past two years. This restriction was lifted in October and bookings quickly filled. The Museum was again filled with laughing children, parading, and stomping around the Museum as they recreated a Mumming Parade, and the air was again filled with the smells of traditional Mexican Christmas cookies. There have been some challenges so far, buses have been exceedingly unreliable and hard for teachers to book, class numbers are also extremely variable due to illnesses, and WCMA staff sicknesses have also been a challenge, but no events were cancelled, and it was wonderful to see a real Christmas at the Museum again. In total 1,161 students were hosted over two months from 59 different classes.

Archives Update

In November and December 53 members of the public visited the Archives to undertake research in person. Archives staff processed 13 photo reproduction orders, answered 32 phone calls, and responded to 72 emails.

Enquiries from the public included: family history research in East Garafraxa Township; request for copies of records in the collection related to a house history; information on our collections mandate; feedback on photograph descriptions in the collection relating to the Delanty family; looking for local cemetery contact information; location and address of Moorefield Evangelical Church; requesting family obituaries and seeking Minto Township property survey information.

Photo reproductions were requested for use in family histories, personal display, the history of a local rugby football team, display at the County Staff Christmas event, in the Elder Life Programme to reminisce with patients at Groves Memorial Community Hospital and in various Wellington Advertiser articles.

Gallery Opening!

Running from January 12 until March 12, Quiet Moments is a new exhibit, exploring the wonder and beauty of the Elora Gorge through the work of two very different local men, renowned artist Barry McCarthy, and famed Elora photographer John Robert Connon (1862-1931). Separated in time by more than a century, McCarthy and Connon used different techniques to capture the Gorge in all four seasons, offering stunning birds-eye-views and humbling ground-level perspectives that emphasize the scale and raw beauty of this beloved local landmark.



QUIET MOMENTS

JANUARY 12 – MARCH 12, 2023

Discover the beauty of the Elora Gorge through the work of renowned artist Barry McCarthy and photographer John Connon.

**OPENING
RECEPTION:**
Thursday, January 12
7:00 - 9:00 pm

From left: Ph 1385 (detail) by John Connon and Low Levels on the Irvine (detail) by Barry McCarthy.

Wellington County Museum and Archives | 519.846.0916 x 5221 | www.wellington.ca/museum



Summary of 2022 Donations

The WCMA received 68 donations in 2022, consisting of 214 artifacts. The donations included:

- 38 donations by first time donors
- 30 donations by repeat donors
- Included in this distribution were 8 donations from community organizations or transfers from other institutions, member municipalities, or County of Wellington departments

Notable donations include:

- Backboard used at the previous Groves Memorial Community Hospital site on Union Street in Fergus, and items related to the opening of the new hospital location on Frederick Campbell Street.
- First World War uniform, medical kit, and medals of Nursing Sister Alice Eva Hindley, ARRC (1883-1968). Hindley was the daughter of William Hindley and Martha Luttrell, who farmed near Rockwood. She joined the Canadian Army Medical Corps in 1916 and served overseas in England

and France. She was Mentioned in Despatches by Sir Douglas Haig on November 8, 1918, and received the Associate (Second Class) Royal Red Cross (ARRC).

- Material related to the COVID-19 pandemic, including test kits from public health testing sites, PPE, and vaccination promotion material.
- Original sign and shipping crate from Tweddle Chick Hatcheries (Fergus), which was founded in 1925 by Jack Tweddle. The business grew and thrived over the following decades, shipping day-old chicks to farmers across North America and around the world by rail and air. By the 1950s, Tweddle's sold 2 million chicks and 150,000 turkeys per year.
- Two original pressure gauges from the Shand Dam. The Shand Dam was the first dam in Canada built for flood control, water supply, and water quality purposes. Construction began in 1939 and continued despite the outbreak of the Second World War, when many public works projects were halted due to the war effort. The opening of the dam was celebrated on August 7, 1942 with great public fanfare. These pressure gauges remained in use until the mid-1990s when they were replaced with electronic gauges.
- Construction toys that were restored and modified by Gerrit (Gerry) Willem Verwey Jr. (1944-2022) of West Luther Township. Gerry was both in the Netherlands and immigrated to Canada with his parents and siblings, settling in West Luther Township near Monck. Gerry spent his career as a mechanic working on construction equipment. When he retired, he began collecting construction toys, often restoring and modifying them using his extensive knowledge of construction machinery. He amassed a collection of over 350 toys, displaying them at shows in the Alma and Elmira area.
- Shirts and hats worn by the late Arthur (Art) Charles Lee and other members of the Fergus Brass Band. Lee joined the band in 1934 at the age of 13. He remained with the band until his death at age 77, only leaving briefly during the Second World War to serve overseas with the 4th Canadian Field Ambulance. Lee became bandmaster in 1949 and continued for 50 years until his health forced him to step down.
- Items from Wellington County schools, including a Harriston High School ring, Norwell District High School crest, plate, and jacket, and Palmerston Public School pin
- Wedding outfit worn by Anne Price in 1980 when she married Kim Warner. Anne and Kim met while working for the County of Wellington, Anne as a summer student in Child Care and Kim as a case worker in Social Services. Kim Warner then later became Social Services Administrator for the County.
- Items from Hillsburgh Feed and Supplies, which closed in 2022 after nearly 60 years of serving the Erin-Hillsburgh community. The building was formerly home to School Section No. 6 (Erin Township). The WCMA was grateful to receive the original wooden doors and sign from the school, and a weigh scale and other items from the feed business.

Destination Development

In 2022, the WCMA contracted BC Hughes tourism development, management and marketing, to develop a visitor experience plan. Two workshops were held in October and late November, with all staff and key community stakeholders. The discussions examined the current visitor experience, and the resulting report will determine options for the future. Though it was a very light version of destination development, it was helpful for staff to plan future activities in a creative and logical way with an understanding of the essence of place of our site and who will visit. The report is currently in draft and will be provided to Committee next month.

Museum Roof

Nedlaw Roofing estimates the roof construction to be completed on the flat Museum portion of the building by the time Committee is held.

Recommendation:

That the WCMA Update be received for information and forwarded to County Council.

Respectfully submitted,

A handwritten signature in black ink, appearing to read 'Jana Burns', with a stylized, cursive script.

Jana Burns
Wellington Place Administrator



COUNTY OF WELLINGTON

COMMITTEE REPORT

To: Chair and Members of the Information, Heritage and Seniors Committee
From: Jana Burns, Wellington Place Administrator
Date: Wednesday, January 11, 2023
Subject: Wellington Place Update



WCMA staff are grateful to Green Legacy for providing Wellington Place with additional trees. Twenty spruce trees were planted late November along the Museum Trail, near the steps to the Trestle Bridge Trail. Aside from providing shelter from wind, the trees create a magical experience, like the Terrace Trail which loops to the Elora Cataract Trail.

Staff have ordered 20 Sugar Maples for 2023, to fill the gaps and thereby complete the front driveway tree path. At the lovely suggestion of the CAO, several Elm trees will also be planted around the site in the spring.

Indigenous Gathering Circle

The site behind the WCMA parking lot is being transformed by diggers, incorporating granite, sand, topsoil and limestone to create Wellington County's first dedicated Indigenous space. The original water fountain has been removed from the design and will be replaced with three granite rocks and a ceremonial space. A water tap will exist on the edge of this space. Images of the site and the new pathway leading from the parking lot are below.

Almost 400 fruit trees, plants and medicines have been ordered from Whiffletree, to be planted in the Indigenous Gathering Circle in the spring. Staff are grateful for the partnership with Geoff Patterson,

Construction Teacher at the Fergus High School, who is leading the construction of 18 raised planter boxes. The planters will be made of white cedar from a local Amish sawmill and will be a partnership with the High School and the Indigenous Advisory Committee. More than half the planters will be accessible, to accommodate those with mobility issues, seniors, as well as young children.

The project team (IAC and Administrator) met with Terrace staff, to update them on the project and speak to their interest in being involved during and after planting. Terrace staff are grateful for their location at Wellington Place, both for their staff's wellness, and for their residents' enjoyment of their latter years. They would like to use the space for end-of-life reflection, memorial services which could incorporate Indigenous traditions, and they are looking forward to participating in intergenerational programming.

Terrace staff requested accessible paths and spaces and look forward to the three-season pavilion both for their own use, as well as with residents, as there is no concern for infection spreading. As many residents are hard of hearing, they requested a sound system in the pavilion, which was already included in the design.



The IAC has developed a webpage for the project which will soon go live, and which will provide information and sign-up opportunities for those wishing to participate in its development. The group is also applying for funding to acquire a student to assist with coordinating the space.

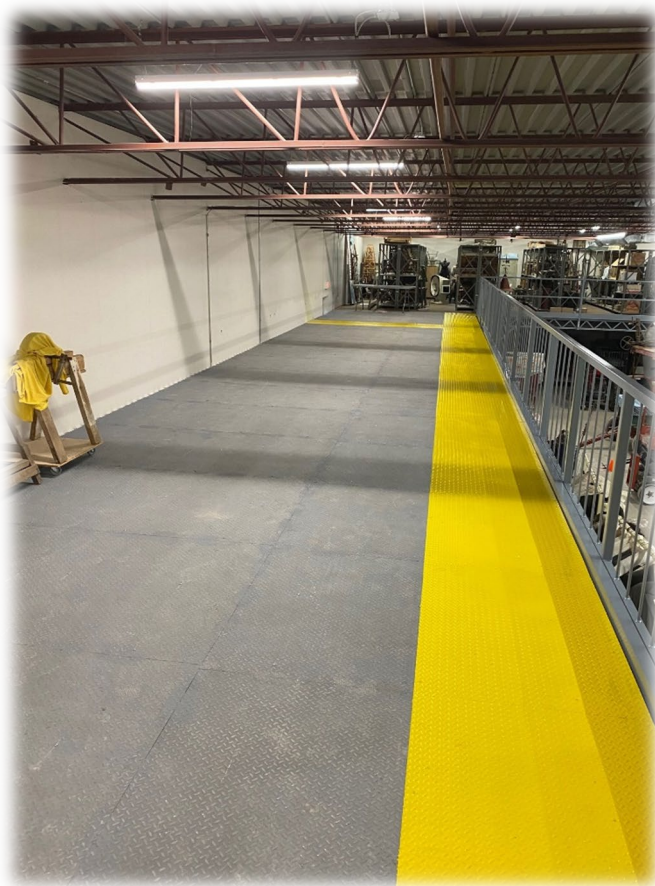
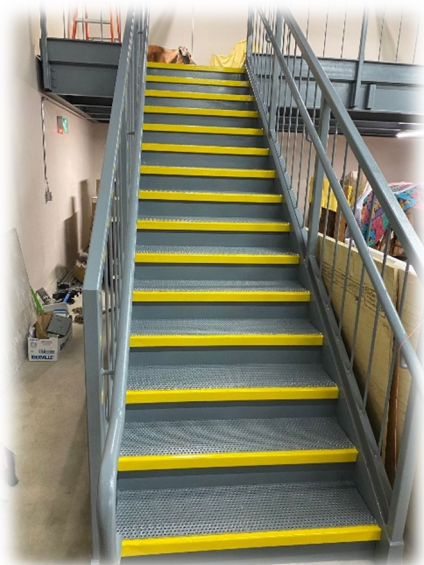
The WCMA Playground

After a delay in receiving supplies, Park n' Play has notified us that the playground equipment has been shipped to their location in Orangeville and will be brought to the WCMA for installation within the next week.



WCMA Artifact Storage Building

Construction on the expanded mezzanine in the artifact storage building is nearing completion. The structure, platform and railing are now complete. Remaining items are humidification and lighting.



Wellington Place Mini-Masterplan

A pavilion is to complete the Indigenous space as part of the original mini-masterplan, and is included in the proposed 2023 budget. The pavilion serves as another welcoming and inclusive public space at Wellington Place, aesthetically appropriate to its surroundings and providing space to nurture the people who gather in it. The pavilion is a three-season space for programming, events, workshops, and celebrations. For the IAC, it is dedicated space for Indigenous makers, space to host festivals and for education. The pavilion design includes 3,150 total square feet within 42 feet by 75 feet of space. The wood structure is simple, the shape and location consider the prevailing winds, and the water feature has been lowered to accommodate the view of the Indigenous space that it accompanies.

Garden Considerations

4.1 Pavilion + Prevailing Winds



Recommendation

That the Wellington Place Update report be received for information and forwarded to County Council.

Respectfully submitted,

A handwritten signature in black ink, appearing to read 'J Burns', with a stylized, cursive script.

Jana Burns
Wellington Place Administrator



COUNTY OF WELLINGTON

COMMITTEE REPORT

To: Chair and Members of the Library Board
From: Rebecca Hine, Chief Librarian
Date: Wednesday, January 11, 2023
Subject: Library Lending Kiosks

Purpose: To provide the Library Board with an overview of library lending kiosks and their use by the community.

Background: In 2018, Wellington County Library purchased two vending kiosks to dispense library material at the Fergus and Mount Forest Arenas. The concept was that these kiosks would act as additional service points for patrons using the recreation facilities, providing they have an active library card with them and know their PIN. Since that time the kiosks have failed to live up to the initial expectations. They are frequently out of order due to ongoing and varied technical issues. An excessive amount of staff time is spent travelling to and from the sportsplex to determine, on a daily basis, if the unit is working and then communicating with the technician in Maryland, USA explaining the issues and working to get them resolved. In addition to the technical issues, when the units are working the circulation statistics are extremely low. The kiosks are underused by our patrons and do not provide the additional circulation that was initially expected when adding two remote service points, separate from our library branches. When comparing the cost of the yearly licensing and service fees as well as the staff time involved with the number of items that are circulated from the kiosks it is very hard to justify the continued maintenance of the units. These lending kiosks do not live up to Wellington County Libraries customer service levels and are a detriment rather than an asset to our library system at this point.

Recommendation:

That the Library Board endorses removing the Library Vending Kiosks from the Mount Forest Sports Complex and the Centre Wellington Sportplex and retiring the units from use.

Respectfully submitted,

A handwritten signature in cursive script, appearing to read 'RHine'.

Rebecca Hine
Chief Librarian



COUNTY OF WELLINGTON

COMMITTEE REPORT

To: Chair and Members of the Library Board
From: Rebecca Hine, Chief Librarian
Date: Wednesday, January 11, 2023
Subject: Room Rental Statistics

Purpose: To provide the Library Board with an overview of room rental statistics from across the library system.

Background: At the December meeting of the Erin Village Building committee members requested information on how frequently the library branches rent out their community rooms. The following chart provides the statistics collected for 2018, 2019 and 2022. Please note that paid room rentals in 2022 didn't start up until April due to covid restrictions.

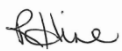
Wellington County Room Rentals 2018-19 and 2022						
		No-fee use through partnerships	Library programmes	Other internal/ County use	Paid rentals	TOTAL
Aboyne	2018	3	153	235	4	395
	2019	80	152	120	6	358
	2022	9	32	21	4	66
Arthur	2018	0	132	6	37	175
	2019	3	129	14	35	181
	2022	9	66	8	21	104
Clifford	2018	2	118	0	3	123
	2019	0	88	1	2	91
	2022	2	36	0	0	38
Drayton	2018	2	262	12	3	279
	2019	13	242	11	3	269
	2022	5	91	0	9	105
Elora	2018	1	122	3	55	181
	2019	1	115	11	51	178
	2022	2	76	2	5	85
Fergus	2018	3	78	81	106	268
	2019	1	46	94	112	253
	2022	0	177	63	21	261

Wellington County Room Rentals 2018-19 and 2022						
		No-fee use through partnerships	Library programmes	Other internal/ County use	Paid rentals	TOTAL
Harriston	2018	9	64	1	41	115
	2019	2	77	1	35	115
	2022	7	71	6	11	95
Hillsburgh - prog room	2018	1	77	10	15	103
	2019	1	150	11	50	212
	2022	0	81	12	23	116
Hillsburgh - kitchen	2018	0	0	5	14	19
	2019	0	4	9	85	98
	2022	0	2	3	12	17
Mount Forest	2018	6	125	24	100	255
	2019	41	123	15	79	258
	2022	5	16	0	20	41
Palmerston	2018	0	271	9	8	288
	2019	5	212	14	4	235
	2022	7	101	3	2	113
Puslinch	2018	4	163	1	12	180
	2019	4	148	4	9	165
	2022	0	104	3	1	108
TOTAL	2018	31	1565	387	398	2381
	2019	151	1486	305	471	2413
	2022	46	853	121	129	1149

Recommendation:

That the Chief Librarian's report on Wellington County Library's room rental statistics be received for information.

Respectfully submitted,



Rebecca Hine
Chief Librarian



COUNTY OF WELLINGTON

COMMITTEE REPORT

To: Chair and Members of the Library Board
From: Rebecca Hine, Chief Librarian
Date: Wednesday, January 11, 2023
Subject: Library Update December 2022

Background: To provide the Library Board with an overview of events and activities from across the library system.

Programming: Holiday programming was successful across all 14 branches. Some highlights include a sewing programme in Arthur in which participants created their own Christmas stockings using the sewing machines. Clifford hosted a decorating event that had patrons join the staff in decorating the the branch for the season. The 12 days of reading was well received again this year. All branches put together packages of books for families to take home as a bundle and read together over the 12 days of Christmas. Harriston hosted a Carnegie Café – evergreen decorations with the Horticultural Society and had 29 participants creating beautiful arrangements. Hillsburgh hosted the Young at Heart Singers for a caroling event and had a great turnout. Marden also hosted a community carol sing with the Bakers Dozen and had over 40 people in attendance.



Community Events and Partnerships: Over 100 people attended the Clifford Christmas in the street event and this was once again a successful outreach programme for the library with new memberships being issued as a direct result. The Aboyne branch has started doing visits with the Wellington Place childcare. The library hosted the infant group in the branch and then went to the centre to do a story time with the toddler group. Both programmes went very well and this will be an ongoing partnership. The Fergus branch has started doing outreach at the Grove Youth Wellness Centre. Angela Legue had 12 teens join her for a Minecraft themed breakout box event which is a great turnout for a teen programme. Branches also continue to work with WDGPH to host small vaccine clinics so that the health unit is able to continue to provide clinics throughout the County.

Language Instruction for Newcomers to Canada: As previously reported to the Board, a LINC class in Harriston has been established in partnership with the UGDSB. It has been scheduled to run on Tuesdays and Thursdays from 10:00-12:00. Harriston Supervisor Rosie Krul will see how this goes in the new year and determine whether this is sufficient or whether the newcomers would also like to continue the conversation circle that she hosted to practice their English in a less formal way.

Looking Ahead: To quote a line from Fergus branch supervisor Kiirstin Maki's monthly report: "2022 has been about staggering back to our feet. 2023 is going to be about remembering how to run"

Recommendation:

That the Chief Librarian's report for December 2022 be received for information.

Respectfully submitted,



Rebecca Hine
Chief Librarian

January Programme Highlights - continued

Resume Help

(Teens, Adults)

Aboyne Branch,
Tuesday, January 17, 2:00 – 4:00 pm

Drop in for informal help with resume styles, advice on what employers are looking for, and tips on how to stand out. With employment coaches from Agilec.



Stuffed Sleepover

(All Ages)

Rockwood Branch,
Friday, January 20, 2:00 – 2:45 pm

Join us for storytime and a craft for you and your stuffie. Leave your stuffie overnight at the branch for a sleepover, and you'll receive an account of all the fun they had at the library when you pick them up!



After School Adventures- Paint Night

(Kids, Teens, Tweens)

Palmerston Branch,
Wednesday, January 25, 4:30 – 5:30 pm

Join us this month for our canvas painting activity. Showcase your own artistic style and make the painting your own.



Three women discover their power when they are brought together by a shared concern over the disappearance of several teenage girls in their quiet beachfront town. Packed with mystery and suspense, this book will appeal to those in search of strong female characters and a bit of the supernatural.

Available in Adult Fiction,
eBook, and audiobook formats.



The Change
By Kristen Miller

Find more staff picks at
www.wellington.ca/catalogue

The Next Chapter

Wellington County Library Newsletter | January 2023

Family Literacy Day

Join Wellington County Library in celebrating **Family Literacy Day on January 27** with displays, programmes, and activities the whole family will enjoy. This annual initiative raises awareness about the importance of engaging in literacy-related activities as a family. Sharing the joy of reading with young readers can dramatically improve a child's literacy skills.



Crafting Pictures with Clay

Fergus, Harriston and Hillsburgh Branches

Thursday, January 26, 4:30 – 5:30 pm

Children's picture book illustrator Barbara Reid will be joining us virtually for a demonstration on how to create a picture with clay!

For grades 1-6, please register.



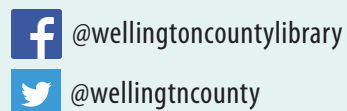
SERVICE UPDATE

HAPPY 2023!

All Wellington County Library
branches will be **CLOSED**
Sunday, January 1 –
Monday, January 2.



#WellingtonCountyLibrary on social media!



™ Official Mark of The Corporation
of the County of Wellington

Alternate formats available upon request.



Subscribe to digital copies of this newsletter at www.wellington.ca/LibraryNews.

”

What good is the warmth of summer, without
the cold of winter to give it sweetness.
- John Steinbeck



January Programme Highlights

Check out the programming on offer at your local Wellington County Library branch this month.

Make and Take- Minions Craft

(All Ages)

Drayton Branch, Wednesday, January 4 – Saturday, January 7.

Drop by during branch hours and get creative with provided art and craft supplies. Adult accompaniment is required for children under 8 years.

Hooks and Needles

(Adults)

Marden Branch, Friday, January 6, 2:00 – 3:00 pm

Bring your own project and join others for knitting, cross-stitch, and other fibre arts.



At the Movies- Abominable

(All Ages)

Clifford Branch, Saturday, January 7, 12:00 - 1:40 pm

Join us for a showing of Abominable. Bring a blanket and we'll provide the popcorn. Running time 97 minutes, rated G.

Browse all of our programmes and register at www.wellington.ca/librarycalendar

Teen Café

(Teens)

Mount Forest Branch, Monday, January 9, 3:00 – 4:30 pm

Come hang out and play some PS4 games with us. Bring your controller (if you have one) and your friends!

Cricut Creations- Learn the Basics

(Twins, Teens, Adults)

Erin Branch, Tuesday, January 10, 6:30 – 7:30 pm

Join us to learn all the amazing ways you can use a Cricut electronic cutting machine. All materials provided.

Ancestry Library Edition Workshop

(Adults)

Puslinch Branch, Tuesday, January 10, 2:00 - 3:00 pm



Learn the basics of navigating Ancestry Library Edition to get started on your genealogy research.

Book Club- On the Grand

(Adults)

Fergus Branch, Wednesday, January 11, 1:00 – 2:00 pm

Meet with members of your community and join our discussion of books and ideas. Speak to library staff for details and book titles.



Get Reading with the

LIBBY APP

Access titles from home this winter without leaving the couch. It's easy to borrow eBooks, audiobooks, and magazines from your local library through the Libby app. Instantly read the latest issue of your favourite magazine, get lost in a cozy mystery, or explore the world through a travel memoir.

Browse the full selection of digital material through our online catalogue at www.wellington.ca/Catalogue





Best Books of 2022

Check out one of Erin Supervisor Janine's best reads of 2022.



Foster
by Claire Keegan



Remarkably Bright Creatures
by Shelby Van Pelt



Happy-Go-Lucky
by David Sedaris



Run Towards the Danger
by Sarah Polley



What Strange Paradise
by Omar El Akkad



Empire of Pain
by Patrick Radden Keefe



When Women Were Dragons
by Kelly Barnhill



Binge: 60 stories to make your brain feel different
by Douglas Coupland



Fight Night
by Miriam Toews



Young Mungo
by Douglas Stuart

Explore more top picks from Library staff at www.wellington.ca/catalogue

Story Time

(Babies, Toddlers, Preschoolers)

Elora Branch, Wednesday, January 11, 10:30 – 11:00 am

Share stories, songs, rhymes, and activities aimed at developing your child's early literacy skills. Adult accompaniment is required.

Saturday Stories

(Preschoolers, School Age)

Arthur Branch, Saturday, January 14, 10:30 - 11:15 am

Join us on weekends to share stories, crafts, games and other fun activities.



Library Facts from 2022



Total Circulation
848,589



Programmes
Offered
2,168

Programme
Participation
40,791



Batteries Collected
3,442 kg



New Items
Purchased
27,985



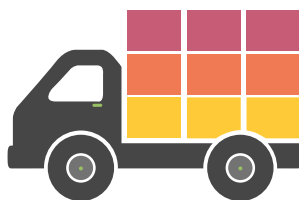
eBooks Purchased
2,812
for Wellington County
Library Patrons



eBook Circulation
205,792



New Patrons
Registered
4,159



Items Moved by
Library Courier
325,752



Curbside Pickups
12,257
*Jan. - Feb. only