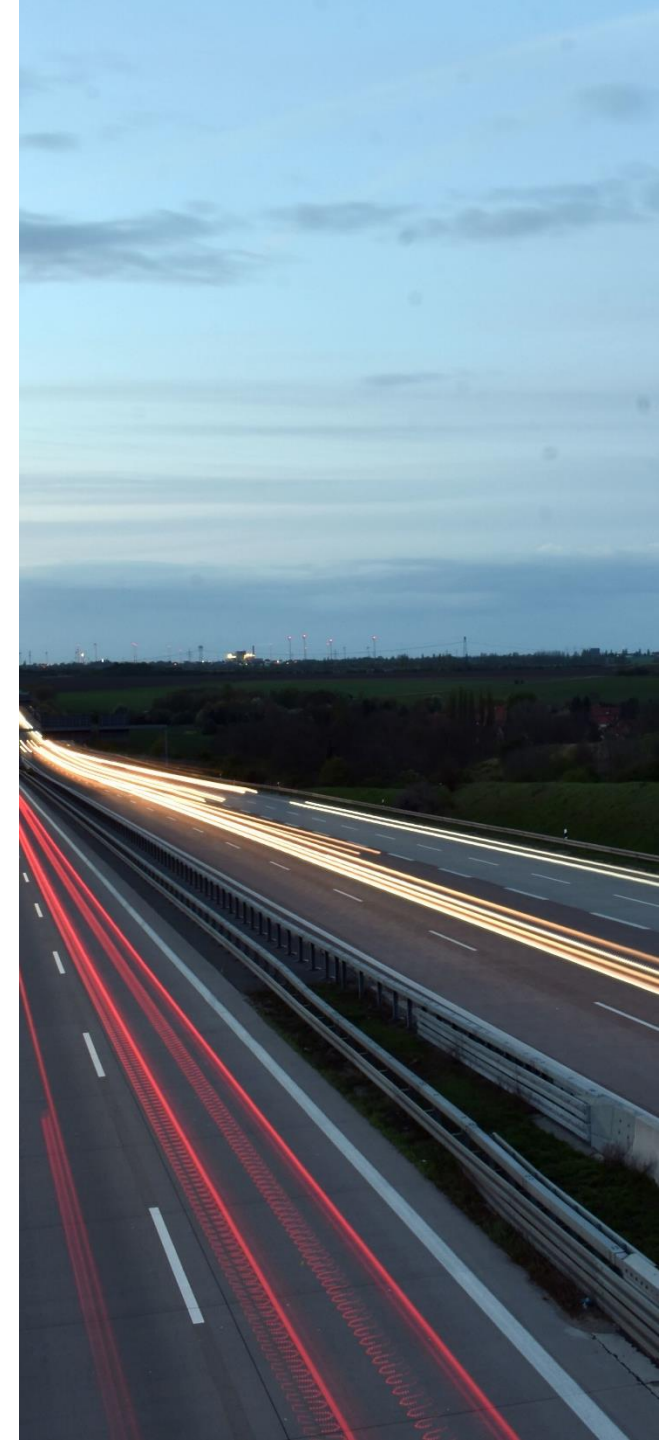


Highway 6 Hanlon Expressway Midblock Interchange

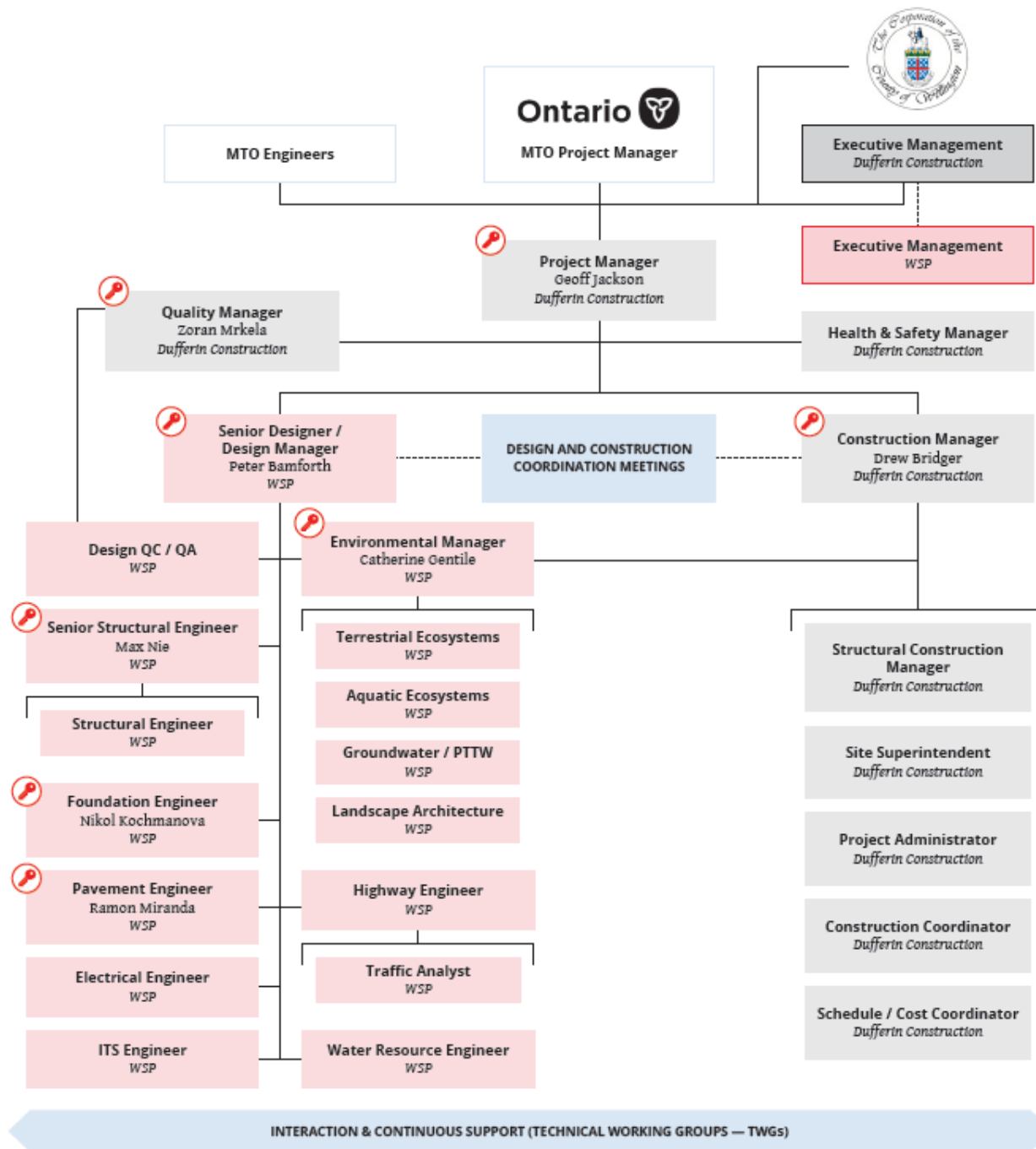
Detail Design-Build and Class Environmental
Assessment (DB Contract: 2021-3004)

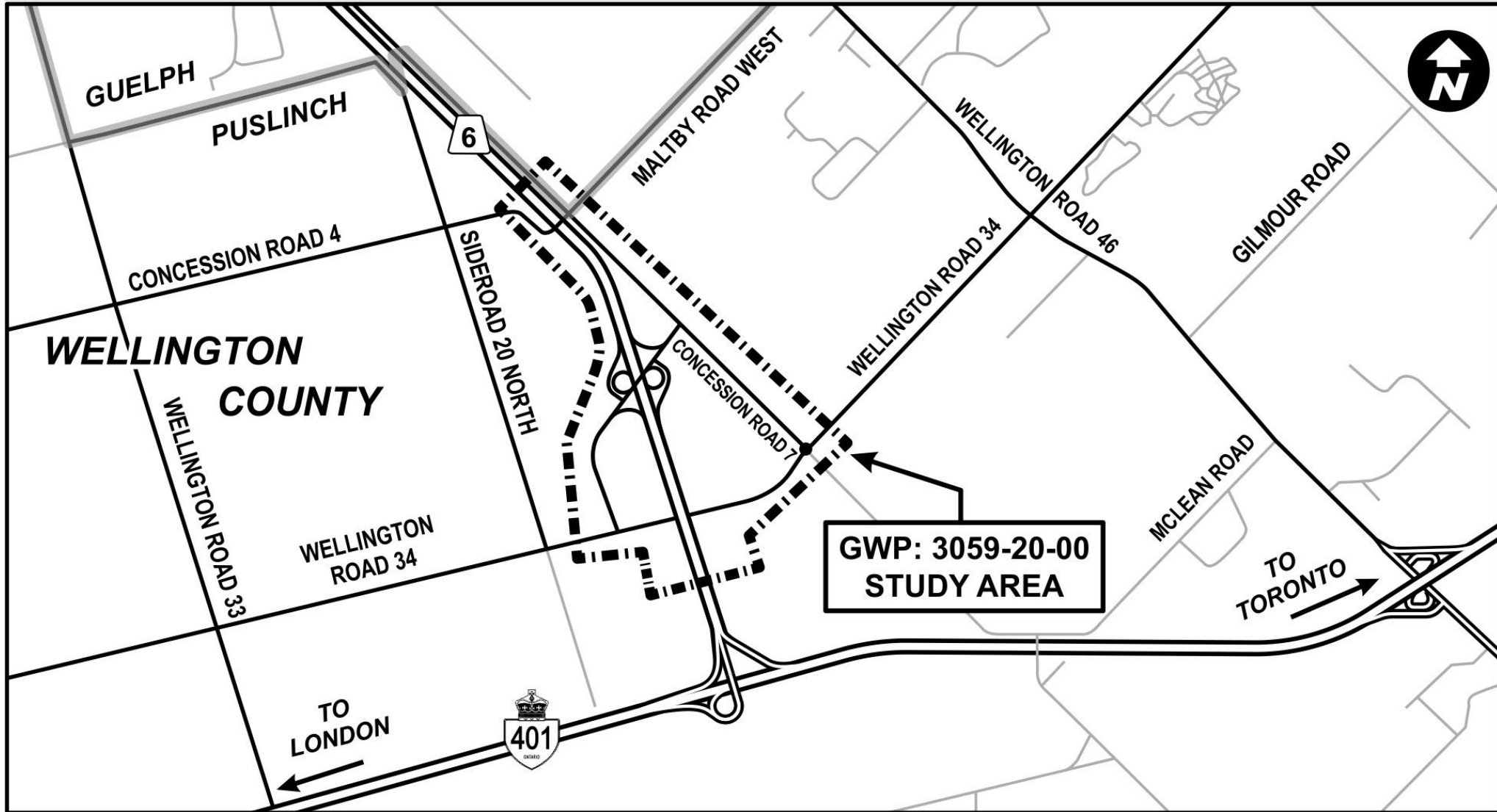
Wellington County – Roads Committee Presentation
September 13, 2022



Agenda

- Project Team Introduction
- Key Plan
- Phase 2 (Midblock Interchange) Project Overview
- Utilities
- EA Process & Consultation
- Next Steps
- Construction Schedule
- Traffic Management (Detour Routes)
- Open Discussion





Project Overview

The Highways 6 and 401 Improvements between Hamilton and Guelph (G.W.P. 3042-14-00) are being undertaken by the Ontario Ministry of Transportation (MTO) in a phased approach:

- Phase 1, was completed in 2020 and included the replacement of the Concession Road 7 Bridge over Highway 401.
- Phase 2 includes the Class EA, detail design and construction of the **Highway 6 / Hanlon Expressway Midblock Interchange**, just north of Highway 401 (The Project, G.W.P. 3059-20-00). The Design-Build contract for Phase 2 was awarded to Dufferin Construction in 2022. WSP Canada Inc. has been acquired as the Designer for the project.
- The Project includes:
 - A new interchange on the Hanlon Expressway, including a new road to connect the new interchange to Concession Road 7 and to Wellington Road 34;
 - Removal of the signalized intersection at Wellington Road 34 and the addition of a new bridge over the Hanlon Expressway for Wellington Road 34 traffic;
 - Reconstruction of Concession Road 7 between Wellington Road 34 and Maltby Road;
 - Closure of the Maltby Road / Concession Road 4 intersection with the Hanlon Expressway;
 - A new roundabout at the Wellington Road 34 and Concession Road 7 intersection;
 - Installation of new overhead sign structures, traffic signals and partial illumination;
 - Emergency and maintenance vehicle turnarounds along the Hanlon Expressway (South of Wellington Road 34 and Maltby Road - utilizing existing median crossing);
 - Drainage improvements;
 - Relocation of utilities;
 - Foundation Engineering;
 - Pavement Design; and,
 - ATMS Design.

Utilities

- The following utilities are located along Wellington Road 34 and Concession Road 7:
 - ✓ Hydro One (Transmission)
 - ✓ Hydro One (Distribution)
 - ✓ Enbridge
 - ✓ Bell
 - ✓ Rogers Communications
 - ✓ Telus
 - ✓ Alectra
- Utility coordination and meetings are currently underway

EA Process

- Group 'A' project under the MTO's *Class Environmental Assessment (EA) for Provincial Transportation Facilities (2000)*
- 2 Design and Construction Reports (DCRs) will be prepared to accelerate the approval and construction of certain project elements.
- The DCRs will document:
 - ✓ Study process
 - ✓ Consultation undertaken
 - ✓ Project design
 - ✓ Environmental effects and associated mitigation measures incorporated into the design
- DCR notification letters will be published in local newspapers and distributed to the project contact list to provide notification of the public comment period and identify where the DCR can be viewed on the project website.

Consultation Updates

- Notice of Study Update letters distributed between April 19-25, 2022
- Notice of Study Completion (DCR #1) letters to be distributed in September 2022
- Ontario Government Notices published in the following newspapers:
 - ✓ Turtle Island News
 - ✓ Two Row Times
 - ✓ Guelph Mercury Tribune
 - ✓ Wellington Advisor
- Project website live: www.highway6midblock.ca/
 - DCR #1 will be available under the Reports tab for a 30-day public review: www.highway6midblock.ca/reports/
 - Comments can be submitted via the Project Team email address or the Contact Us page on the website
- Project Team email: ProjectTeam@Highway6midblock.ca

Next Steps



**Field Investigations
Completed**

**DCR #1 Published for
Public Review &
Comment**

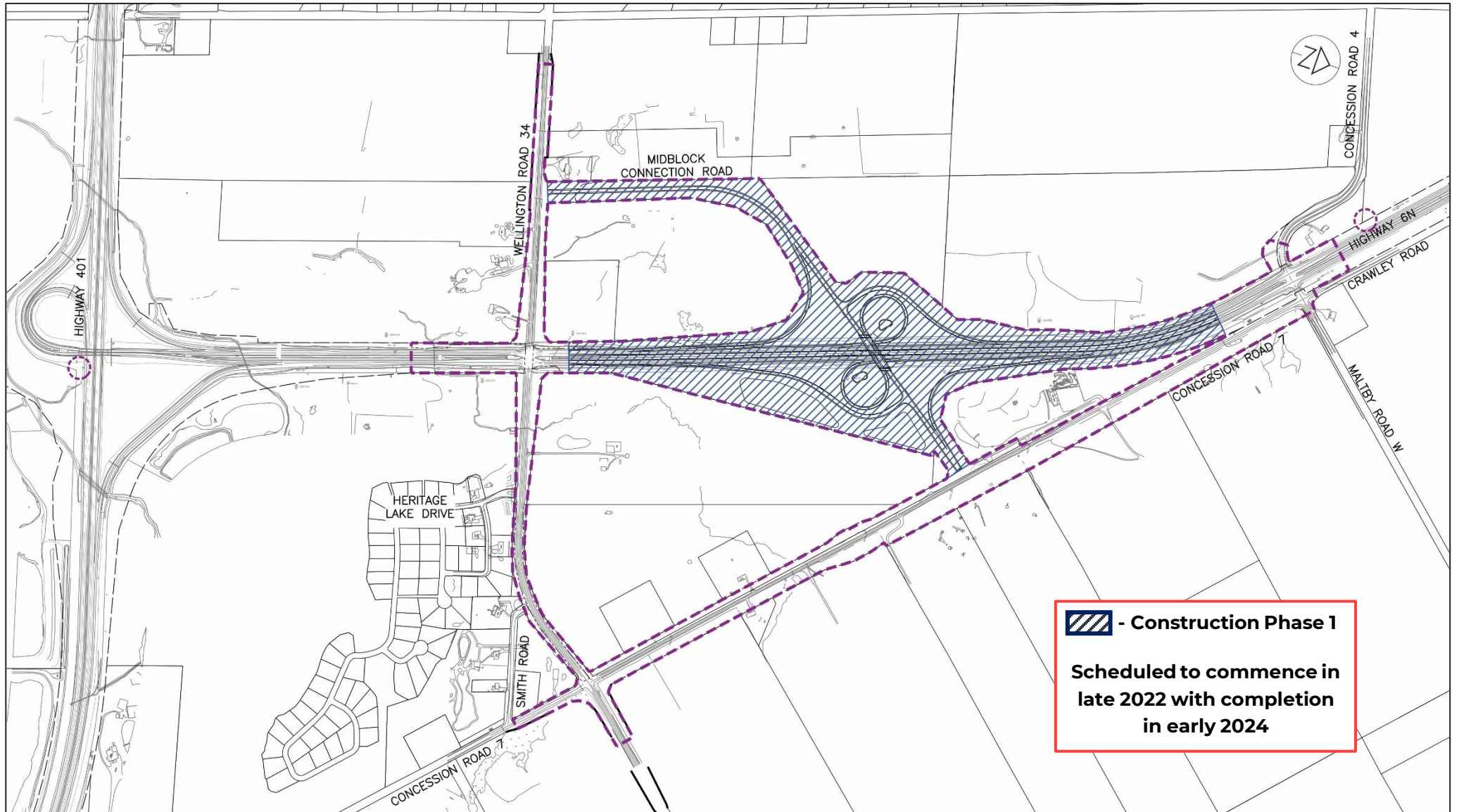
**DCR #2 (Remaining
Works) Published for
Public Review &
Comment**

**Environmental
Clearance of
Remaining Works**

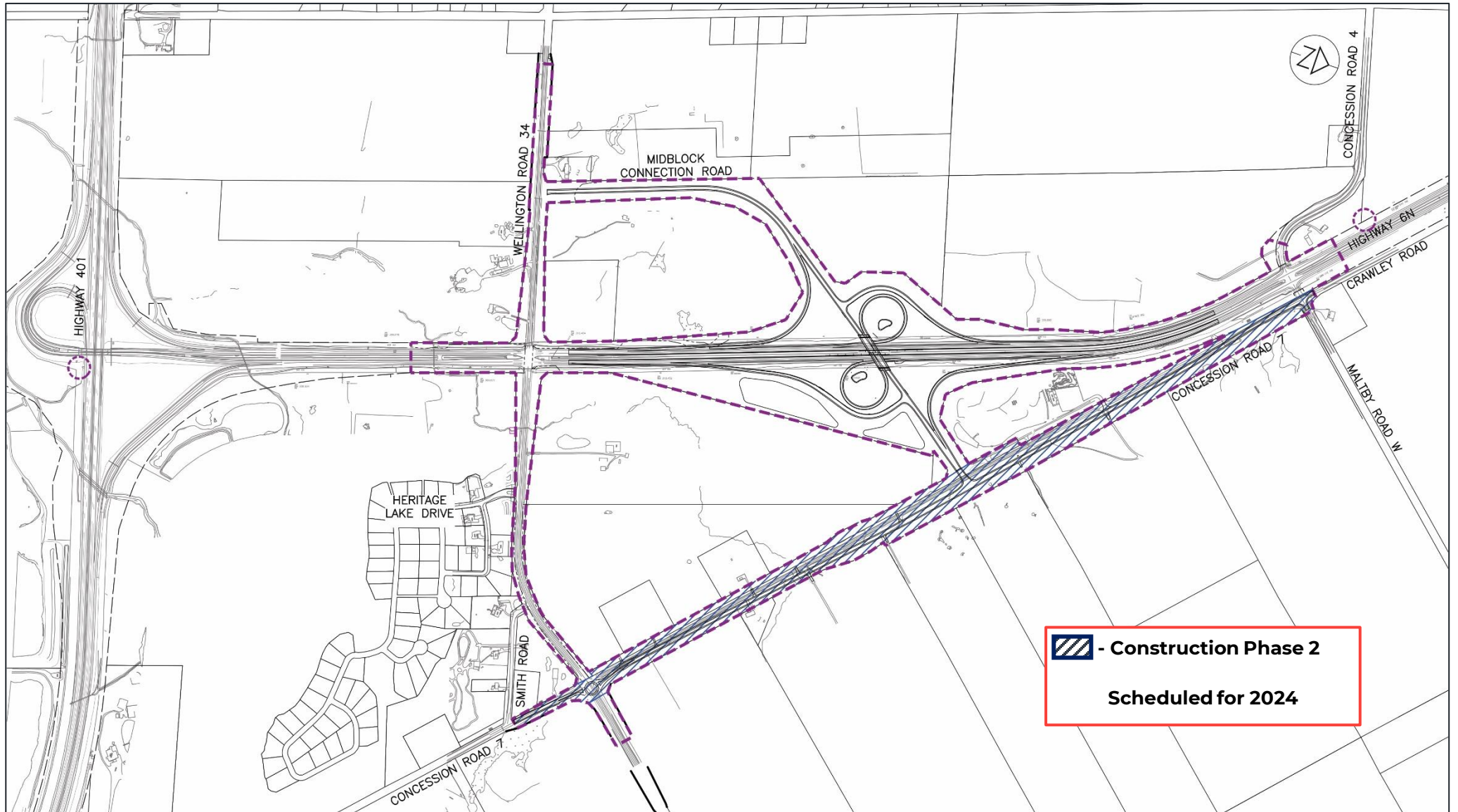
**Environmental
Clearance of Early
Works**

**Early Works
Construction Begins**

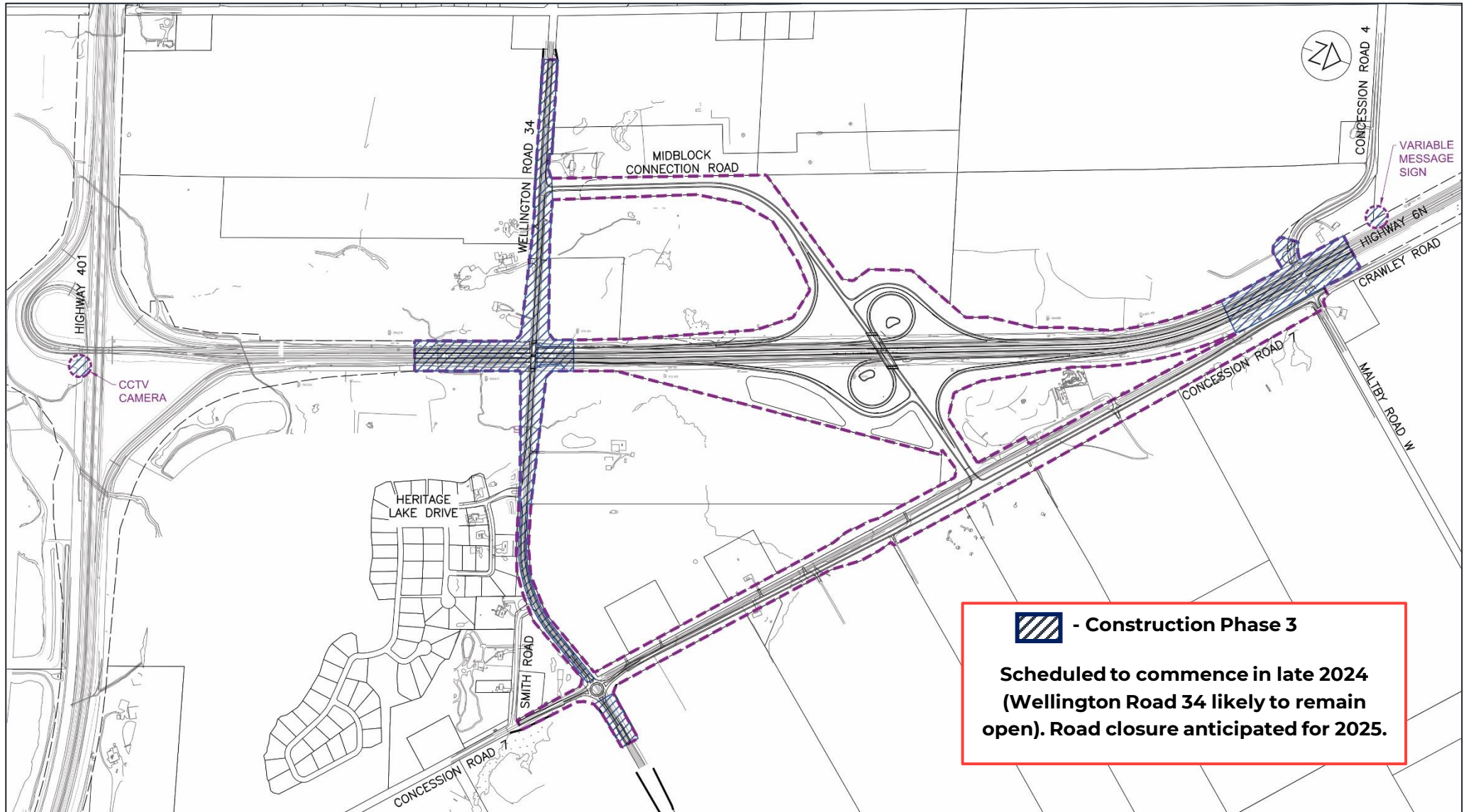
Construction Schedule



Construction Schedule

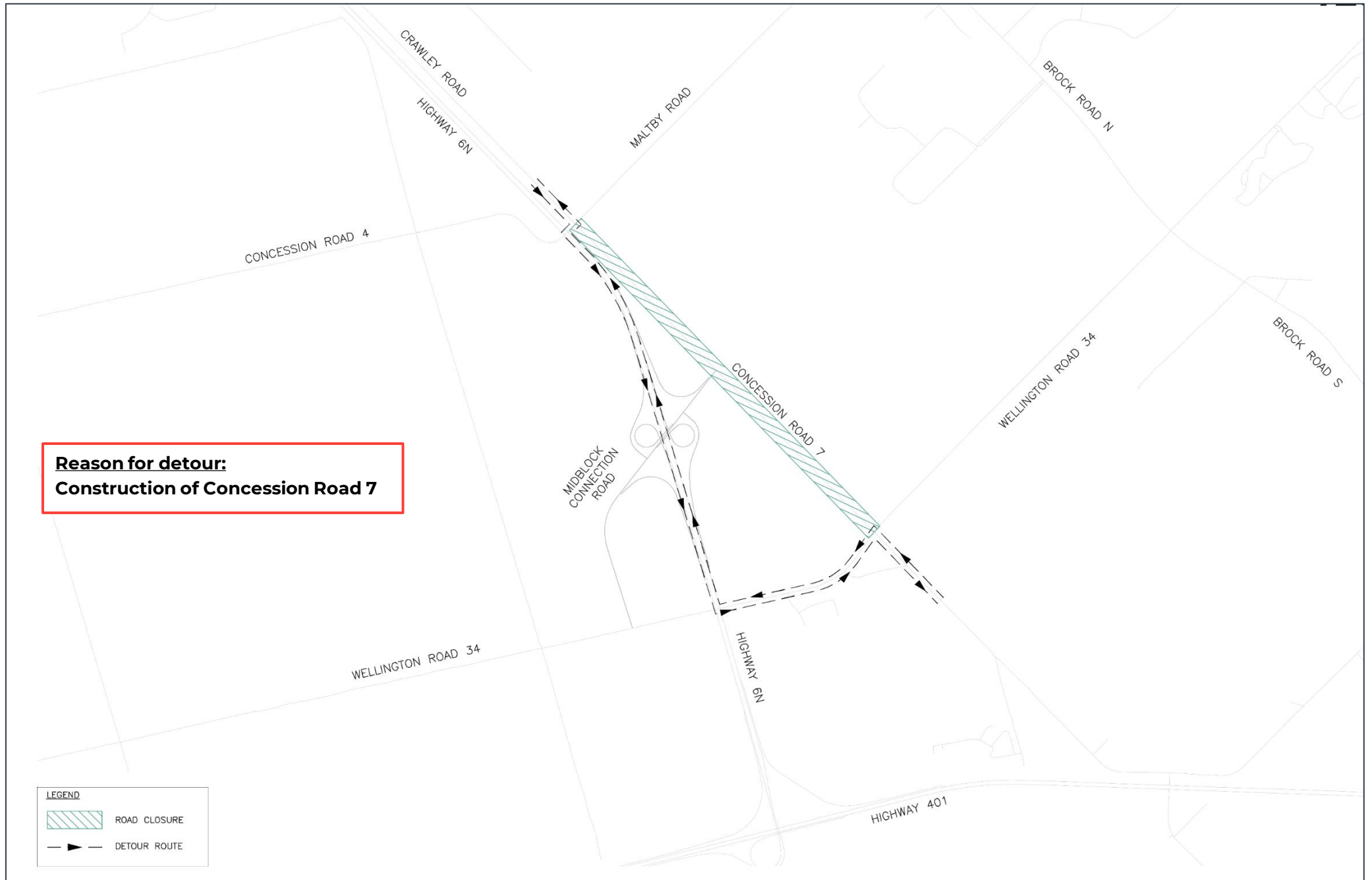


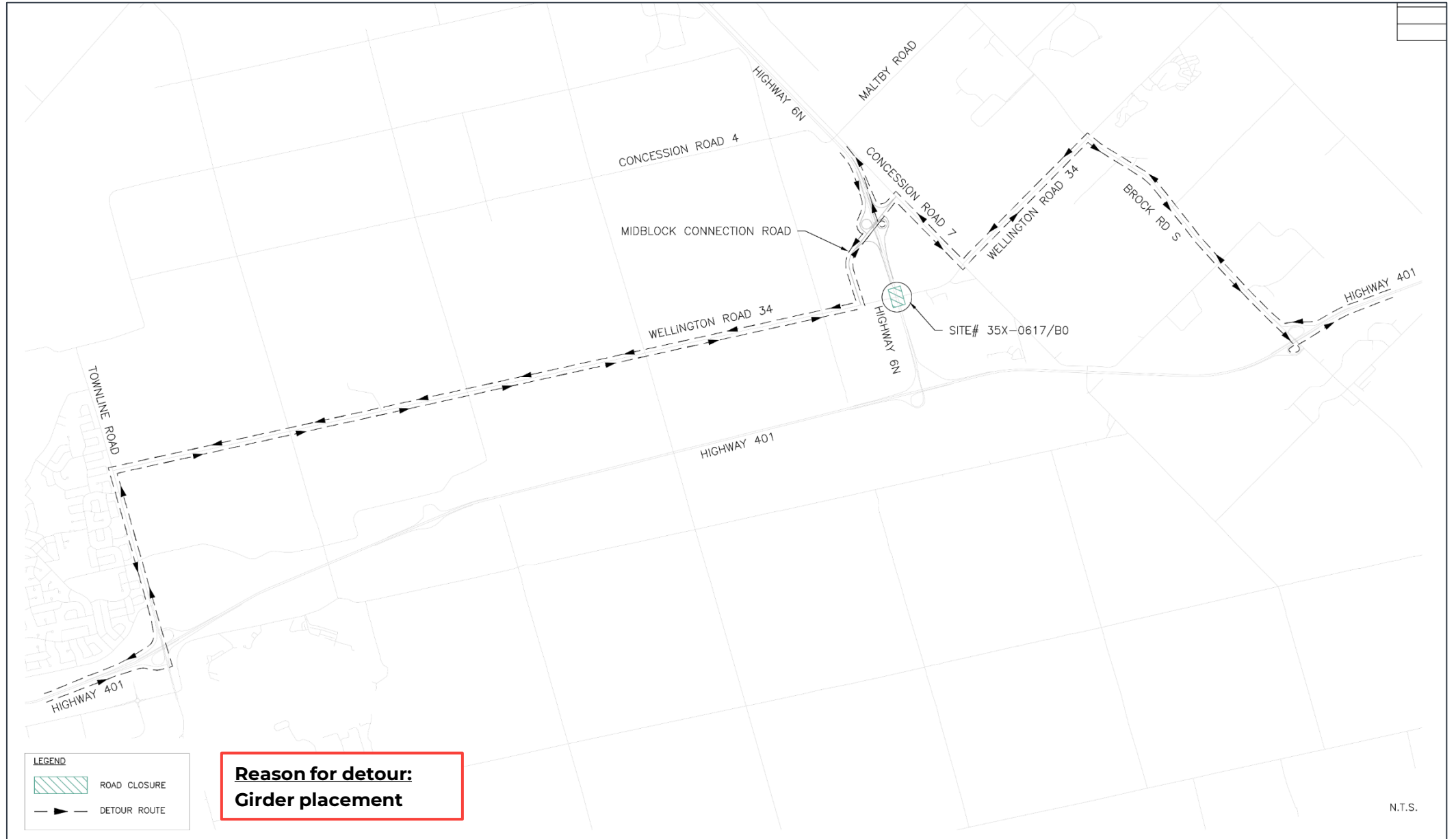
Construction Schedule

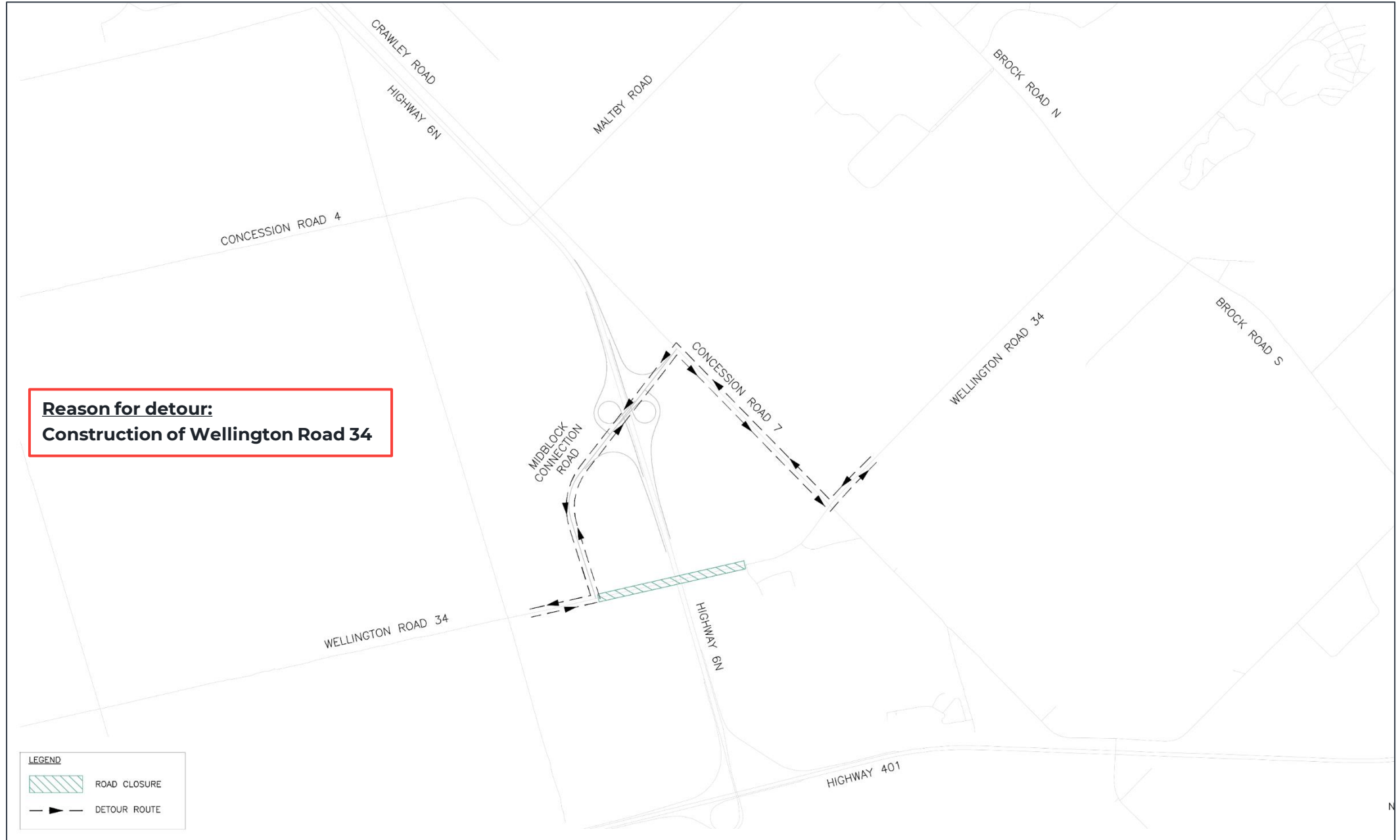


Traffic Management











Questions?



Thank you