

# Safe Communities Wellington County

2021 A Year in Review & Next Steps for 2022

# Executive

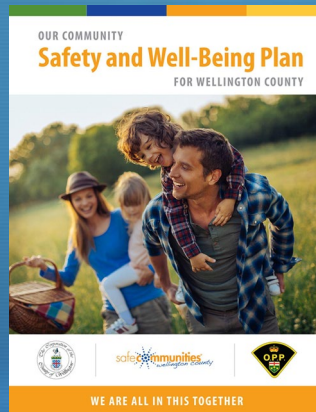
## Co-Chairs

OPP Inspector (Acting), Stephen Thomas  
Minto Safe Communities, Angelle Eybel

## Executive Members

Chief Stephen Dewar, Guelph Wellington Paramedic Services,  
Campbell Cork, County of Wellington Counsellor,  
Anna Vanderlaan, Wellington Dufferin Guelph Public Health, Paul  
Richardson, OPP Inspector, Kate Kobbes, Wellington Healthcare Alliance

# 2021



# 2022



# Objectives

1. Launch Presentation Series with The Grove Hubs
2. Priority Setting for 2022 - 2025
3. Continue to Develop and implement evidence -based activities
4. Work with municipalities to receive their reports for 2022
5. Work closely with Action Groups and help with direction
6. Collaborate with Partners & Create new Action Groups
7. Coordinate virtual and face to face events & campaigns throughout the year

# Highlights



# THANK YOU!