

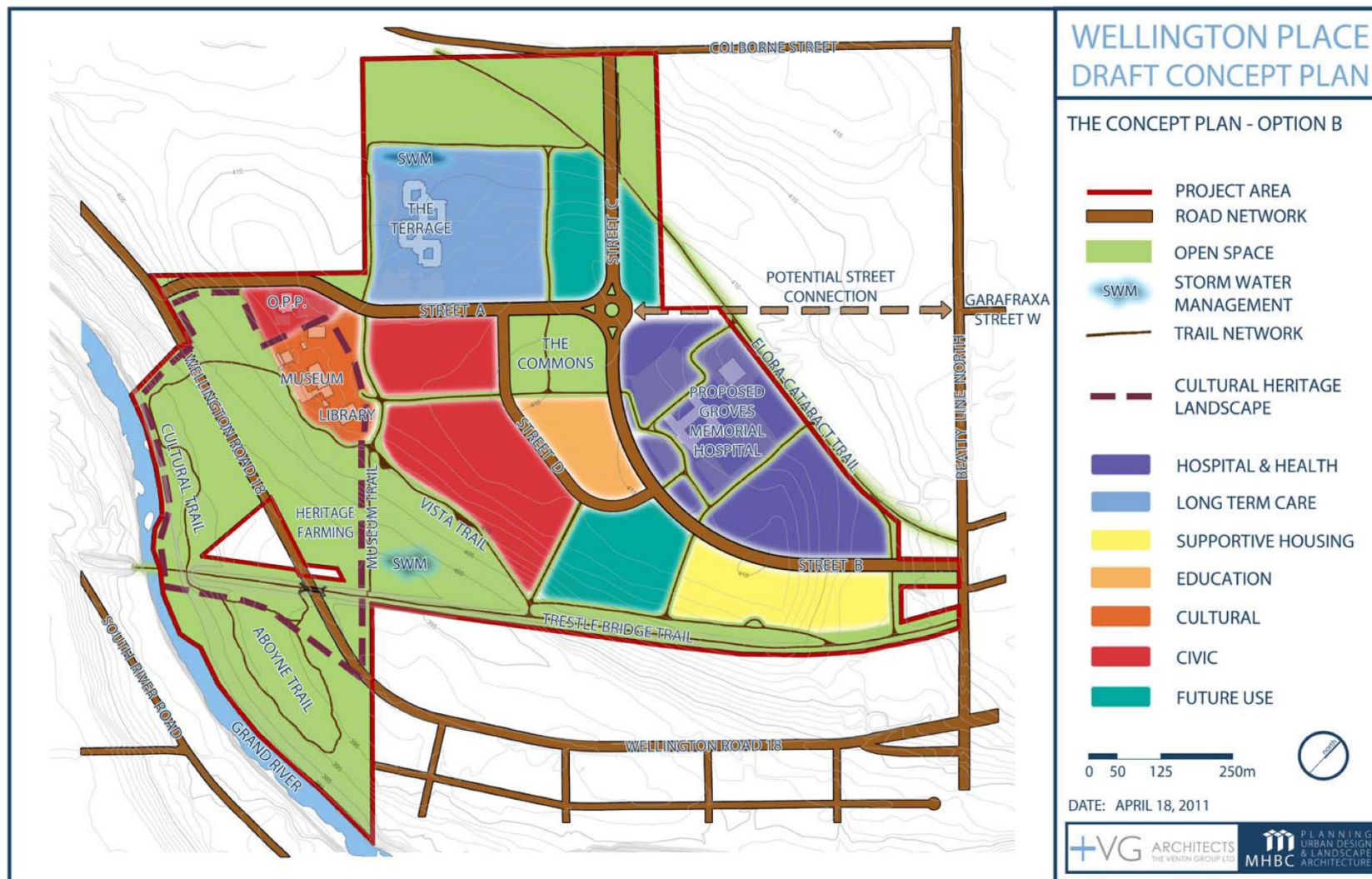
Wellington Place Mini-Master Plan

Presentation to Council

November 25, 2021

Acknowledgements

The staff of the County of Wellington greatly value the incredible potential of Wellington Place for its residents, staff and visitors. Staff also recognize the importance of managing the steps needed to implement its development. We thank Jana Burns and her County colleagues for the depth of input received to date to bring this compelling story to life.



The 'mini-master plan' is founded in the Wellington Place Concept Plan as ratified in the Official Plan, Amendment Number 79.

Project Modelling

+VG retained a local company to scan the Wellington Place site and the museum building. The result is an interactive model used to build ideas, make changes, and evolve the future plan.

The following short video shows the process of laser scanning and 3D modelling of Wellington Place.



1. Museum

- 1a. New Entrance, Lighting + Signage
- 1b. East Parking Lot + Pathways
- 1c. Barn Paddock + Playground + Stage
- 1d. Interior Modifications

2. Community Engagement

- 2a. Entrance Pavilion, Patio Terrace + Water Feature
- 2b. The Indigenous Medicine Garden
- 2c. The Sacred Circle
- 2d. Root Cellar

3. Artifact Storage, Display, Bike Repair + Water Fill Station

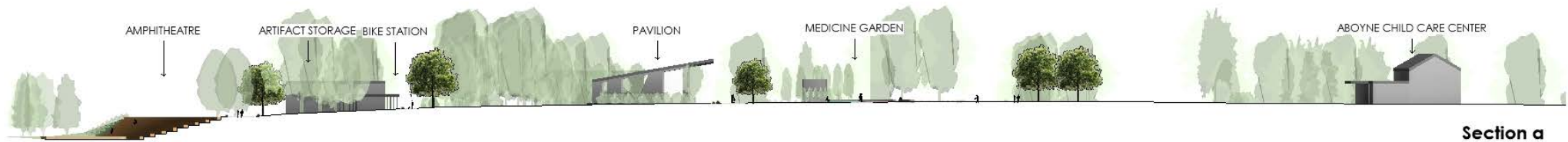
4. Amphitheatre

5. Commons

6. Meadow

- 6a. Engagement Area
- 6b. Food Forest





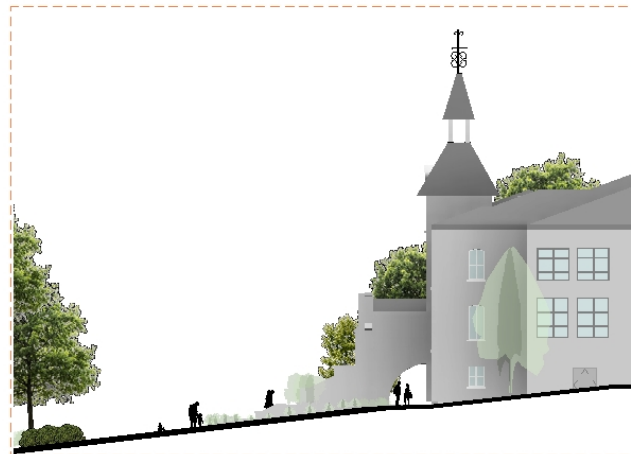
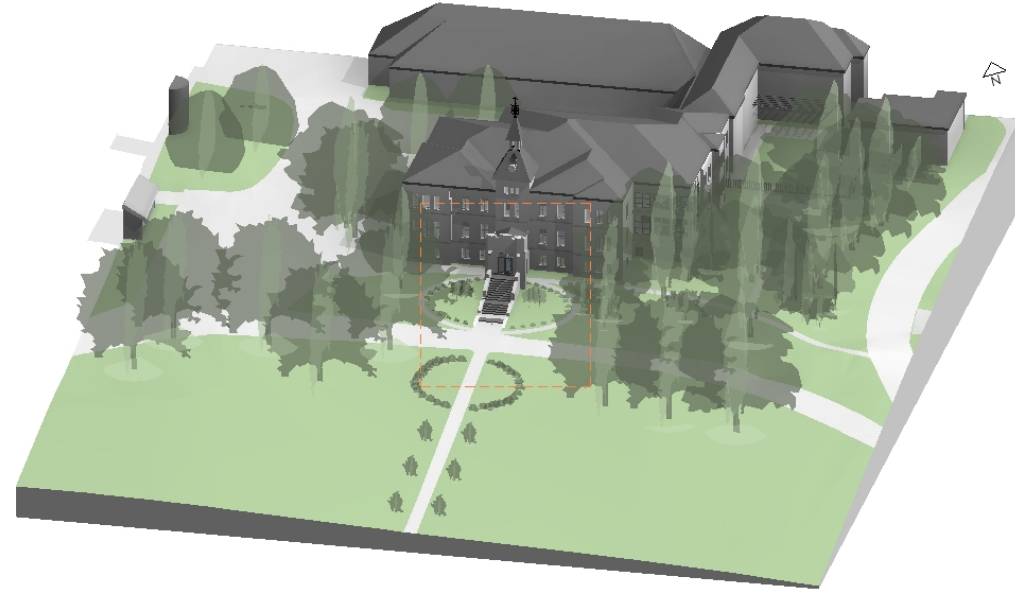
1. Museum

1a. New Entrance, Lighting + Signage

The high-profile WCMA building perched above County Road 18 already attracts curious visitors to this unique campus. Improvements to wayfinding, signage and branding are proposed to facilitate better access.

Double Entrance – The building entrances will be returned to their original design which maintains the Level 0 (accessible) entrance and returns the existing front stair as the original main entrance to Level 1. Proposed new pathways will improve access to both entrances.

Lighting + Signage - The museum façade will be featured with projected lighting at nighttime. Electrical receptacles will be installed at the front of the building for additional projection – such as animation, and signage/ branding opportunities.



Montreal, Quebec

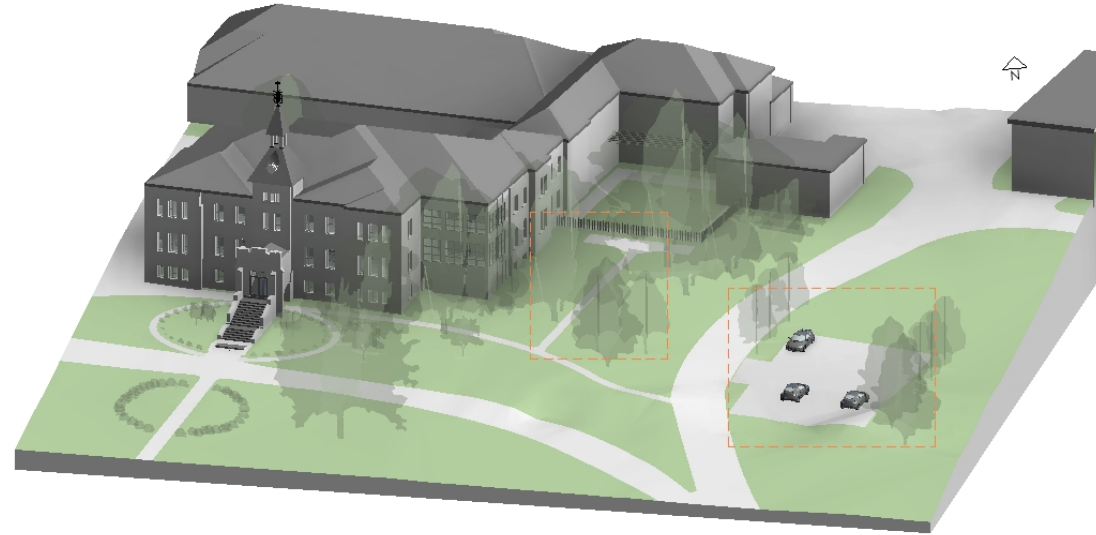
1. Museum

1b. East Parking Lot + Pathways

There is a need for more parking at the WCMA site. Creating another small parking lot with 20 spots on the east side of the Museum would enable parking for the snow hill as well as create symmetry for the formal face of the site. A walkway is proposed to provide the same symmetry and connection to the east gardens and main entrance. WCMA are regular hosts to Terrace residents on golf cart tours and providing them additional paths and gardens would be of benefit.

East Parking Lot – the new lot is located on the eastern access road, providing additional parking close to the building. Additional trees will screen parking from winter snow hill activities.

New Pathways – Additional pathways will connect existing and proposed features with the building entrances. One will connect the existing the terrace gardens and apple orchard which provide photo opportunities for museum visitors or event guests. Another will lead from the new east parking lot.



1. Museum

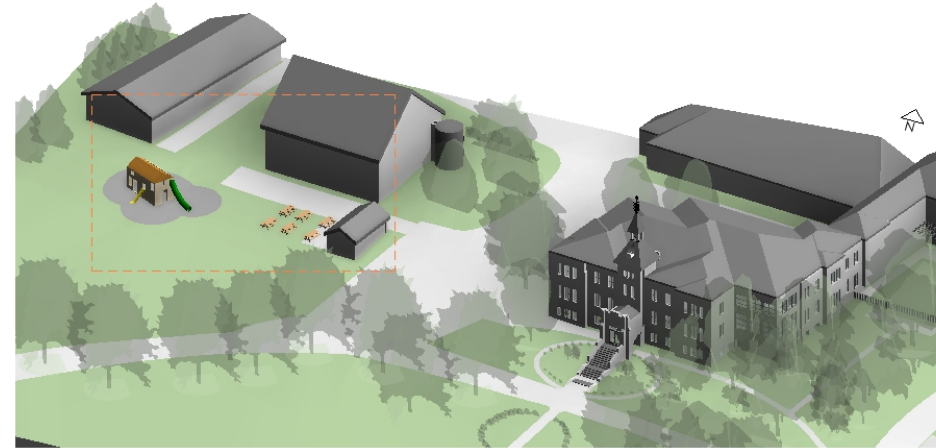
1c. Barn Paddock + Playground + Stage

The paddock is currently the largest space for audiences but lacks accessible space. Already well used, WCMA would like to continue to host small music events, children's workshops, events on the lawn, and provide access for the Aboyne Child Care Centre children who regularly frequent the site. Enhancements include:

Accessible seating area – A new concrete pad located beside the poultry house, connecting to the existing 'stage' concrete pad which will provide accessibility. Adjacent tables create a picnic area and require shading devices, umbrellas and/or shade trees in the hot summer months.

Stage – Outdoor electrical receptacles will be installed to support the outdoor events with additional lighting and sound capabilities.

Play Structure – A new play structure will incorporate an agricultural theme including a whimsical outhouse element which tells yet another story of life at the time and especially the poor house.



2. Community Engagement

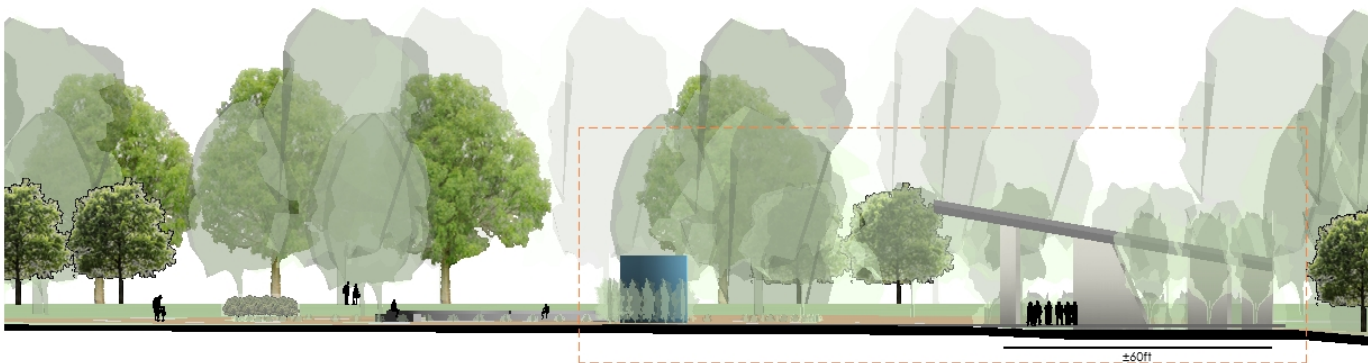
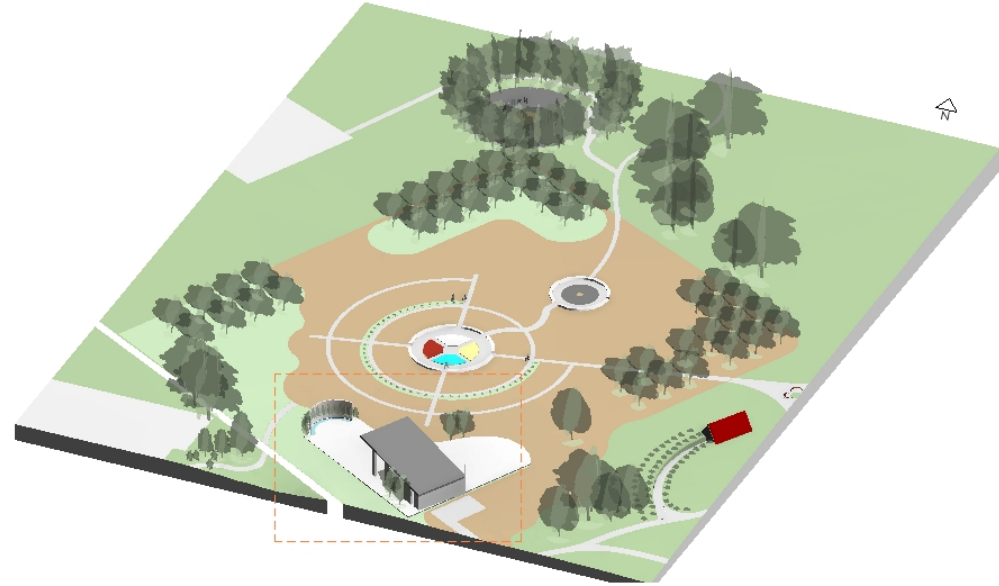
2a. Entrance Pavilion, Patio Terrace + Water Feature

Entrance Garden – A new pathway will lead from the north parking lot to a new gathering space and pavilion. The garden terrace is surrounded by trees which offer shade and protection from prevailing NW winds. A curved water wall will be a tribute to the poor house and offer photo opportunities for visitors.

Pavilion – A new timber frame and stone structure will be open as a picnic or weather shelter for most of the year. During winter months, the pavilion will transform into a skating rink, fully accessible from the building's west entrance. Partial walls will protect from prevailing winds. For events, caterers will access a built-in counter with a sink along the back wall during warm weather months. Tables and chairs can be retrieved from the storage room located at the rear of the pavilion.

Terrace – A hard surface patio terrace wraps around the building, surrounded by trees. It offers daily opportunities for lunch stops, meet-ups or special events, and connects to other trails and the expansive community engagement area.

Access and Serviceability - Vehicle access is provided at the rear of the pavilion for catering, maintenance or temporary washroom vehicles.



2. Community Engagement

2b. The Indigenous Medicine Garden

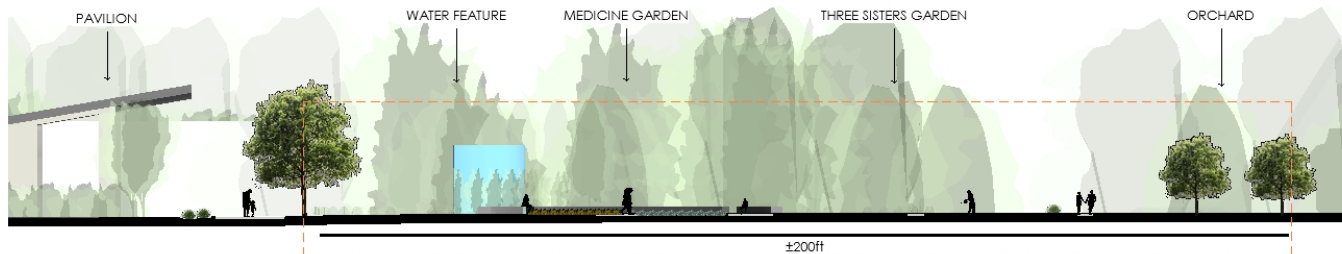
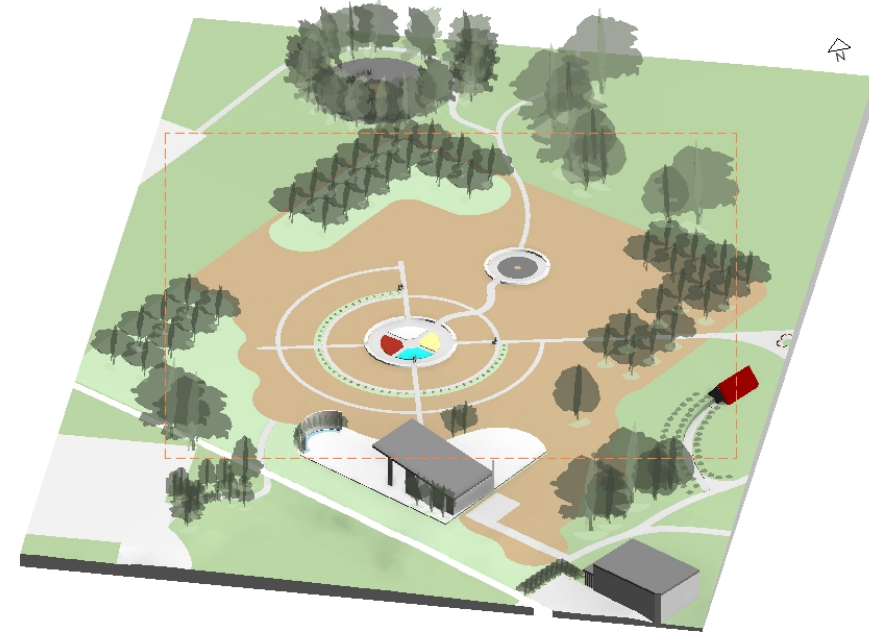
Various segments of the community are served by the Wellington Place institutional campus, but a safe and accessible space for engagement is missing.

The Medicine Garden will be Wellington County's first dedicated Indigenous space for ceremony and programming. It will include a multi-purpose pavilion for teachings, workshops and events; space for ceremony, orchards, native species and a Three Sisters Garden. It will provide inclusivity and vibrancy to the Wellington Place campus.

The Garden will act as a space for inspiration and engaging the public, including children, in its planning, planting, ongoing upkeep and connection to the land through storytelling and traditional teachings. The County's diverse populations will have a space for community and professional learning about land-based pedagogies, and Indigenous community members will have a safe space for healing.

Wellington County's Indigenous Advisory Committee provided the rendering concept for the master plan and will guide the future planning of the Garden in a collaborative and inclusive way, engaging Indigenous communities, the public and Wellington Place campus members.

The garden features circular and quadrant paths which reflect Indigenous beliefs and frame the plantings. Armour stone seating is built into the medicine garden circle and the smaller gathering circle which will be used as a learning space.

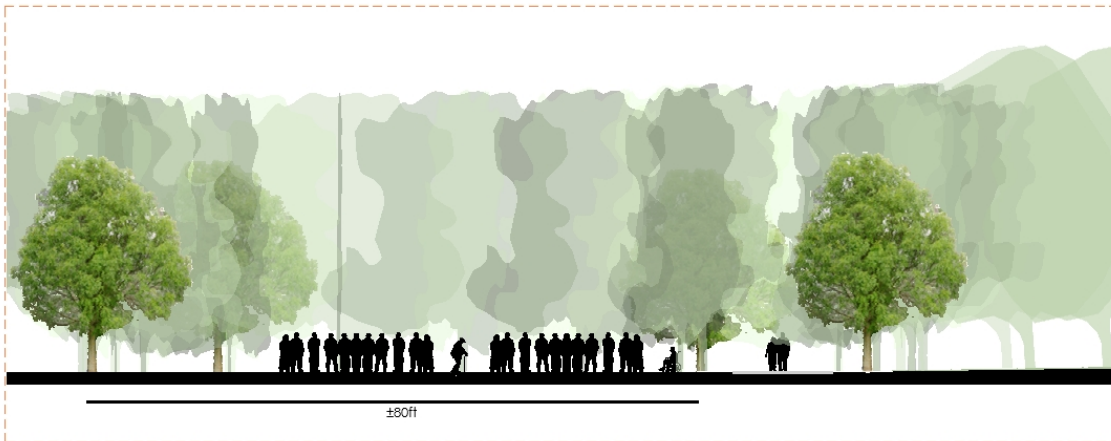
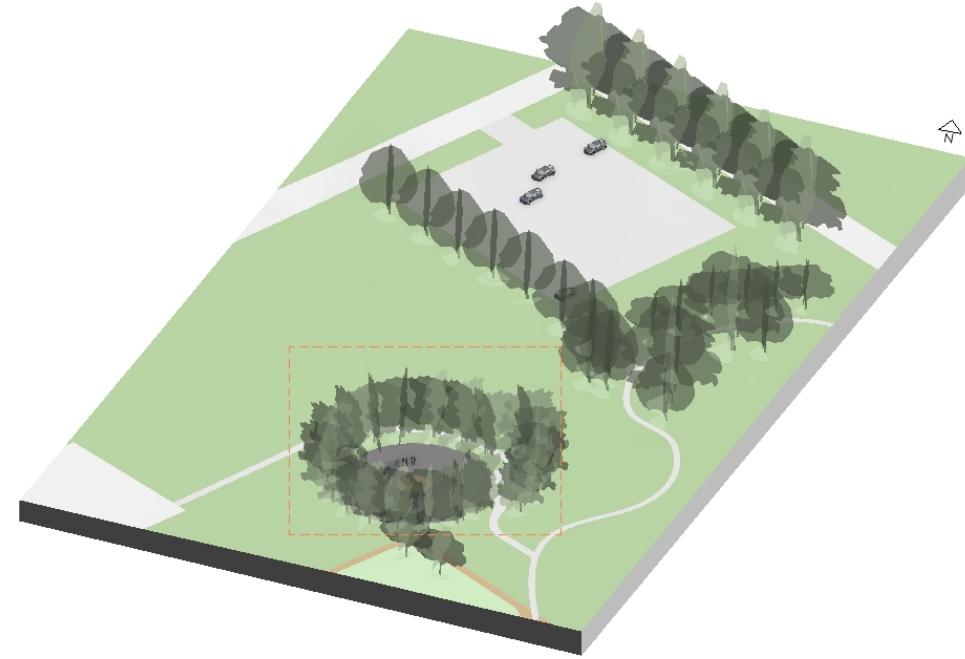


2. Community Engagement

2c. The Sacred Circle

A ceremonial space located northwest of the Medicine Garden will be used for ceremonies in healing and traditional use. Surrounded by mature cedar trees, the Sacred Circle will be hidden and secret from the remainder of the site. Parking is located nearby to assist users in accessing the space. A central circle will be used for ceremony by the Fire Keeper.

Access to all gathering and sacred spaces are from the east.



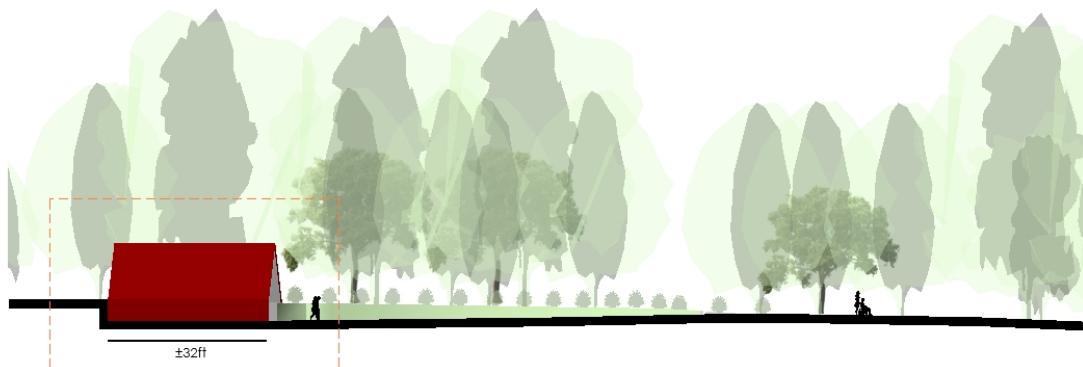
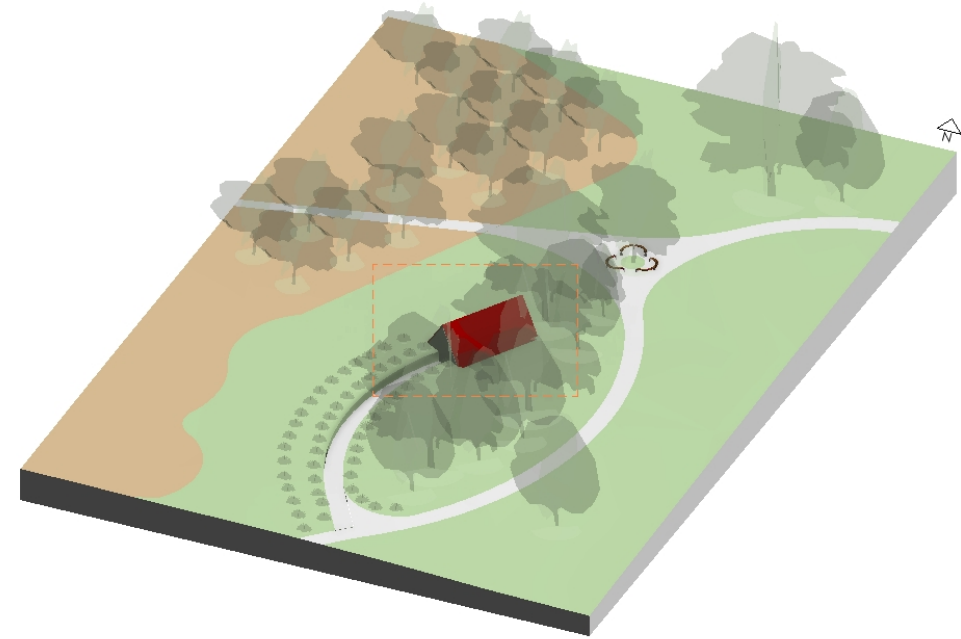
2. Community Engagement

2d. Root Cellar

Root cellars are once again growing in popularity and relevance. The Poor House originally had a root cellar, and this functional and interpretive display would demonstrate how the earth naturally cools, insulates, and humidifies, and its continued relevance into the future.

The cellar can be utilized for the adjacent gardens and orchards for food, tools and garden storage. The local educational community has expressed interest in using the root cellar for classes and a possible commercial kitchen for teaching canning and food preservation. As part of the utility of food keeping, the space around the cellar will be used for growing functional foods, incorporating interpretative displays.

The accessible underground space will feature an accessible path leading to its subterranean entrance.

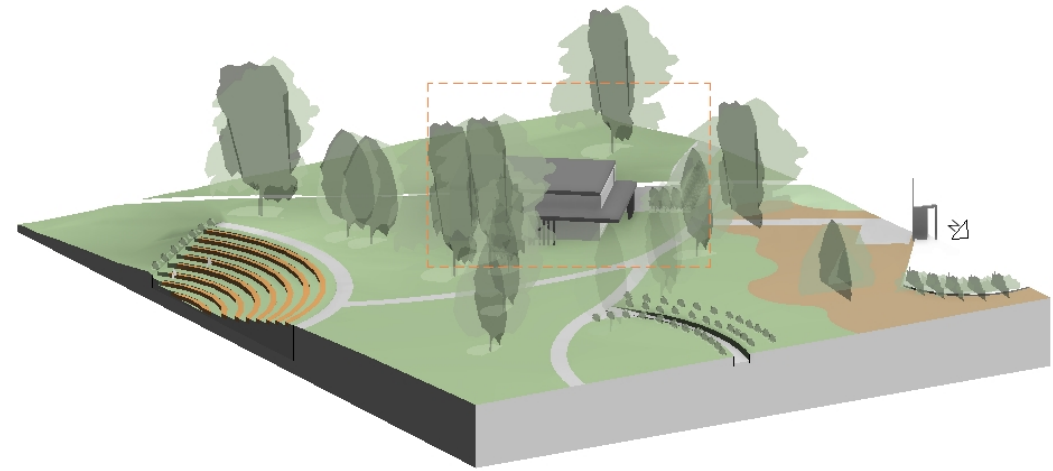


3. Artifact Storage, Display, Bike Repair + Water Fill Station

Staff have completed a storage inventory within the Museum, Archives, and outbuildings. As the collection of Wellington County historical artifacts grows, a new environmentally controlled storage space is required. Storage: The new environmentally controlled storage building will contain almost 3000 sq.ft. on one level. With a tall ceiling height required, it would be possible to build tall enough to install a mezzanine level in the future.

Display: the building will feature a glass viewing area visible to nearby trails for people to enjoy pieces of the collections or other displays from the exterior. Lighting will create visibility and safety at night.

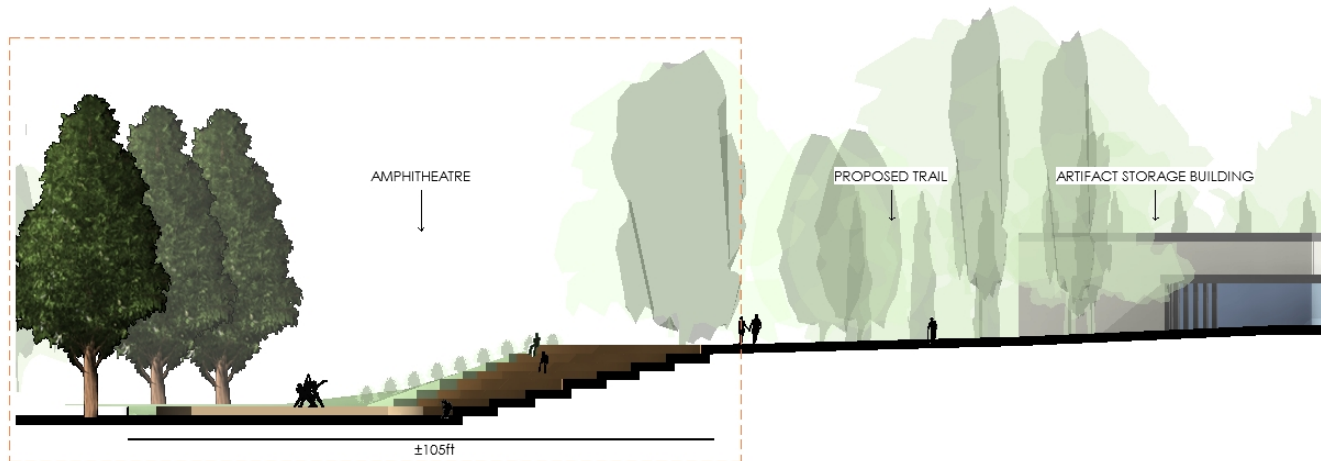
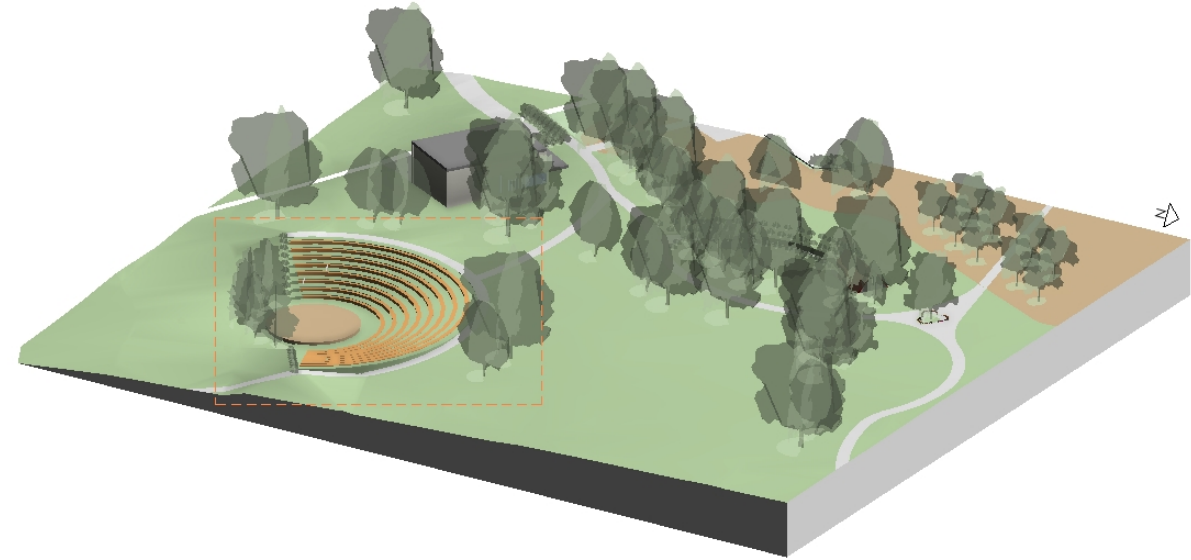
Bike Repair and Water Fill Stations: With all services provided to the building, and its location at the intersection of main trails, the building will also provide area for stopping for repairs or a water stop for people and their pets.



4. Amphitheatre

The amphitheatre is a classically designed gathering space for 200 people, strategically built into the sloped hill with views across the valley. Constructed in natural materials of stone or wood seating edging, and a performance stage at the circle centre, it becomes less formal within planted trees which provide shade in the summer sun.

This space can serve for open-air theatre, school engagement, casual gatherings or concerts. Temporary washrooms can be provided as needed for the various events.

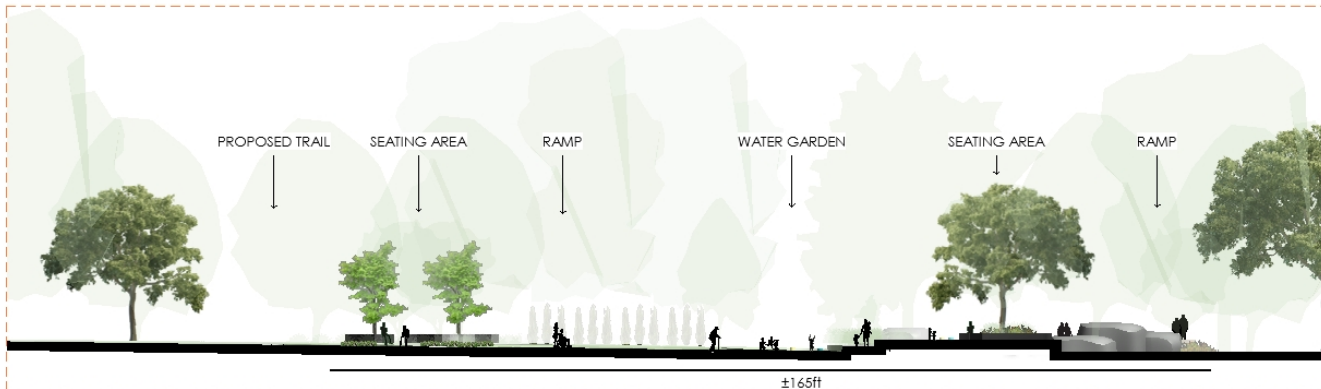
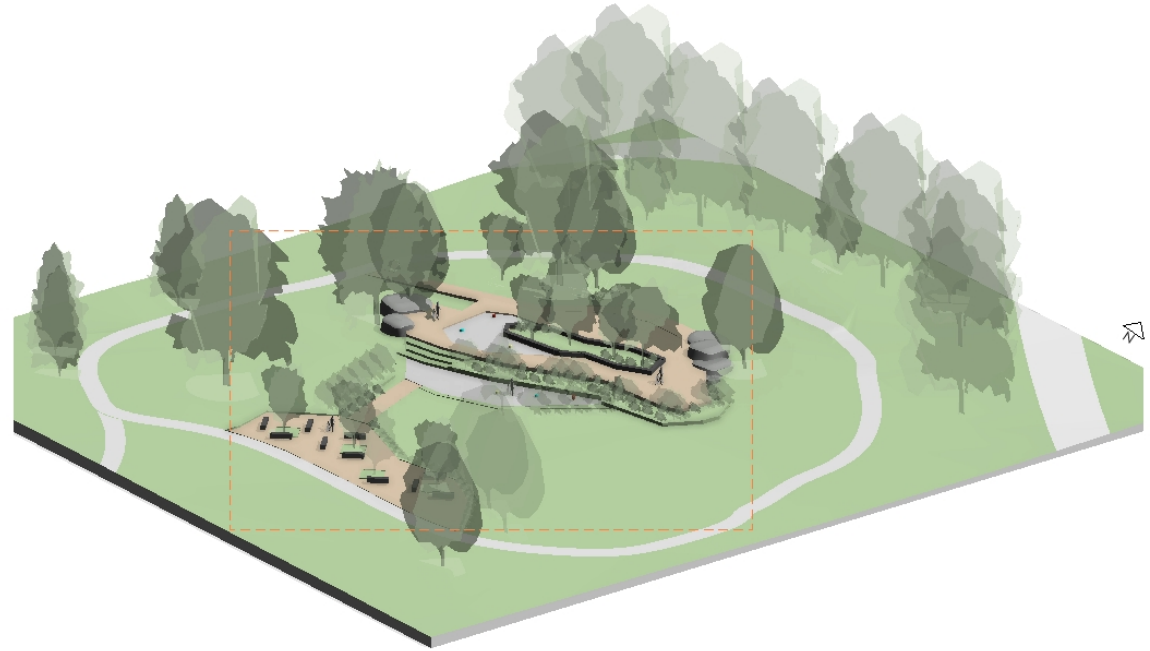


5. The Commons

As identified in the approved Wellington Place Concept Plan, the need for a large public commons area was expressed by the public.

The Commons is designed as an open green space with several trail pathways that circle through a forested landscape, looping around a central natural water garden. Envisioned to be a naturalized water play park on hot days, it will feature two separate water feature systems (upper and lower) with sprayers, change in levels, boulders, and natural vegetation. In the colder months, the space will become a winter garden.

Trees will screen the park from the adjacent roads and winds, and provide shade in the summer months.

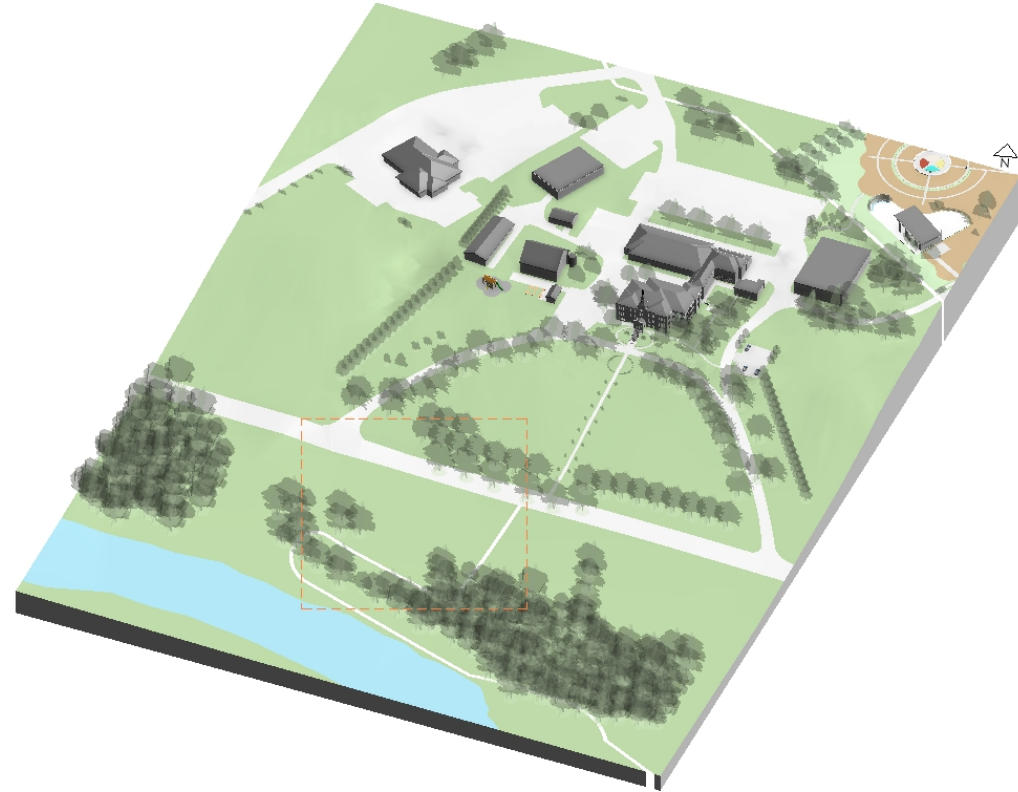


6. Meadow

A unique riverside landscape on the south side of County Road 18, the large area contains agricultural fields, forests, meadows and waterside banks of the Grand River. Minimal intervention is proposed in this space to maintain its character and natural offerings, such as foraging for wild plants such as mushrooms, leeks and fern fiddleheads, and develop nature and ecology programs for the public.

The trails receive great attention, and it is proposed to only add more experiences that align with the WCMA theme of creating awareness and educational opportunities. Benches and interpretive plaques are proposed as part of the program. As Indigenous partnerships are established through the development of the Medicine Garden, there may be opportunities for Indigenous use and teachings within the Meadow and river forest area.

A busy road, County Road 18 creates a divide between the museum property on the north and the meadow on the south. Safely crossing the road is becoming less tenable and alternatives should be sought to find a solution to maintain the spatial connection. A pedestrian crossing below the road would provide a safe connection linking each side.



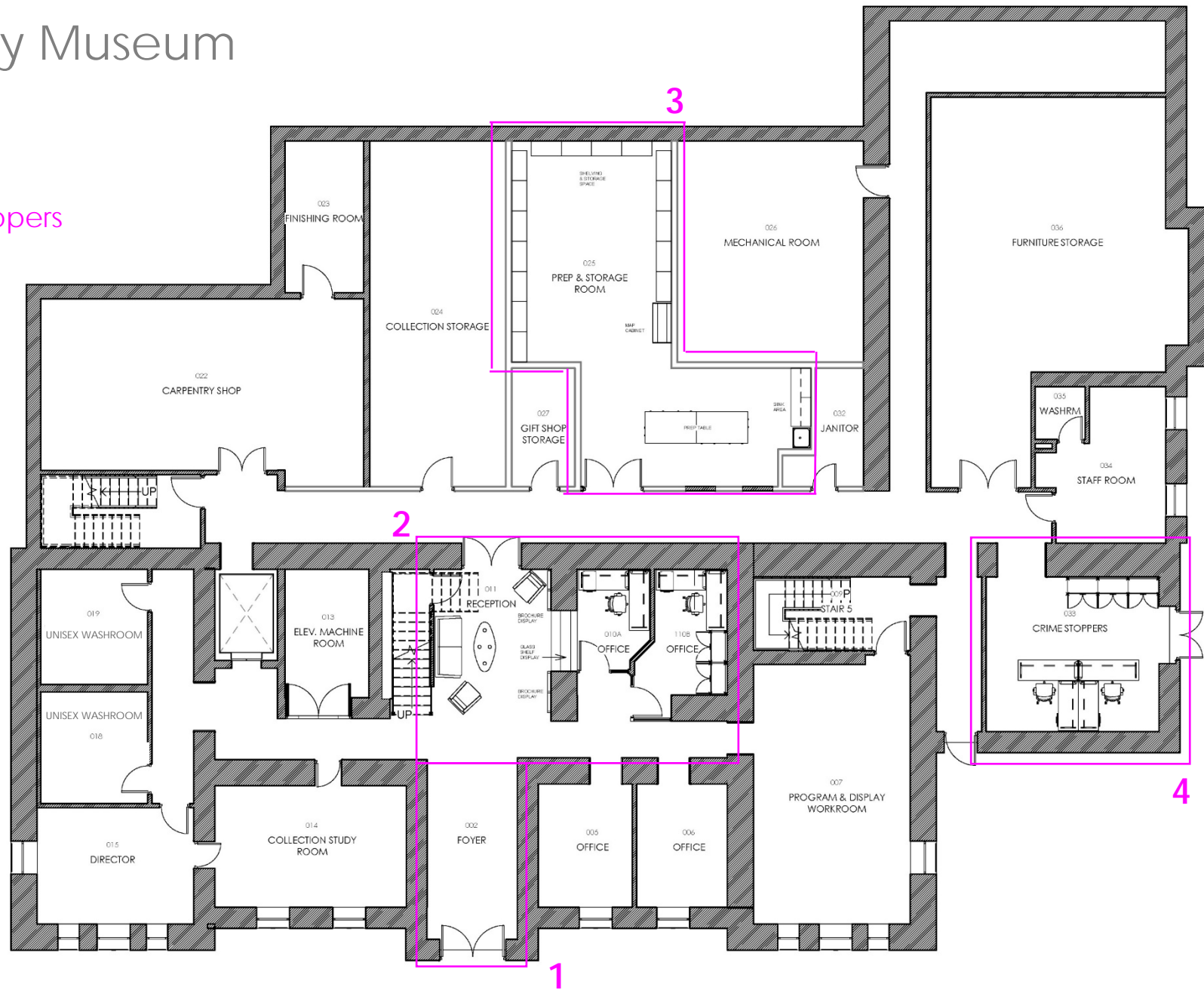
Museum Interior Updates

Wellington County Museum

Level 0

Areas of modifications:

1. Prep+Storage/ Crime Stoppers
2. Gift Shop/ Offices
3. Reception/ Lobby
4. Foyer

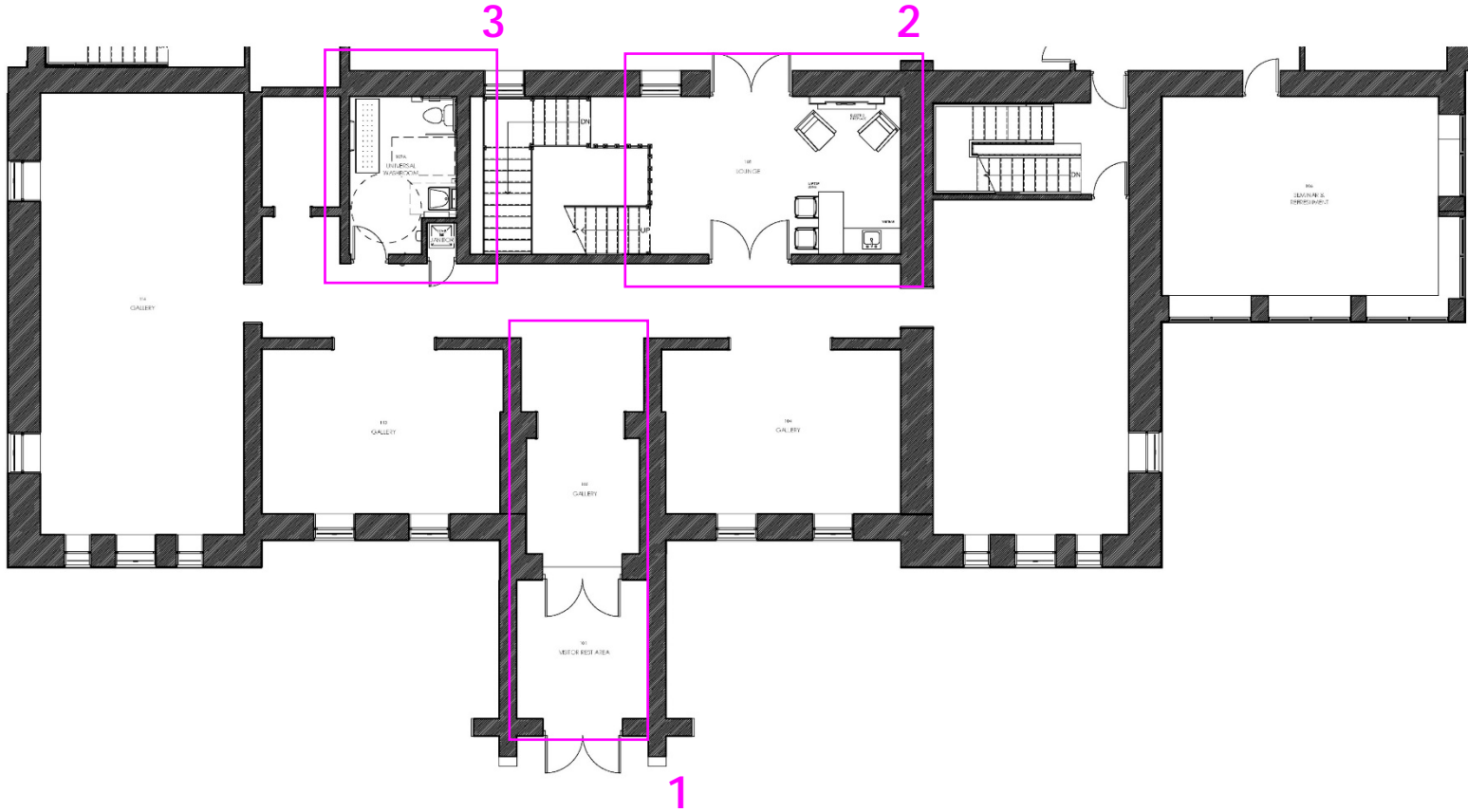


Wellington County Museum

Level 1

Areas of modifications:

1. Foyer entrance with new vestibule
2. Lounge update
3. Universal Washroom

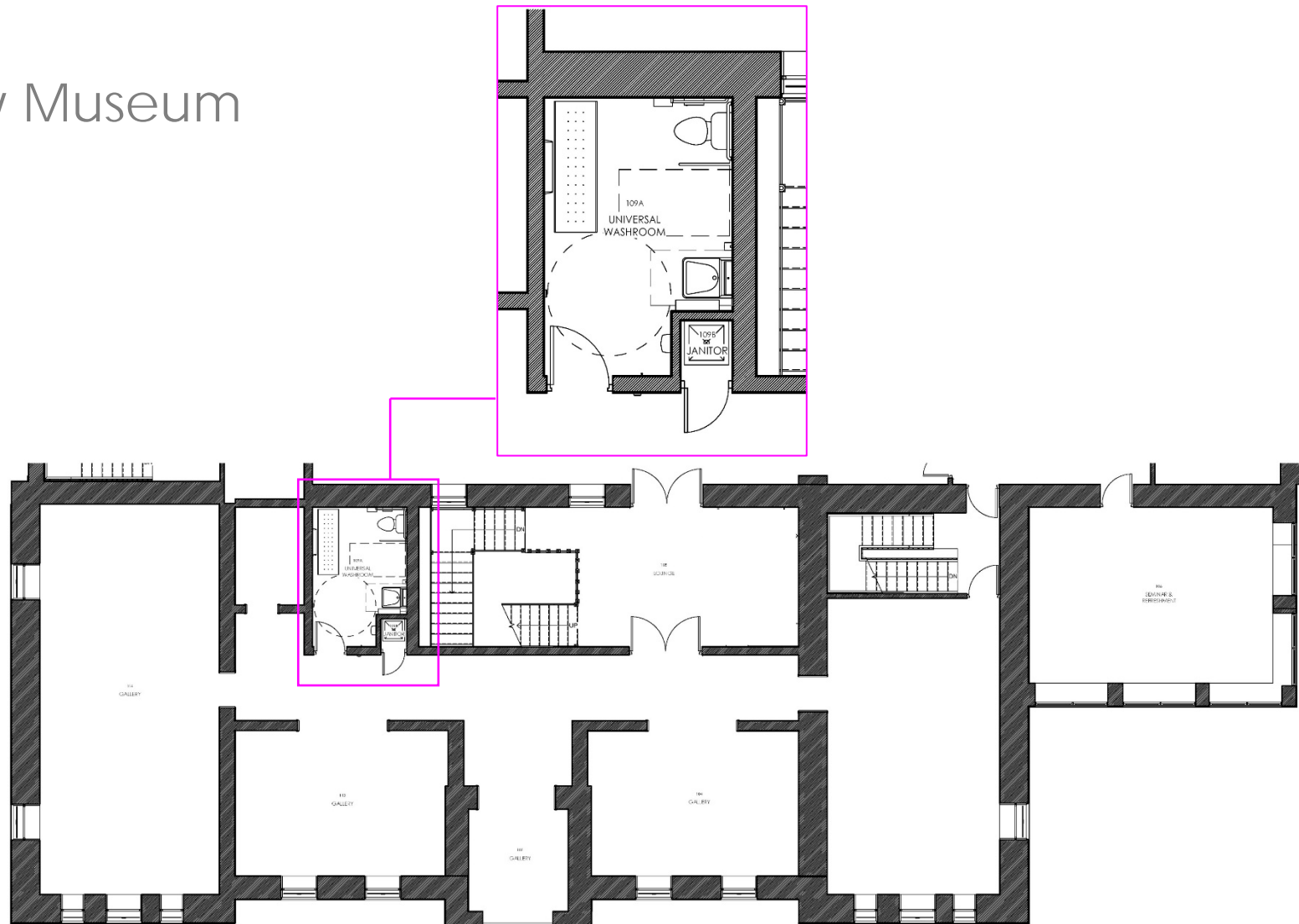


Wellington County Museum

Level 2

Area of modifications:

- Existing washrooms to Universal washroom
- Relocated Janitor's Closet



Wellington County Museum

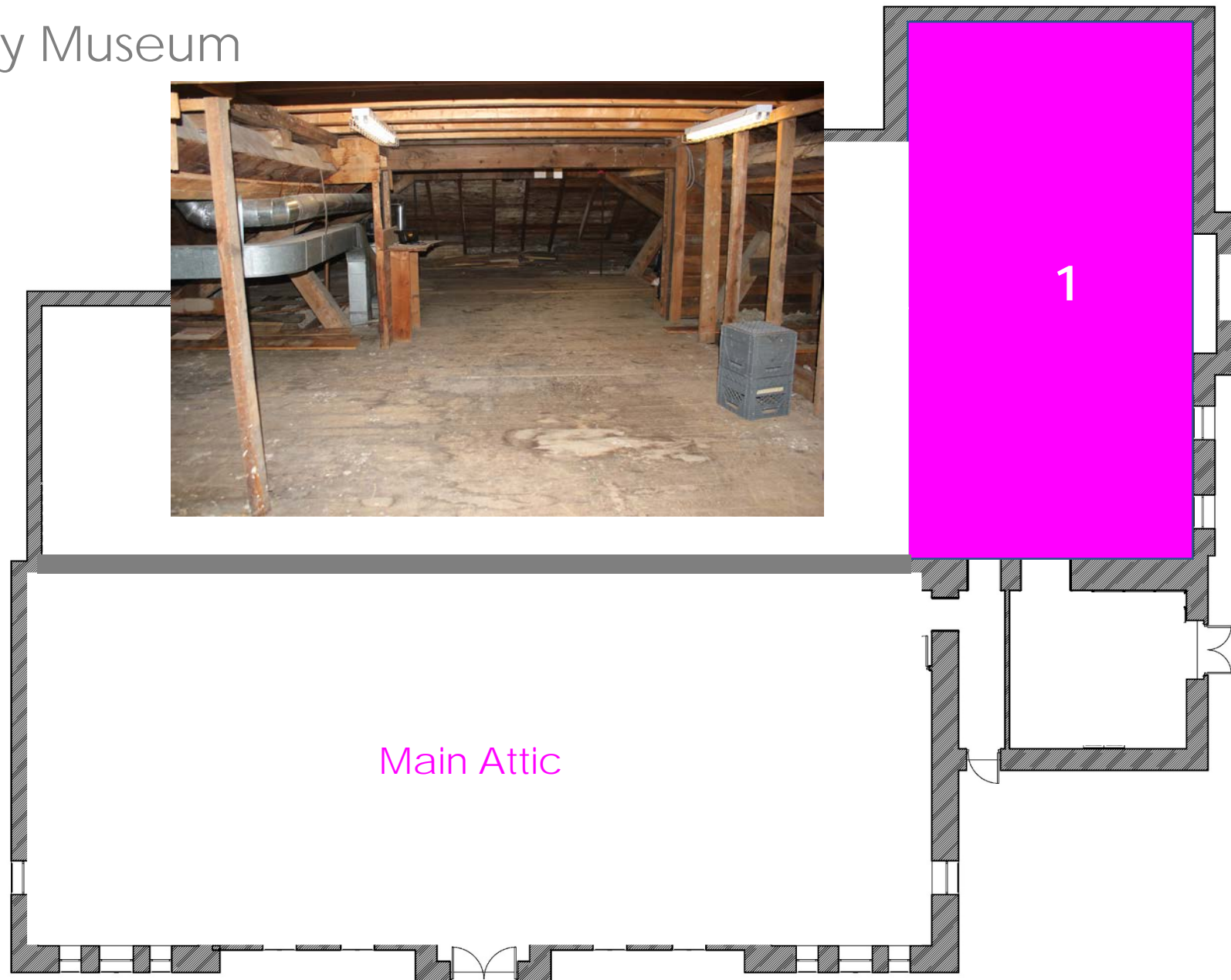
Attic

Area of modifications:

1. Small 'secret' attic area

Unknown to most is a special space under the roof of the east side of the Museum. This unfinished attic is accessed through a small wooden staircase adjacent to the Conservator's office.

Use of this space to be further explored for staff and potentially the public. Modifications include roof and building envelope upgrades, heating and cooling, and egress.



BUDGET 2022 ITEMS

1. Barn Paddock: natural playground & play structure
2. Medicine Garden with water supply
3. Sacred Circle
4. Community Engagement new trails and vehicle access
5. Storage Building upgrades: new mezzanine, humidification and water line, new freight lift.



Thank you!