

County of Wellington - Ontario Works



2018-21 County / City Caseload

Monthly County of Wellington Caseload	2018	2019	2020	2021	Change From Previous Month Cases	Change From Previous Month %	Change From Previous Year Cases	Change From Previous Year %
January	399	398	375	289	(7)	-2.4%	(86)	-22.9%
February	406	397	371	286	(3)	-1.0%	(85)	-22.9%
March	387	402	383	291	5	1.7%	(92)	-24.0%
April	383	414	386	292	1	0.3%	(94)	-24.4%
May	384	411	370	290	(2)	-0.7%	(80)	-21.6%
June	377	402	350	284	(6)	-2.1%	(66)	-18.9%
July	384	381	330	289	5	1.8%	(41)	-12.4%
August	380	381	322	287	(2)	-0.7%	(35)	-10.9%
September	394	372	306	269	(18)	-6.3%	(37)	-12.1%
October	389	374	316					
November	396	369	298					
December	395	354	296					
Total	4,674	4,655	4,103	2,577				
Average	390	388	342	286			(56)	-16.3%

Monthly City of Guelph Caseload	2018	2019	2020	2021	Change From Previous Month Cases	Change From Previous Month %	Change From Previous Year Cases	Change From Previous Year %
January	1,653	1,612	1,680	1,279	(18)	-1.4%	(401)	-23.9%
February	1,694	1,600	1,697	1,241	(38)	-3.0%	(456)	-26.9%
March	1,662	1,610	1,712	1,243	2	0.2%	(469)	-27.4%
April	1,659	1,611	1,772	1,222	(21)	-1.7%	(550)	-31.0%
May	1,683	1,658	1,667	1,212	(10)	-0.8%	(455)	-27.3%
June	1,684	1,669	1,578	1,201	(11)	-0.9%	(377)	-23.9%
July	1,651	1,668	1,522	1,203	2	0.2%	(319)	-21.0%
August	1,670	1,699	1,482	1,176	(27)	-2.2%	(306)	-20.6%
September	1,608	1,672	1,392	1,111	(65)	-5.5%	(281)	-20.2%
October	1,612	1,647	1,355					
November	1,605	1,640	1,325					
December	1,581	1,651	1,297					
Total	19,762	19,737	18,479	10,888				
Average	1,647	1,645	1,540	1,210			(330)	-21.4%

County of Wellington - Ontario Works



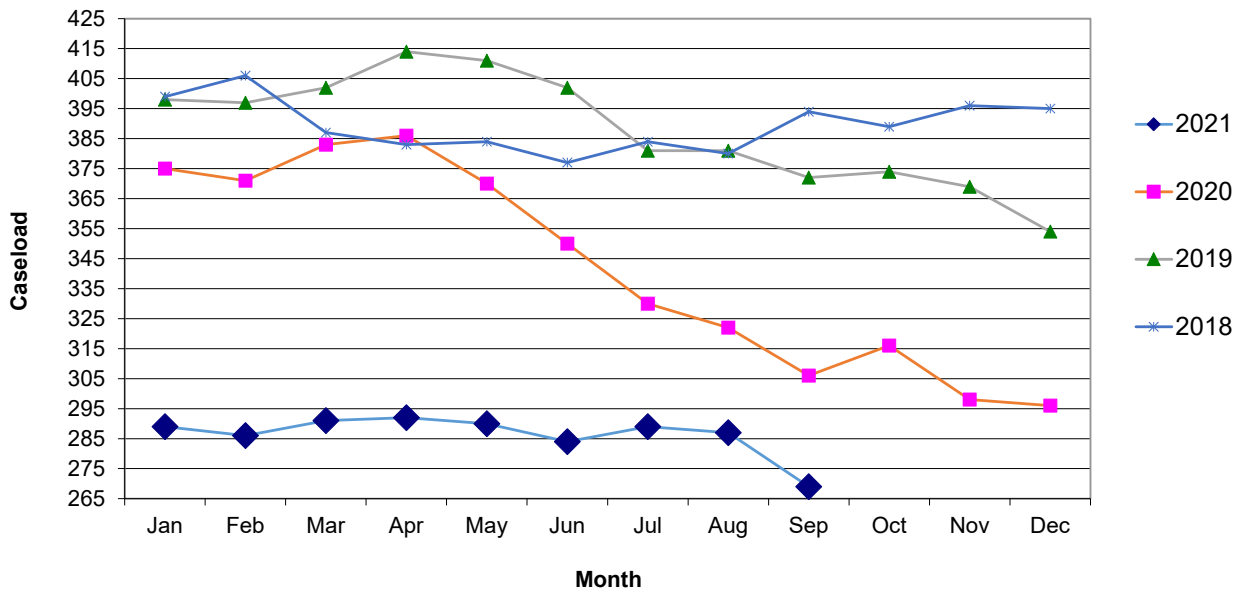
2018-21 County / City Caseload

Monthly Total City and County Combined Caseload	2018	2019	2020	2021	Change From Previous Month Cases	Change From Previous Month %	Change From Previous Year Cases	Change From Previous Year %
January	2,052	2,010	2,055	1,568	(25)	-1.6%	(487)	-23.7%
February	2,100	1,997	2,068	1,527	(41)	-2.6%	(541)	-26.2%
March	2,049	2,012	2,095	1,534	7	0.5%	(561)	-26.8%
April	2,042	2,025	2,158	1,514	(20)	-1.3%	(644)	-29.8%
May	2,067	2,069	2,037	1,502	(12)	-0.8%	(535)	-26.3%
June	2,061	2,071	1,928	1,485	(17)	-1.1%	(443)	-23.0%
July	2,035	2,049	1,852	1,492	7	0.5%	(360)	-19.4%
August	2,050	2,080	1,804	1,463	(29)	-1.9%	(341)	-18.9%
September	2,002	2,044	1,698	1,380	(83)	-5.7%	(318)	-18.7%
October	2,001	2,021	1,671					
November	2,001	2,009	1,623					
December	1,976	2,005	1,593					
Total	24,436	24,392	22,582	13,465				
Average	2,036	2,033	1,882	1,496			(386)	-20.5%

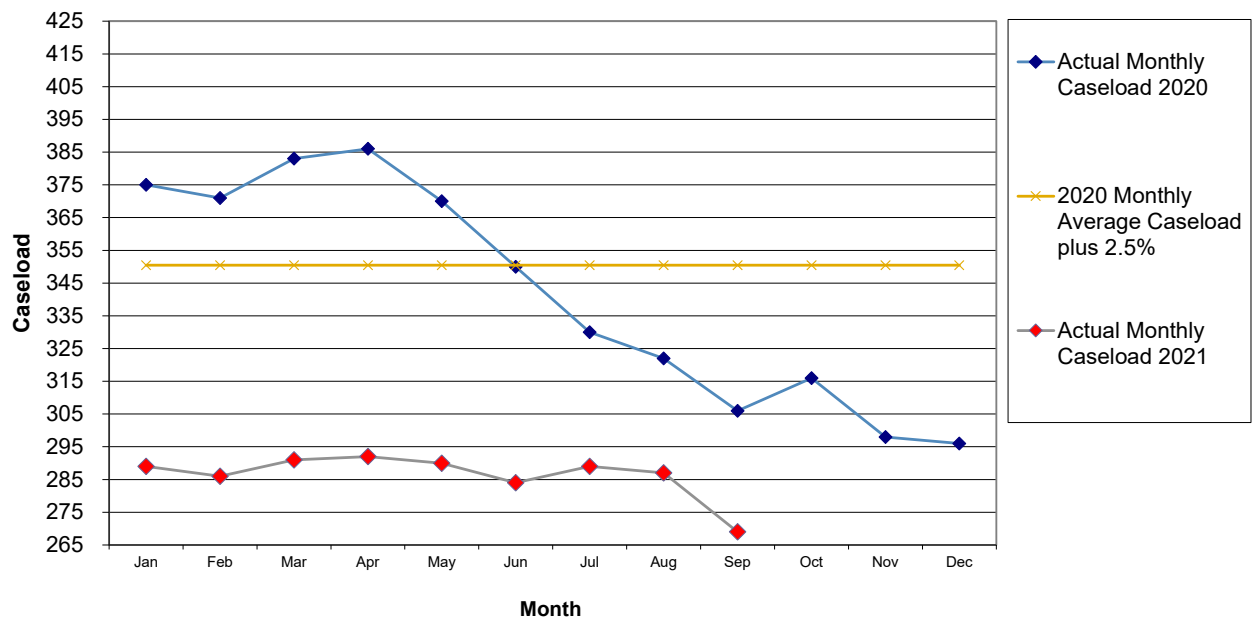
Monthly City/County % Share of Caseload	City 2018	County 2018	City 2019	County 2019	City 2020	County 2020	City 2021	County 2021
January	80.6%	19.4%	80.2%	19.8%	81.8%	18.2%	81.6%	18.4%
February	80.7%	19.3%	80.1%	19.9%	82.1%	17.9%	81.3%	18.7%
March	81.1%	18.9%	80.0%	20.0%	81.7%	18.3%	81.0%	19.0%
April	81.2%	18.8%	79.6%	20.4%	82.1%	17.9%	80.7%	19.3%
May	81.4%	18.6%	80.1%	19.9%	81.8%	18.2%	80.7%	19.3%
June	81.7%	18.3%	80.6%	19.4%	81.8%	18.2%	80.9%	19.1%
July	81.1%	18.9%	81.4%	18.6%	82.2%	17.8%	80.6%	19.4%
August	81.5%	18.5%	81.7%	18.3%	82.2%	17.8%	80.4%	19.6%
September	80.3%	19.7%	81.8%	18.2%	82.0%	18.0%	80.5%	19.5%
October	80.6%	19.4%	81.5%	18.5%	81.1%	18.9%		
November	80.2%	19.8%	81.6%	18.4%	81.6%	18.4%		
December	80.0%	20.0%	82.3%	17.7%	81.4%	18.6%		
Average	80.9%	19.1%	80.9%	19.1%	81.8%	18.2%	80.9%	19.1%

Note: City/County splits are based on % municipal breakdown caseload report as a % of the Official Stats on the Operational Report

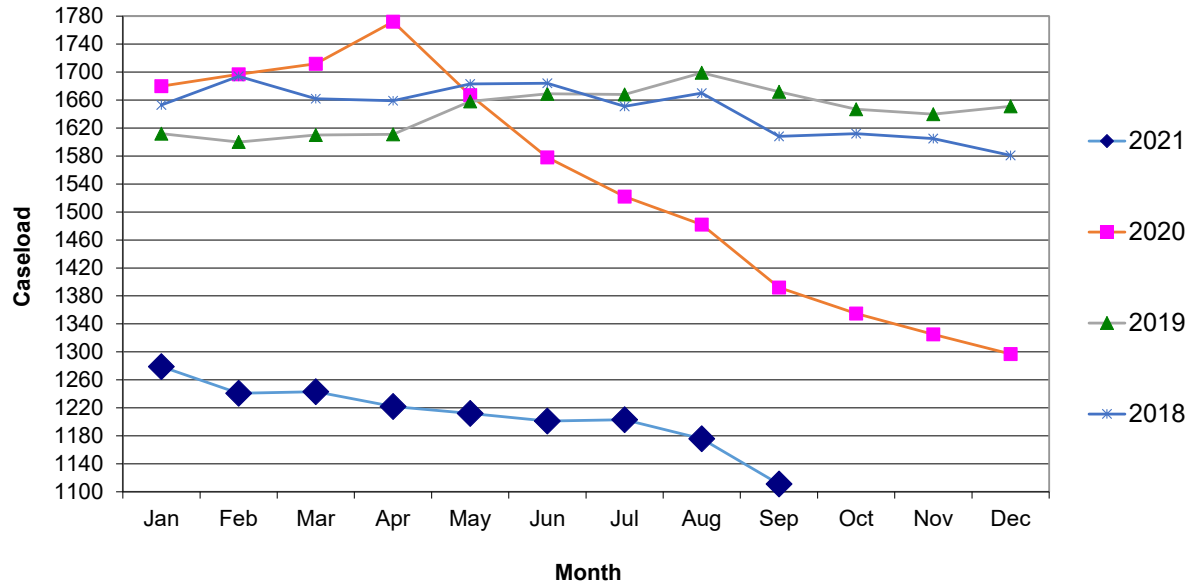
County of Wellington Ontario Works Caseload - January 2018 to September 2021



County of Wellington Ontario Works Caseload Budget/Actual Comparison



City of Guelph Ontario Works Caseload - January 2018 to September 2021



City of Guelph Ontario Works Caseload Budget/Actual Comparison

