



**Wellington O.P.P.
Detachment Board Report**

February 2025

Detachment Commander:
Inspector Steve Thomas

From the Detachment Commander

With spring around the corner and the current forecast for heavy rain and warmer temperatures I want to take this opportunity to remind everyone about the potential dangers related to fast moving waterways due to snow melt and melting ice, especially in conjunction with the anticipated heavy rain at the start of March. Fast moving waterways are dangerous to everyone, but especially children and pets that get to close to the water's edge. Please take every precaution and maintain a safe distance from the riverbanks and lake sides.

Although the snow melt is upon us and spring is almost here, there is the possibility that we could see a return to subzero temperatures, wind chill and blasts of snow throughout the month. Please, leave your snow tires on and if the winter weather does return slow down and drive according to the weather conditions. Be prepared, our actions can save lives.

March is Fraud Prevention month. Fraud investigations can be tedious and time consuming, often requiring judicial authorizations to obtain banking information and track the flow of money. Please do not open, click on or respond to suspicious emails. Do not click on random advertisements you see on the Internet offering you money or prizes. And always contact a government agency or bank via telephone using the phone number listed on their website to confirm if something you have received is valid. It may take some time to get through via telephone, but that time will be well spent if it stops you from falling for a scam that could cost you hundreds, if not thousands of dollars. If you believe that you have been sent a fraudulent email or received a phone call or something via regular mail please call the Canadian Anti-Fraud Centre at 1-888-495-8501 or visit their website: <https://antifraudcentre-centreantifraude.ca/index-eng.htm>. If you do fall victim to a fraud, either loss of money or personal information please call the OPP non-emergency line at 1-888-310-1122 or attend one of the three OPP detachments in Wellington County.



Inspector Steve Thomas
519-846-5930

Index	
Crime	3
Traffic	5
Community Response	7
Court	11
Personnel & Acknowledgements	12
Report Summary	13
Statistical Summary	14

Crime

Crime Unit

Supervisor: Acting Detective Sergeant, Tyler Cowie

In the month of February, the Wellington County Crime Unit received benchmark occurrence notifications for several sexual assaults and frauds that have been assigned to investigators for follow up. Arrests were also made in three sexual assault related investigations and a fraud investigation.

One officer completed a temporary development assignment in the crime unit and has now returned to her Platoon. The open position will be filled by another member on a temporary assignment for three months beginning March 3rd.

Crime Unit members completed training in February including the Indigenous Awareness Course, attendance at a Hate Crime conference in Toronto and completion of yearly block/refresher training.

Significant progress is being made as investigators continue to investigate the armed home invasion that occurred at a home in Morriston at the end of January.



Community Street Crime Unit

Supervisor: Detective Sergeant, Jeffrey Dudley

In February, the Community Street Crime Unit (CSCU) welcomed a new member to the team. This member previously completed an eight-month temporary assignment and was successful in a competition for a full-time position in the unit. This member has developed a wide variety of investigative skills due to their seven years as a Provincial Constable.

Wellington County CSCU continues to support the Major Crime Unit and frontline investigations where possible.

As part of our commitment to continuous learning, CSCU Members attended various training course and workshops within West Region. The officers bring back knowledge they can share with front line, and it has provided them with additional tools to utilize during their investigations.

CSCU conducted a two-month investigation into drug trafficking in Center Wellington resulting in the arrest of one individual and the seizure of \$65,000 worth of illicit drugs. CSCU then executed a search warrant as part of the same investigation resulting in the seizure of \$15,000 worth of illicit drugs. CSCU continues to target individuals who are spreading harm in our communities.

Wellington CSCU assisted Huron/Perth CSCU with a multi search warrant executions in South Huron as part of an ongoing drugs investigation. As a result, two people were arrested for trafficking related offences. Police seized a quantity of illicit drugs and drugs trafficking indicia.

Wellington CSCU continues to prioritize local crime trends, the opioid crises and targeting local people identified in property thefts. CSCU members are committed to continuous learning and are attending training when time permits. CSCU has developed local training, mentoring initiatives for front line members to promote officer safety and enhance their local knowledge on the current drug and property crimes trends in the area.



Traffic

Traffic Management Unit

Supervisor: Acting Sergeant Darryl Unger

Black Cat Speed Monitoring Devices

County Deployed	Study Length	Number of Vehicles	Recommended Enhanced Enforcement	Posted Speed Limit	85 th Percentile	Collision History (5 years)
Location						
Wellington Road 10 @ Booth	7 days	8,244	No	50	67	Nothing significant
Location						
Wellington Road 18 @ Wellington Road 26	7 days	26,730	No	80	89	Nothing significant
Location						
Wellington Road 18 @ Orangeville	7 days	58,295	No	70	76	Nothing significant
Location						
Wellington Road 22 @ Jones Baseline	7 days	8,964	No	80	96	Nothing significant
Location						
Wellington Road 39	7 days	28,922	Yes	50	71	Nothing significant
Location						
Wellington Road 51	7 days	16,125	Yes	50	77	Nothing significant

Enhanced Enforcement Program

Enhanced Enforcement is a focused traffic safety initiative which areas of concern are identified through various means and police conduct education and charge drivers who fail to follow the rules of the road. The goal is to reduce safety issues through visibility, presence, and enforcement.

Two new enhanced enforcements have been added for the month of March at Wellington Road 39 and Wellington Road 51.

Traffic Management Unit - Administration

Snowmobile patrols continued in Wellington County. Year to date, 17 days of patrol have been completed travelling 1,833kms with 1,044 snowmobiles being checked resulting in 68 charges and 82 warnings.

Members of the Wellington Detachment conducted over 46 RIDE spot checks across the County.

PC Griffin and PC Campbell continue to be busy assisting MTO with various truck enforcement blitzes.

Wellington TMU members attended the Breath Technician course, Level 2 collision course and the Motorized Snow Vehicle course. TMU members assisted in instructing the Level 2 collision course, DRE course and the SFST course.

Wellington County Detachment investigated a total of 167 motor vehicle collisions in the month of February. There were several collisions with serious injuries and unfortunately one fatality.



Community Response

Community Response Unit

Supervisor: A/Sergeant Patrick Mullan

Community Response Unit / Offender Management & Apprehension Program:

Offender Management & Apprehension Program

The members of the Community Response Unit (CRU) continue facilitating the Offender Management & Apprehension Program.

At the end of January 2025, there were 17 classified as 'Priority Warrants'. At the conclusion of February 2025, there were 20 Priority Warrants in Wellington County. It should be noted that the offences for Priority Warrants have been updated to include more serious Criminal Code offences. Further, each Priority Offender has been actioned in some way to try and determine their whereabouts. A significant amount of the local priority offenders have fled out of jurisdiction, interprovincially and internationally.

For two days in February, members of the Bail Support Team and a member of the Canadian Border Services Agency attended the Centre Wellington Operations Centre to offer Wellington County members training relating to Offender Management and the apprehension of wanted persons. CBSA were able to provide information on valuable intelligence that can be shared with police.



Current number of wanted persons: 148

Current number of warrants: 151

Total number of warrants executed in February: 26

Total number of compliance checks in February: 21

Community Safety and Services

The Wellington County Community Services Officer has been very hard at work planning the next Citizens Police Academy class, set to begin the first week of March. A spectrum of applicants was received and the spots filled quickly. The selected persons will meet once per week for several weeks where they will learn all about policing. There are several guest presenters lined up and this should make for an exciting spring for the attendees.

Locally, February was a busy month for media engagement, especially social media. The winter weather was a great time to post a locally produced safe driving video, tips on winter driving and safety information relating to the weather.



Our Command Team and Community Safety team attended the CTV News Studios mid-February for chance to discuss police-media relations and community engagement.

Our Community Response Unit has begun the task of planning and working with major event coordinators for the busy Spring/Summer public event season. They will work with event planners to ensure public safety is a priority.

CRU have also prepared for the Youth Academy to return mid-March. This gives a chance for local young people to engage with police and learn more about what we do. The focus is on community betterment.

The Media Unit completed approximately 85 media releases in February. The unit also took part in a radio interview with TheRiver, and a presentation on ‘Mitigating Everyday Risk for Personal Safety’ to County of Wellington employees via their wellness ‘Lunch/Learn program’.

IMPACT (Integrated Mobile Police and Crisis Team)

January 2025

Individuals Served	Requests for Service	Live Calls with Police	Calls Diverted from Hospital
59	66	21	100%

Auxiliary Unit

Unit Commander: Auxiliary Staff Sergeant J. SWAN

Liaison: Provincial Constable Kyle Draves

The Auxiliary unit training this month consisted of an online observational exercise and a review on professionalism. We had two members who were successful joining the OPP Uniform Recruitment class starting in March. I am confident these members will bring valuable experience to their OPP careers. We also assisted at the memorial service for an OPP civilian employee in Palmerston.

We assisted with a fraud prevention presentation in Aberfoyle this month. Auxiliary Inspector Brad Hull attended and he reported:

On Wednesday, February 19th, I was invited to present to residents of Puslinch Township in Wellington County at a local community meeting. There have been numerous residential break-ins recently, and the Community Response Unit (CRU) asked if I had anything I could present.

Since I was given 90 minutes, I delivered a combined presentation on Fraud and SafeGuard. There were about 60 people in attendance, along with five regular force members from the Wellington County detachment in attendance to answer residents' questions.

We had one member complete a motorized snow vehicle course that was set up specifically for Auxiliary members this month. This was a new opportunity for the Auxiliary Program and we were pleased that we had someone who was able to give up the time to attend. A great deal of thanks goes out to members of the detachment and command staff who provided support to ensure our member could attend and participate.

Safe Communities Wellington County

In February 2025, Safe Communities Wellington County (SCWC) implemented several initiatives to enhance community safety and well-being:

1. Winter Walk to School Month:
 - SCWC promoted Winter Walk to School Month through social media and radio campaigns, encouraging students and families to engage in active transportation during the winter season.
2. Falls Prevention Among Older Adults:
 - To address the risk of falls in the senior population, SCWC focused on awareness through social media platforms and participated in the Victoria Park Seniors Centre Active Living Show at the Centre Wellington Sportsplex.
3. Accidental Poisoning Awareness:
 - In anticipation of Poison Prevention Week in March, SCWC initiated discussions on accidental poisonings, aiming to educate the community on prevention strategies.
4. Engagement with Wellington County OPP Board:
 - SCWC presented at the Wellington County Ontario Provincial Police (OPP) Board Meeting, outlining plans and priorities for 2025, reinforcing collaboration with law enforcement to enhance community safety.

These initiatives reflect SCWC's commitment to fostering a safer and healthier environment for all residents of Wellington County

Crime Stoppers Guelph Wellington (CSGW)

Crime Stoppers Guelph Wellington (CSGW) continues to focus on Cyber Safety as demand from schools grows as word gets out. Additionally, interest in 5 Tips 5 Ideas 5 Signs for parents and guardians has increased as well.

As we move into March (Fraud Prevention Awareness Month) there is increase interest in Fraud Talk, our fraud prevention presentation delivered in partnership with Victim Services Wellington.

Thanks to Wellington County OPP, we are participating in the 3rd annual Lights and Sirens event on March 22nd in Elora. This is a wonderful community event in partnership with Centre Wellington Fire Rescue and CW Food Bank. We look forward hosting a 50/50 draw to once again offer a fundraising component to our awareness on that date.

CSGW has reestablished a connection with Erin Radio. This means we now have a standing appointment to connect with East Wellington residents on the morning show.

The Board has had interest from younger volunteers, mostly from the University of Guelph. This is a great opportunity to tap into a key demographic within our community.

Additional events are being planned for the spring, including the annual mulch sales in Guelph and Mount Forest. More details on new events will be available next month.



Court

Supervisor: Sergeant Shaugn Rogers

Wellington County Court Bureau highlights:

- Agreement made with Guelph Police Service to have all weekday bails attend “in-person” at 36 Wyndham Street. This alleviates the need to continue “virtual” bail hearings from the detachment.
- Reviewing and clarifying current practices with regards to property seizures and ensuring we obtain instructions or forfeiture orders to deal with that property at the completion of court proceedings.
- Training conducted with Special Constables in Offender Management and Apprehension Program, compliance checks on repeat offenders, warrant apprehensions and Immigration. This was in conjunction with the Bail Support Team and joint efforts of the Canadian Border Services Agency.
- Streamlined current disclosure procedures with provincial prosecutions with regards to redacting audio statements and written statement summaries.
- Reviewing current backlog of accused persons who have failed to show for Criminal print dates and issuing warrants where necessary.



Personnel & Acknowledgements

On February 28, 2025 Wellington County OPP Staff Sergeant Nigel Heels received his Staff Sergeant badge from Superintendent Shawn Nash. Congratulations to Staff Sergeant Nigel Heels on the well deserved promotion!



Left to Right: Inspector Stephen Thomas, Staff Sergeant Nigel Heels, Superintendent Shawn Nash

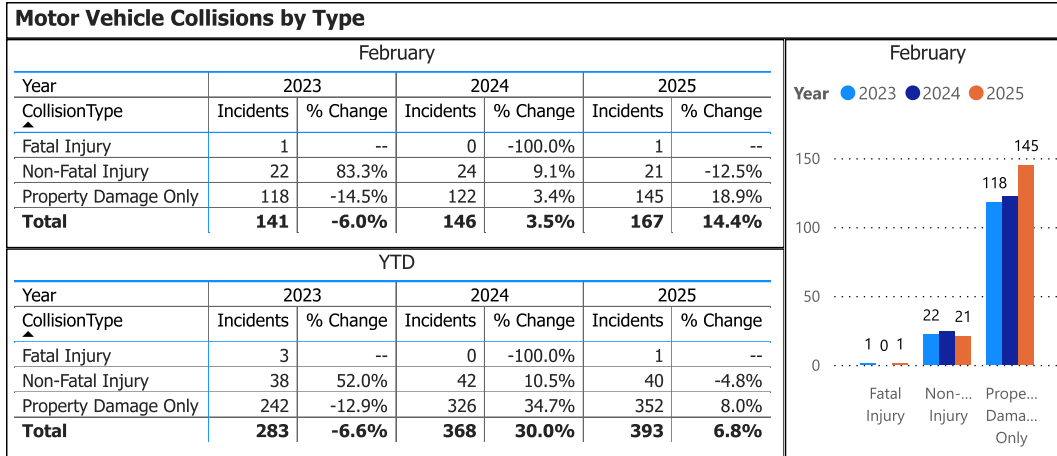
Report Summary

It was a busy time of year at the Wellington County OPP. With Mother Nature blasting us with her winter cold, we also saw a few days of extremely heavy snowfall. Officers were kept busy with motor vehicle collisions and road closures. Officers were also conducting RIDE spot checks and taking to the trails on snowmobiles. Our specialty units were also busy conducting drug investigations, sexual assault and fraud investigations and continuing the Offender Management & Apprehension Program. But despite the extra calls for service that come with winter weather Wellington County OPP was up to the task and ready to respond to weather related incidents and our regular call volume.

As we move into, hopefully, more spring like weather; Wellington County OPP wants to remind everyone that winter weather and road conditions are not quite behind us yet. Please drive according to the weather conditions, wear your seatbelt and keep those snow tires on for just a little bit longer. And again, please be mindful around bodies of water including rivers, lakes and streams at this time of year. Melting snow and broken ice can be extremely dangerous, and with the heavy rainfall expected at the start of March this hazard will only increase in intensity. Keep children, pets and yourself away from the water, it only takes one misstep for a tragedy to occur.



OPP Detachment Board Report Collision Reporting System February 2025



Data source (Collision Reporting System) date:
03-Mar-2025

Detachment: 6T - WELLINGTON COUNTY (Centre Wellington)
Location code(s): 6T00 - WELLINGTON COUNTY (Centre Wellington), 6T10 - WELLINGTON COUNTY (South Wellington), 6T40 - WELLINGTON COUNTY (North Wellington)

Area(s): ALL
Data source date:
03-Mar-2025

Report Generated on:
05-Mar-2025 8:46:17 AM

OPP Detachment Board Report Collision Reporting System February 2025

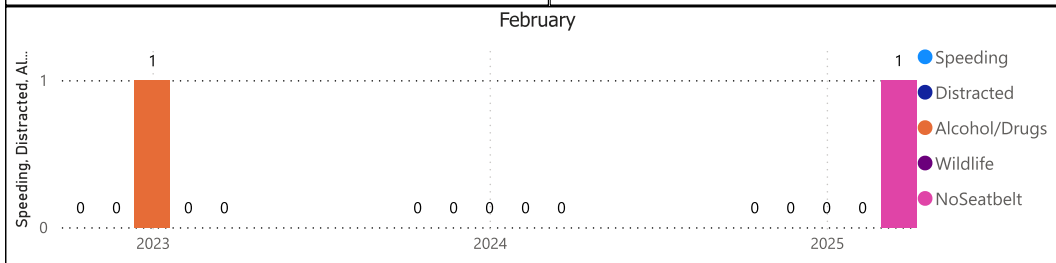
Fatalities in Detachment Area - Incidents									
February									
Type	Motor Vehicle			Motorized Snow Vehicle			Off-Road Vehicle		
Year	Alcohol/Drugs	Incidents	% Change	Alcohol/Drugs	Incidents	% Change	Alcohol/Drugs	Incidents	% Change
2023	1	1	--	0	0	--	0	0	--
2024	0	0	-100.0%	0	0	--	0	0	--
2025	0	1	--	0	0	--	0	0	--

YTD									
Type	Motor Vehicle			Motorized Snow Vehicle			Off-Road Vehicle		
Year	Alcohol/Drugs	Incidents	% Change	Alcohol/Drugs	Incidents	% Change	Alcohol/Drugs	Incidents	% Change
2023	2	3	--	0	0	--	0	0	--
2024	0	0	-100.0%	0	0	--	0	0	--
2025	0	1	--	0	0	--	0	0	--

Fatalities in Detachment Area - Persons Killed							
February							
Type	Motor Vehicle		Motorized Snow Vehicle		Off-Road Vehicle		
Year	Persons Killed	% Change	Persons Killed	% Change	Persons Killed	% Change	
2023	1	--	0	--	0	--	
2024	0	-100.0%	0	--	0	--	
2025	1	--	0	--	0	--	

YTD							
Type	Motor Vehicle		Motorized Snow Vehicle		Off-Road Vehicle		
Year	Persons Killed	% Change	Persons Killed	% Change	Persons Killed	% Change	
2023	3	--	0	--	0	--	
2024	0	-100.0%	0	--	0	--	
2025	1	--	0	--	0	--	

Primary Causal Factors in Fatal Motor Vehicle Collisions						
	February			YTD		
	2023	2024	2025	2023	2024	2025
Speeding	0	0	0	0	0	0
Speeding % Change	--	--	--	--	--	--
Distracted	0	0	0	0	0	0
Distracted % Change	--	--	--	--	--	--
Alcohol/Drugs	1	0	0	2	0	0
Alcohol/Drugs % Change	--	-100.0%	--	--	-100.0%	--
Wildlife	0	0	0	0	0	0
Wildlife % Change	--	--	--	--	--	--
NoSeatbelt	0	0	1	0	0	1
NoSeatbelt YoY%	--	--	--	--	--	--



Data source (Collision Reporting System) date:
03-Mar-2025

Detachment: 6T - WELLINGTON COUNTY (Centre Wellington)

Location code(s): 6T00 - WELLINGTON COUNTY (Centre Wellington), 6T10 - WELLINGTON COUNTY (South Wellington), 6T40 - WELLINGTON COUNTY (North Wellington)

Area(s): ALL

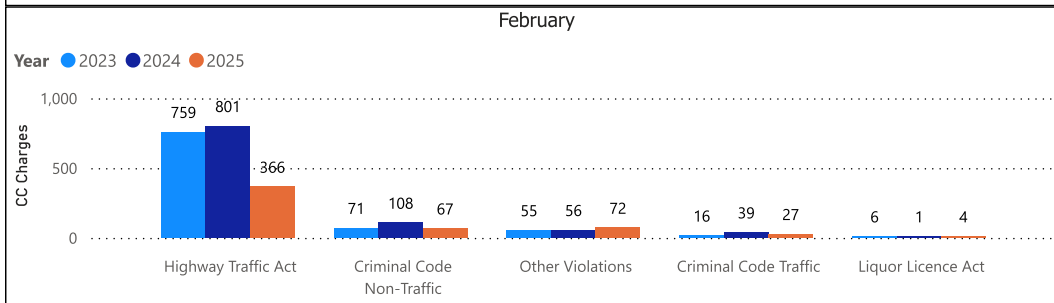
Data source date:
03-Mar-2025

Report Generated on:
05-Mar-2025 8:46:17 AM

OPP Detachment Board Report Records Management System February 2025

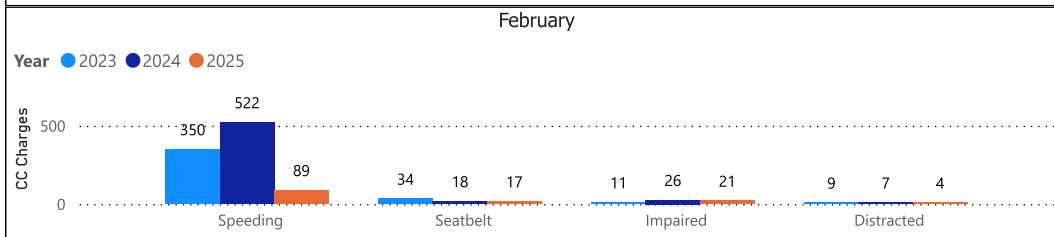
Criminal Code and Provincial Statute Charges Laid						
February						
Year	2023		2024		2025	
ChargeCategory1	Offence Count	% Change	Offence Count	% Change	Offence Count	% Change
Criminal Code Non-Traffic	71	31.5%	108	52.1%	67	-38.0%
Criminal Code Traffic	16	-59.0%	39	143.8%	27	-30.8%
Highway Traffic Act	759	141.0%	801	5.5%	366	-54.3%
Liquor Licence Act	6	20.0%	1	-83.3%	4	300.0%
Other Violations	55	-16.7%	56	1.8%	72	28.6%
Total	907	89.4%	1,005	10.8%	536	-46.7%

YTD						
Year	2023		2024		2025	
ChargeCategory1	Offence Count	% Change	Offence Count	% Change	Offence Count	% Change
Criminal Code Non-Traffic	172	14.7%	248	44.2%	151	-39.1%
Criminal Code Traffic	38	-35.6%	74	94.7%	54	-27.0%
Highway Traffic Act	1,334	89.0%	1,438	7.8%	843	-41.4%
Liquor Licence Act	10	0.0%	5	-50.0%	9	80.0%
Other Violations	100	-20.6%	112	12.0%	147	31.3%
Total	1,654	57.4%	1,877	13.5%	1,204	-35.9%



Traffic Related Charges						
February						
Year	2023		2024		2025	
ChargeCategory2	Offence Count	% Change	Offence Count	% Change	Offence Count	% Change
Speeding	350	128.8%	522	49.1%	89	-83.0%
Seatbelt	34	325.0%	18	-47.1%	17	-5.6%
Impaired	11	-59.3%	26	136.4%	21	-19.2%
Distracted	9	28.6%	7	-22.2%	4	-42.9%

YTD						
Year	2023		2024		2025	
ChargeCategory2	Offence Count	% Change	Offence Count	% Change	Offence Count	% Change
Speeding	628	73.0%	911	45.1%	230	-74.8%
Seatbelt	55	111.5%	24	-56.4%	44	83.3%
Impaired	26	-29.7%	48	84.6%	42	-12.5%
Distracted	13	-18.8%	15	15.4%	15	0.0%



Detachment: 6T - WELLINGTON COUNTY (Centre Wellington)

Location code(s): 6T00 - WELLINGTON COUNTY (Centre Wellington), 6T10 - WELLINGTON COUNTY (South Wellington), 6T40 - WELLINGTON COUNTY (North Wellington)

Area(s): ALL

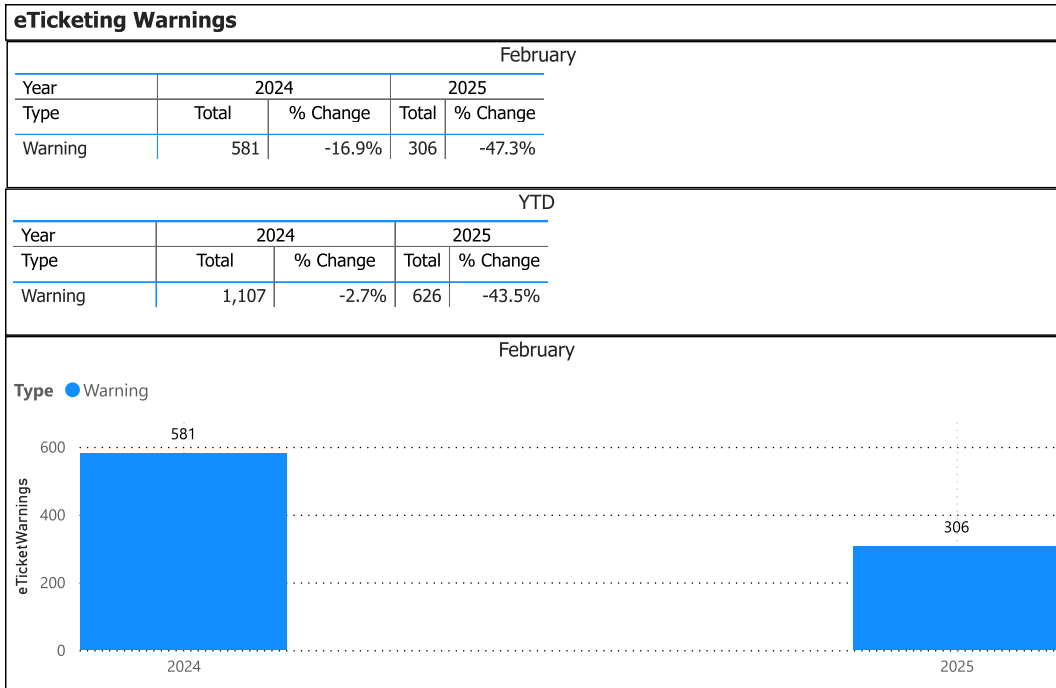
Data source date:

3-Mar-25

Report Generated on:

05-Mar-2025 8:46:17 AM

**OPP Detachment Board Report
Records Management System
February 2025**



Note: The eTicketing system was not fully implemented until the end of 2022, therefore data is only available beginning in 2023. % Change in 2023 may appear higher in this report due to the incomplete 2022 data.

Detachment: 6T - WELLINGTON COUNTY (Centre Wellington)

Location code(s): 6T00 - WELLINGTON COUNTY (Centre Wellington), 6T10 - WELLINGTON COUNTY (South Wellington), 6T40 - WELLINGTON COUNTY (North Wellington)

Area(s): ALL

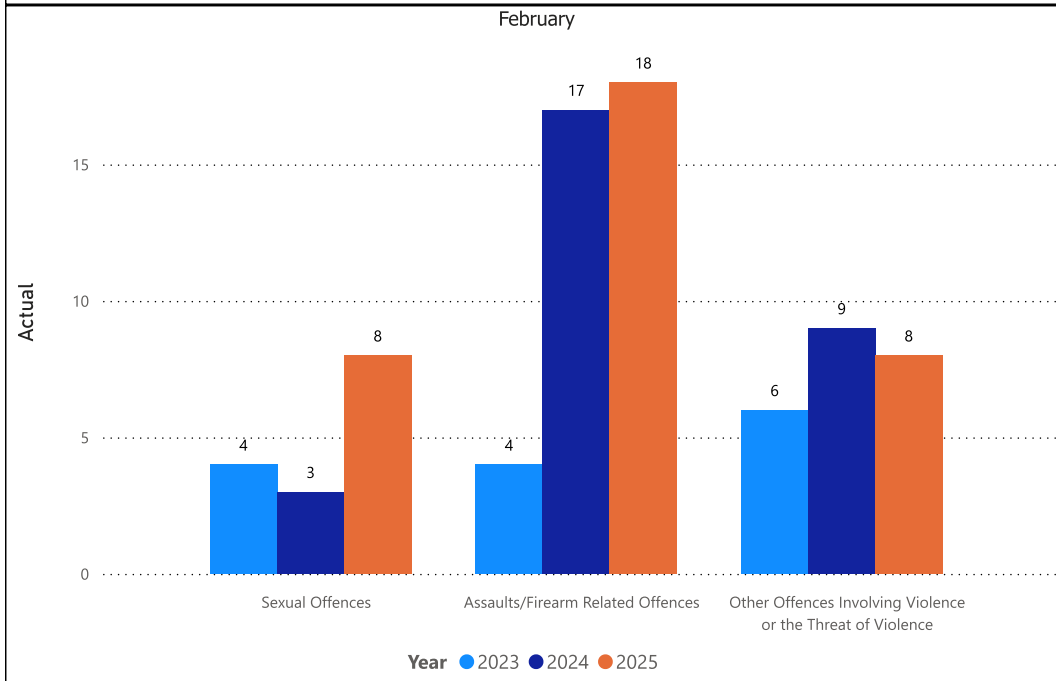
Data source date:
3-Mar-25

Report Generated on:
05-Mar-2025 8:52:04 AM

OPP Detachment Board Report Records Management System February 2025

Violent Crime						
February						
Year	2023		2024		2025	
ViolationGrp	Actual	% Change	Actual	% Change	Actual	% Change
Homicides	0	--	0	--	0	--
Other Offences Causing Death	0	--	0	--	0	--
Attempted Murder	0	--	0	--	0	--
Sexual Offences	4	0.0%	3	-25.0%	8	166.7%
Assaults/Firearm Related Offences	4	0.0%	17	325.0%	18	5.9%
Offences Resulting in the Deprivation of Freedom	0	--	0	--	0	--
Robbery	0	--	0	--	0	--
Other Offences Involving Violence or the Threat of Violence	6	-62.5%	9	50.0%	8	-11.1%
Offences in Relation to Sexual Services	0	--	0	--	0	--
Total	14	-41.7%	29	107.1%	34	17.2%

YTD						
Year	2023		2024		2025	
ViolationGrp	Actual	% Change	Actual	% Change	Actual	% Change
Homicides	1	--	0	-100.0%	0	--
Other Offences Causing Death	0	--	0	--	0	--
Attempted Murder	0	--	0	--	0	--
Sexual Offences	8	0.0%	9	12.5%	18	100.0%
Assaults/Firearm Related Offences	22	120.0%	32	45.5%	35	9.4%
Offences Resulting in the Deprivation of Freedom	0	--	1	--	0	-100.0%
Robbery	2	--	1	-50.0%	0	-100.0%
Other Offences Involving Violence or the Threat of Violence	18	-35.7%	18	0.0%	25	38.9%
Offences in Relation to Sexual Services	0	--	0	--	0	--
Total	51	10.9%	61	19.6%	78	27.9%



Detachment: 6T - WELLINGTON COUNTY (Centre Wellington)

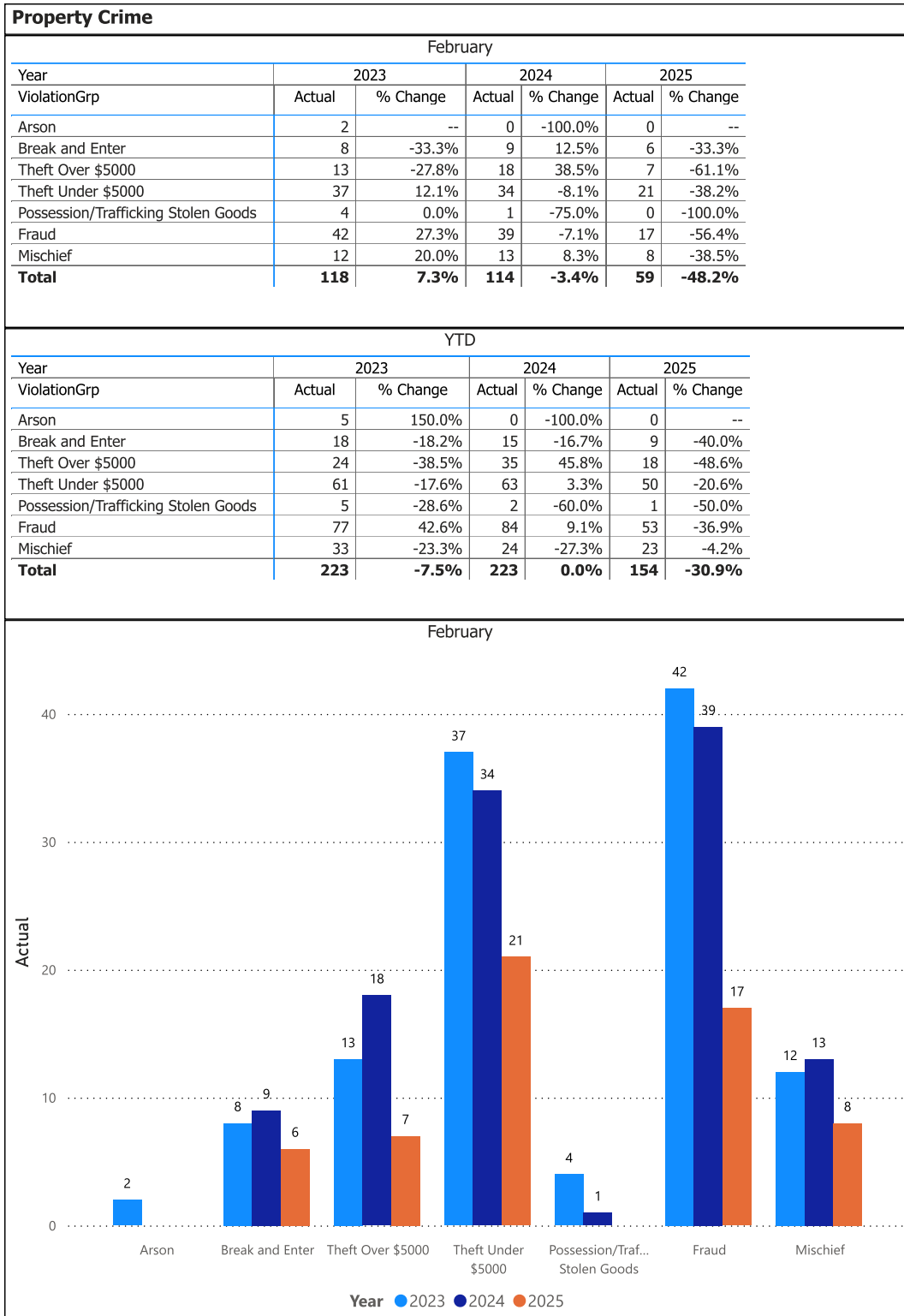
Location code(s): 6T00 - WELLINGTON COUNTY (Centre Wellington), 6T10 - WELLINGTON COUNTY (South Wellington), 6T40 - WELLINGTON COUNTY (North Wellington)

Area(s): ALL

Data source date:
03-Mar-2025

Report Generated on:
05-Mar-2025 8:46:17 AM

OPP Detachment Board Report Records Management System February 2025



Detachment: 6T - WELLINGTON COUNTY (Centre Wellington)
 Location code(s): 6T00 - WELLINGTON COUNTY (Centre Wellington), 6T10 - WELLINGTON COUNTY (South Wellington), 6T40 - WELLINGTON COUNTY (North Wellington)

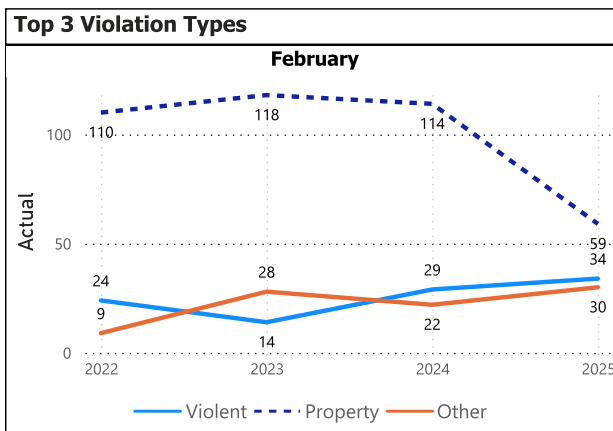
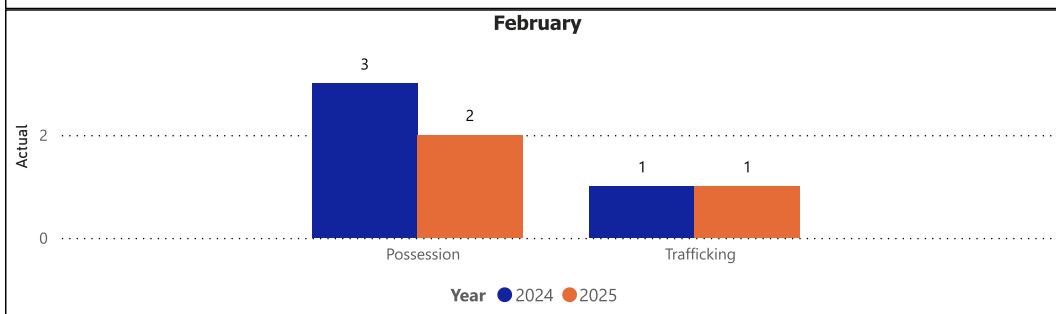
Area(s): ALL
 Data source date:
 03-Mar-2025

Report Generated on:
 05-Mar-2025 8:46:17 AM

OPP Detachment Board Report Records Management System February 2025

Drug Crime						
February						
Year	2023		2024		2025	
ViolationGrp	Actual	% Change	Actual	% Change	Actual	% Change
Possession	0	-100.0%	3	--	2	-33.3%
Trafficking	0	-100.0%	1	--	1	0.0%
Importation & Production	0	--	0	--	0	--
Cannabis Possession	0	--	0	--	0	--
Cannabis Distribution	0	--	0	--	0	--
Cannabis Sale	0	--	0	--	0	--
Cannabis Importation & Exportation	0	--	0	--	0	--
Cannabis Production	0	--	0	--	0	--
Other Cannabis Violations	0	--	0	--	0	--
Total	0	-100.0%	4	--	3	-25.0%

YTD						
Year	2023		2024		2025	
ViolationGrp	Actual	% Change	Actual	% Change	Actual	% Change
Possession	3	0.0%	4	33.3%	2	-50.0%
Trafficking	0	-100.0%	1	--	1	0.0%
Importation & Production	0	--	0	--	0	--
Cannabis Possession	0	--	0	--	0	--
Cannabis Distribution	0	--	0	--	0	--
Cannabis Sale	0	--	0	--	0	--
Cannabis Importation & Exportation	0	--	0	--	0	--
Cannabis Production	1	--	0	-100.0%	0	--
Other Cannabis Violations	0	--	0	--	0	--
Total	4	-42.9%	5	25.0%	3	-40.0%



Top 5 Violation Groups					
February					
ViolationGrp	2022	2023	2024	2025	Total
Fraud	33	42	39	17	131
Theft Under \$5000	33	37	34	21	125
Failure to Comply	6	21	15	25	67
Theft Over \$5000	18	13	18	7	56
Provincial Statutes	12	13	12	8	45

Detachment: 6T - WELLINGTON COUNTY (Centre Wellington)

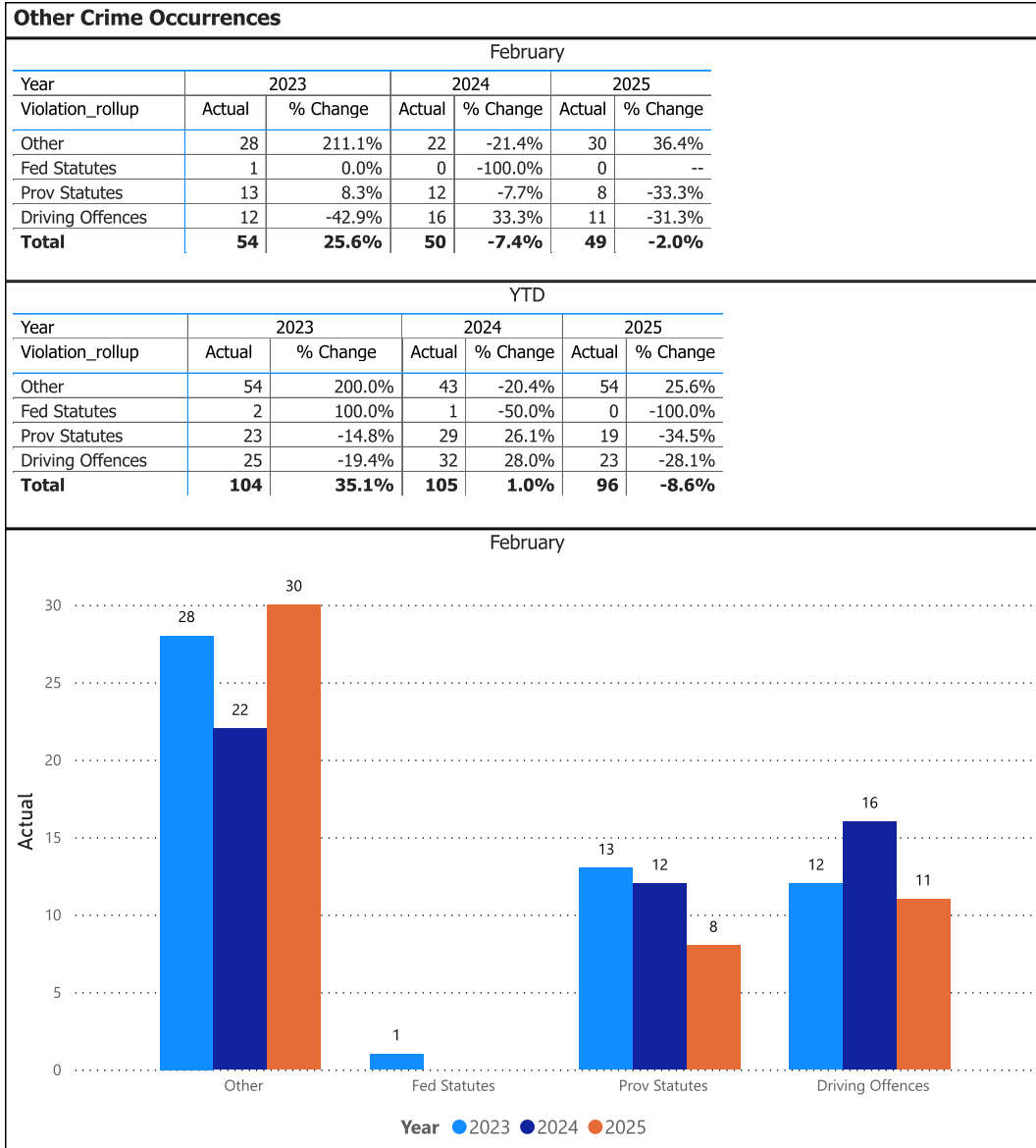
Location code(s): 6T00 - WELLINGTON COUNTY (Centre Wellington), 6T10 - WELLINGTON COUNTY (South Wellington), 6T40 - WELLINGTON COUNTY (North Wellington)

Area(s): ALL

Data source date:
03-Mar-2025

Report Generated on:
05-Mar-2025 8:46:17 AM

OPP Detachment Board Report Records Management System February 2025



Detachment: 6T - WELLINGTON COUNTY (Centre Wellington)

Location code(s): 6T00 - WELLINGTON COUNTY (Centre Wellington), 6T10 - WELLINGTON COUNTY (South Wellington), 6T40 - WELLINGTON COUNTY (North Wellington)

Area(s): ALL

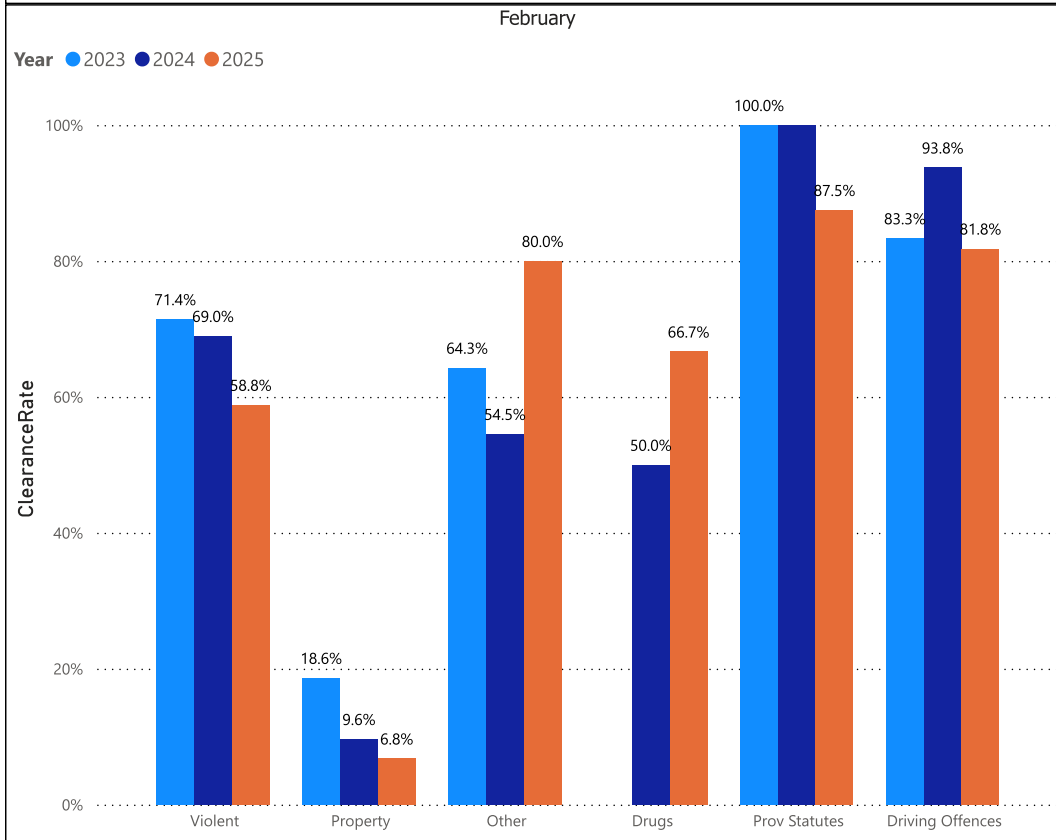
Data source date:
03-Mar-2025

Report Generated on:
05-Mar-2025 8:46:17 AM

OPP Detachment Board Report Records Management System February 2025

Clearance Rate						
February						
Year	2023		2024		2025	
	%	% Change	%	% Change	%	% Change
Violent	71.4%	185.7%	69.0%	-3.4%	58.8%	-14.7%
Property	18.6%	2.5%	9.6%	-48.2%	6.8%	-29.7%
Other	64.3%	44.6%	54.5%	-15.2%	80.0%	46.7%
Drugs		-100.0%	50.0%	--	66.7%	33.3%
Fed Statutes	0.0%	-100.0%		--		
Prov Statutes	100.0%	9.1%	100.0%	0.0%	87.5%	-12.5%
Driving Offences	83.3%	-7.9%	93.8%	12.5%	81.8%	-12.7%

YTD						
Year	2023		2024		2025	
	%	% Change	%	% Change	%	% Change
Violation_rollup						
Violent	68.6%	125.5%	68.9%	0.3%	65.4%	-5.0%
Property	15.2%	2.1%	11.7%	-23.5%	5.2%	-55.4%
Other	70.4%	81.0%	55.8%	-20.7%	75.9%	36.0%
Drugs	75.0%	5.0%	60.0%	-20.0%	66.7%	11.1%
Fed Statutes	50.0%	-50.0%	100.0%	100.0%		-100.0%
Prov Statutes	100.0%	3.8%	93.1%	-6.9%	94.7%	1.8%
Driving Offences	88.0%	-2.6%	93.8%	6.5%	87.0%	-7.2%



Detachment: 6T - WELLINGTON COUNTY (Centre Wellington)

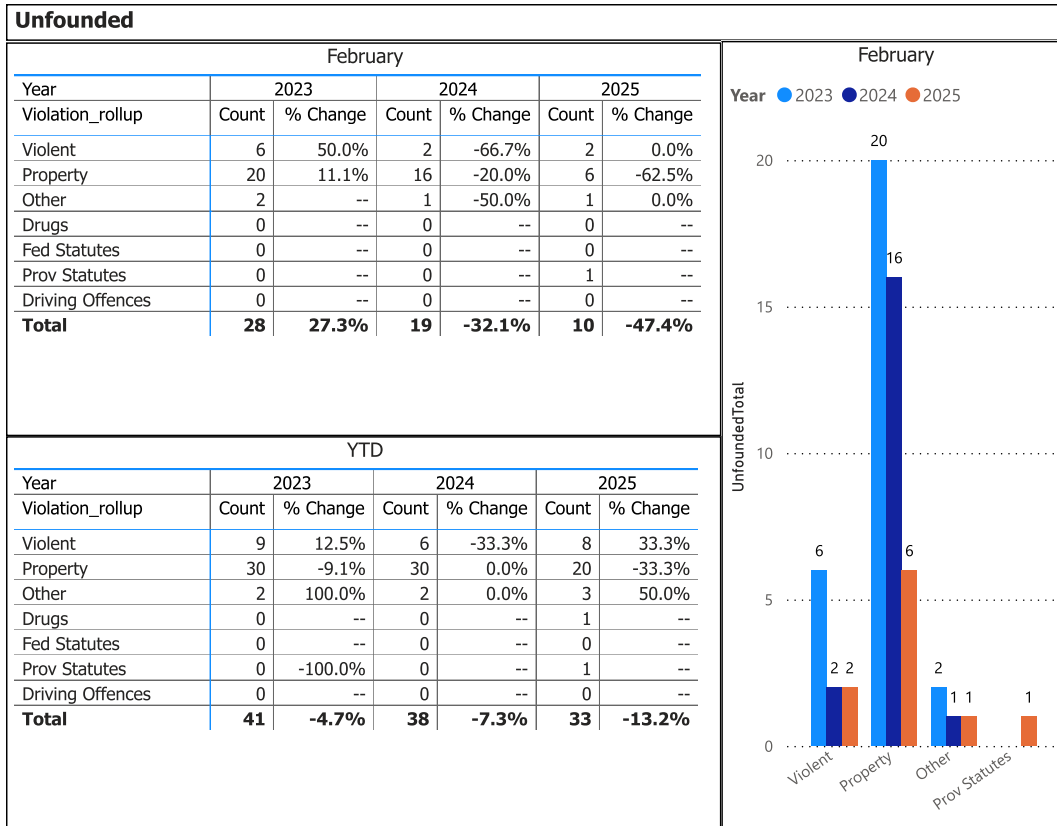
Location code(s): 6T00 - WELLINGTON COUNTY (Centre Wellington), 6T10 - WELLINGTON COUNTY (South Wellington), 6T40 - WELLINGTON COUNTY (North Wellington)

Area(s): ALL

Data source date:
03-Mar-2025

Report Generated on:
05-Mar-2025 8:46:17 AM

OPP Detachment Board Report Records Management System February 2025



Detachment: 6T - WELLINGTON COUNTY (Centre Wellington)

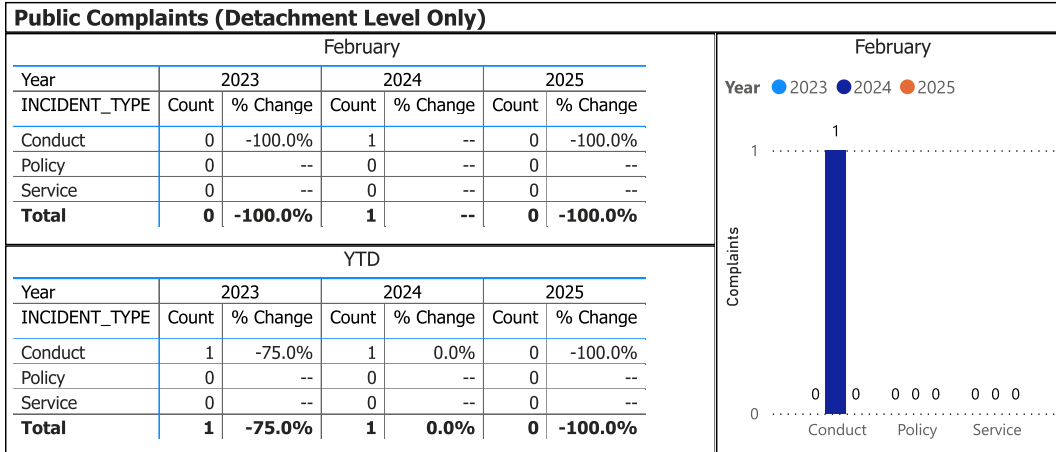
Location code(s): 6T00 - WELLINGTON COUNTY (Centre Wellington), 6T10 - WELLINGTON COUNTY (South Wellington), 6T40 - WELLINGTON COUNTY (North Wellington)

Area(s): ALL

Data source date:
03-Mar-2025

Report Generated on:
05-Mar-2025 8:46:17 AM

OPP Detachment Board Report Records Management System February 2025



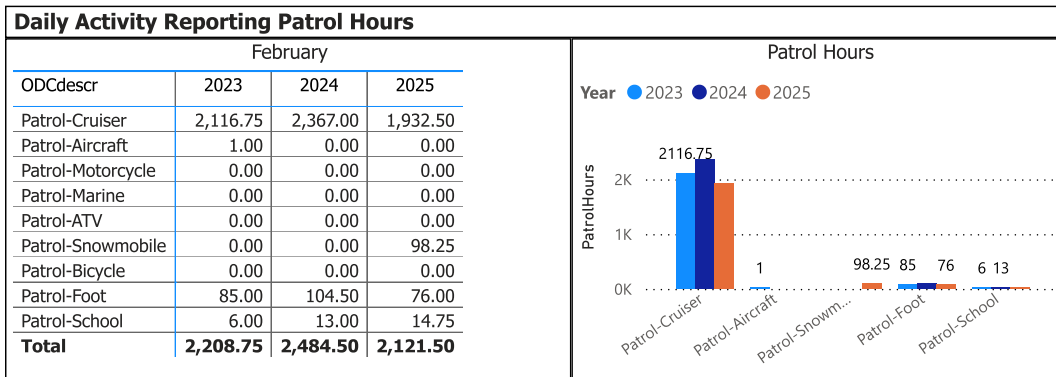
Data source: RMS Data Feed

Ontario Provincial Police, Professional Standards Bureau Commander Reports - File Manager System

Data source date:

03-Mar-2025

Daily Activity Reporting



Data source (Daily Activity Reporting System) date:

03-Mar-2025

Detachment: 6T - WELLINGTON COUNTY (Centre Wellington)

Location code(s): 6T00 - WELLINGTON COUNTY (Centre Wellington), 6T10 - WELLINGTON COUNTY (South Wellington), 6T40 - WELLINGTON COUNTY (North Wellington)

Data source date:

03-Mar-2025

Report Generated on:

05-Mar-2025 8:46:17 AM

OPP Detachment Board Report Records Management System February 2025

Youth Charges by Disposition Type			
February			
Disposition_Type	2023	2024	2025
Bail	0	0	0
Conviction	0	0	0
Diversion	3	1	0
NonConviction	0	0	0
NotAccepted	0	0	0
POATicket	0	0	1
Total	3	1	1

YTD			
Disposition_Type	2023	2024	2025
Bail	0	0	0
Conviction	1	0	0
Diversion	4	1	2
NonConviction	3	3	0
NotAccepted	0	0	0
POATicket	0	0	1
Total	8	4	3

Year	Sum of ChargeCount	Disposition Type
2023	3	Diversion
2024	1	Diversion
2025	1	POATicket

February

● Diversion ● POATicket

Youth Charges by Disposition and Occurrence Type						
February						
Year	2025					Total
OccType	Conviction	Diversion	NonConviction	NotAccepted	POATicket	
eTicket - Person	0	0	0	0	1	1
Total	0	0	0	0	1	1

YTD						
Year	2025					Total
OccType	Conviction	Diversion	NonConviction	NotAccepted	POATicket	
eTicket - Person	0	0	0	0	1	1
Sexual assault	0	2	0	0	0	2
Total	0	2	0	0	1	3

The tables and chart on this page present summarized youth charges by disposition and occurrence type that have been recorded in the OPP Niche RMS application. Of note... the Niche data sourced for this report page only lists youth charges that have had a disposition type entered against them. Therefore, please be aware that the counts of youth charges entries on this report page are under stating the potential sum of youth charges that are in OPP Niche RMS.

Detachment: 6T - WELLINGTON COUNTY (Centre Wellington)

Location code(s): 6T00 - WELLINGTON COUNTY (Centre Wellington), 6T10 - WELLINGTON COUNTY (South Wellington), 6T40 - WELLINGTON COUNTY (North Wellington)

Area(s): ALL

Data source date:
03-Mar-2025

Report Generated on:
05-Mar-2025 8:54:08 AM

OPP Detachment Board Report Records Management System February 2025

February		
Year	Occurrences	Unfounded
2023	84	2
2024	65	1
2025	96	1

YTD		
Year	Occurrences	Unfounded
2023	154	2
2024	146	2
2025	179	2

February		
Year	2025	
OccurrenceType	Occurrences	Unfounded
Ambulance Assistance	2	0
Assault	1	0
Attempt or threat of suicide	15	0
Crisis Call Diversion	1	0
Cyber Enabled Crime - Online Fraud	1	0
Domestic dispute	14	0
Family dispute	6	0
Impaired/over 80	2	0
Landlord tenant problem	2	0
Mental health act	41	1
Missing person	1	0
Neighbour dispute	3	0
Person Well-Being Check	1	0
Police information	1	0
Sexual assault	2	0
Suspicious person	1	0
Trouble with youth	1	0
Unwanted person	1	0
Total	96	1

Detachment: 6T - WELLINGTON COUNTY (Centre Wellington)
 Location code(s): 6T00 - WELLINGTON COUNTY (Centre Wellington), 6T10 - WELLINGTON COUNTY (South Wellington), 6T40 - WELLINGTON COUNTY (North Wellington)

Area(s): ALL
 Data source date:
 03-Mar-2025

Report Generated on:
 05-Mar-2025 8:46:17 AM

OPP Detachment Board Report Records Management System February 2025

Overdose Occurrences							
February			YTD				
Fatal	2023	2024	2025	Fatal	2023	2024	2025
<input type="checkbox"/> Fatal	0	0	0	<input type="checkbox"/> Fatal	0	0	0
non-opioid overdose	0	0	0	non-opioid overdose	0	0	0
opioid overdose	0	0	0	opioid overdose	0	0	0
<input type="checkbox"/> non-Fatal	0	1	0	<input type="checkbox"/> non-Fatal	0	2	0
non-opioid overdose	0	0	0	non-opioid overdose	0	1	0
opioid overdose	0	1	0	opioid overdose	0	1	0
Total	0	1	0	Total	0	2	0

Fatal Overdose Occurrences	Non-Fatal Overdose Occurrences
February	February
<p>● non-opioid overdose ● opioid overdose</p>	<p>● non-opioid overdose ● opioid overdose</p>

Detachment: 6T - WELLINGTON COUNTY (Centre Wellington)

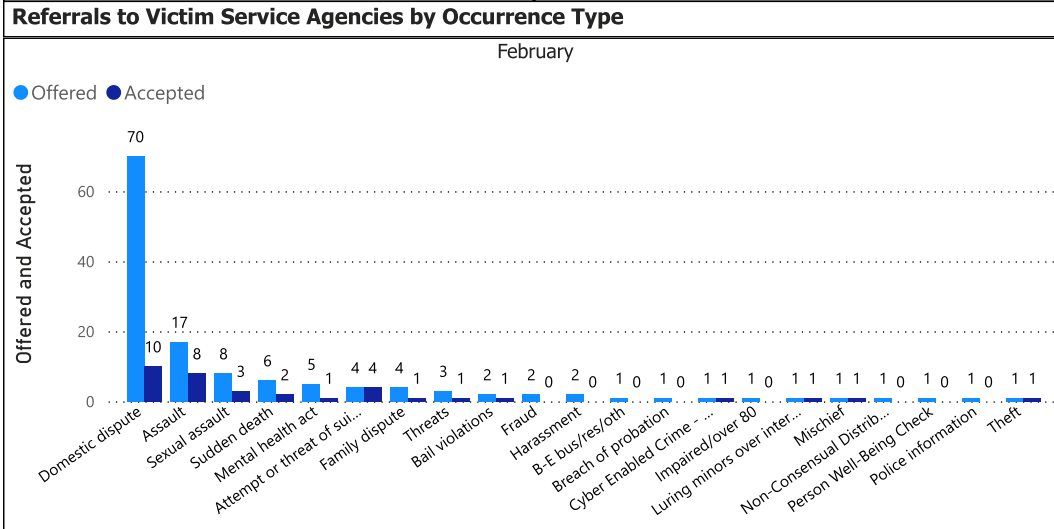
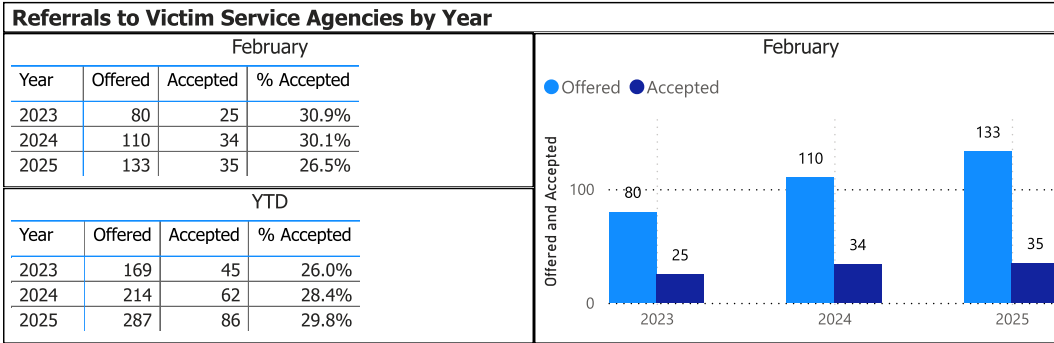
Location code(s): 6T00 - WELLINGTON COUNTY (Centre Wellington), 6T10 - WELLINGTON COUNTY (South Wellington), 6T40 - WELLINGTON COUNTY (North Wellington)

Area(s): ALL

Data source date:
03-Mar-2025

Report Generated on:
05-Mar-2025 8:46:17 AM

OPP Detachment Board Report Records Management System February 2025



Referrals Accepted (%) by Age Group

February			
PersonAgeRange	2023	2024	2025
	8.2%	9.3%	
11 - 16	100.0%		33.3%
17 - 25	100.0%	100.0%	26.1%
26 - 45	100.0%	100.0%	23.8%
46 - 65	100.0%	90.0%	37.5%
6 - 10			50.0%
Over 65			9.1%
Under 6	100.0%		

Referrals Not Offered

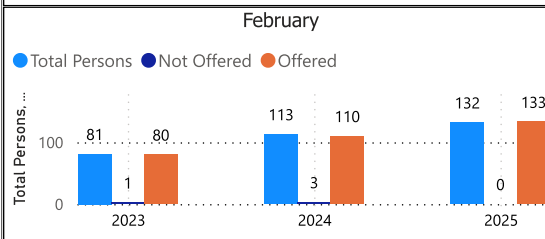
February			
ServicesNotOfferedReason	2023	2024	2025
	0	0	0
	0	0	0
Victim deceased or unable to respond	0	3	0
Victim resides outside Ontario	1	0	0

YTD

PersonAgeRange	2023	2024	2025
	6.6%	7.9%	
11 - 16	100.0%		41.2%
17 - 25	100.0%	100.0%	29.7%
26 - 45	100.0%	95.7%	25.4%
46 - 65	100.0%	84.2%	29.3%
6 - 10			60.0%
Over 65	100.0%	100.0%	34.8%
Under 6	100.0%		100.0%

YTD

ServicesNotOfferedReason	2023	2024	2025
	0	0	0
	0	0	1
Victim deceased or unable to respond	3	4	2
Victim resides outside Ontario	1	0	0



Detachment: 6T - WELLINGTON COUNTY (Centre Wellington)

Location code(s): 6T00 - WELLINGTON COUNTY (Centre Wellington), 6T10 - WELLINGTON COUNTY (South Wellington), 6T40 - WELLINGTON COUNTY (North Wellington)

Area(s): ALL

Data source date:
03-Mar-2025

Report Generated on:
05-Mar-2025 8:46:17 AM

Contacts

In an emergency DIAL 911

You can also call
1 888 310 1122
1 888 310 1133 (TTY)
Anywhere in Ontario, 24-hour toll free

Non-emergency calls

Please call
1 888 310 1122
1 888 310 1133 (TTY)
Anywhere in Ontario, 24-hour toll free

County of Wellington OPP Detachments

Centre Wellington Operations Centre

371 Charles Allan Way,
Fergus, ON N1M 2W3
Non-Emergency 519-846-5930
Fax 519-846-5460

South Wellington Operations Centre

5145 Wellington Road 27,
Rockwood, ON N0B 2K0
Non-Emergency 519-856-1506
Fax 519-846-2327

North Wellington Operations Centre

6725 Wellington Road 109,
Palmerston, ON N0G 2P0
Non-Emergency 519-343-5770
Fax 519-343-5780

OPP General Headquarters

Ontario Provincial Police
General Headquarters
Lincoln M. Alexander Building
777 Memorial Avenue
Orillia, ON
L3V 7V3

General inquiries: 705 329-6111
8:00 am to 4:00 pm, Monday to Friday

-  www.opp.ca
-  [Report a Crime Online](#)
-  [News releases](#)
-  [Upcoming events](#)
-  [Social media](#)



© 2025 Ontario Provincial Police – All rights reserved