



**Wellington O.P.P.  
Detachment Board Report**

**December 2024**

Detachment Commander:  
Inspector Steve Thomas

# From the Detachment Commander

As we move deeper into winter we can expect colder weather, snow, and hazardous driving conditions. Please remember to drive according to the weather conditions. This means slowing down when roads are snow covered and icy or when visibility is low. Wear your seatbelt, they save lives! Pack an emergency kit with water, warm clothes, blankets, and extra food. Install those winter tires if you have not done so already. And as always, please do not drive impaired. The small choices we make before heading out on the road can impact not only our own life, but our families and our fellow community members. Your preparation and attention to detail can save a life.

With the Holiday season behind us, I wanted to thank all the officers, auxiliary members and volunteers that assisted with the various Santa Claus Parades and community events across the County. The hours you put in to make these events a success and the security you provide allow members of the public to enjoy these events with their families in a safe and festive spirit.

I want to wish everyone in Wellington County a Happy New Year, and a safe 2025.



Inspector Steve Thomas  
519-846-5930

Index	
Crime	3
Traffic	5
Community Response	7
Court	10
Personnel & Acknowledgements	11
Report Summary	12
Statistical Summary	13



## Crime

---

### Crime Unit

Supervisor: Detective Sergeant, Mezie Huggins

During the month of November, the crime unit received several fraud complaints. These investigations take time with the investigator having to write judicial authorizations and review the contents obtained to further their investigation. This month after a lengthy investigation a crime unit member was able to arrest four suspects for a roughly \$300,000 fraud.

Crime unit members worked with front line members in the investigation and arrest of a domestic sexual assault. The male accused has been put forward for monitoring as a high-risk offender due to history.

This month members from the unit attended training at various training facilities for search warrant writing, criminal investigation, and investigating crimes against children. These courses assist our members in expanding their investigative expertise to better serve the community.

Detective Constable Dave Green left the unit after three years. Dave was the successful candidate in a competition. He leaves crime to join a unit which specializes in financial crimes. Congratulations Dave.



---

## Community Street Crime Unit

Supervisor: Detective Sergeant, Jeffrey Dudley

As part of our commitment to continuous learning, Community Street Crime Unit (CSCU) Members attended various training course and workshops within West Region. The officers bring back knowledge they can share with front line, and it has provided them with additional tools to utilize during their investigations.

CSCU executed a property related warrant in North Wellington. The accused broke into a trailer located on a rural property and stole several items including a TV. The suspect then used the victims Netflix account for several months. CSCU wrote several search warrants and used the information obtained to write another search warrant to enter the suspects home and seize the TV. As a result, CSCU recovered the stolen TV, and the accused was charged accordingly.

CSCU completed a presentation to Waterloo Region CAS. The purpose of the presentation was to provide safety information for CAS workers when completing home visits and dealing with individuals who suffer from dependency. The presentation was well received and provided CAS with important tools to keep them safe and informed. Wellington County CSCU conducts regular presentations to our community partners as part of an ongoing commitment to Community and Public safety.

CSCU conducted a property crime investigation related to an accused who smashed several windows of vehicles parked at a church in Perth County. The accused stole a vehicle using the keys stolen from one of the vehicles and was involved in an accident. CSCU wrote a search warrant to seize property the accused stole from victims at the church. As a result, several individuals received their personal property back and the accused was charged accordingly.

CSCU assisted Brant/Oxford in a multijurisdictional drug trafficking investigation. CSCU assisted executing one of several warrants being executed across southwestern Ontario. As a result, a large quantity of cocaine, methamphetamine, prescription pills, Canadian Currency and weapons were seized.

CSCU assisted frontline with a stolen vehicle occurrence in South Wellington. Officers received a call from a neighboring service indicating a stolen vehicle was located in Wellington County. Frontline members attended the location and contacted the owner of the property. CSCU and Frontline members located three stolen vehicles, and they were returned to the rightful owner.

CSCU assisted with a drug trafficking investigation in North Wellington to assist Grey/Bruce CSCU. Wellington County executed a warrant in North Wellington and seized a large quantity of cocaine and a prohibited device. As a result, several people were charged with various offences and this investigation reduced the availability of illicit drugs in Wellington County.

Wellington CSCU continues to prioritize local crime trends, the opioid crises and targeting local people identified in property thefts. CSCU members are committed to continuous learning and are attending training when time permits. CSCU has developed local training, mentoring initiatives for front line members to promote officer safety and enhance their local knowledge on the current drug and property crimes trends in the area.

## Traffic

### Traffic Management Unit

Supervisor: Sergeant Kevin Driscoll

### Black Cat Speed Monitoring Devices

	Study Length	Number of Vehicles	Recommended Enhanced Enforcement	Posted Speed Limit	85 <sup>th</sup> Percentile	Collision History (5 years)
<b>Location</b>						
1 <sup>st</sup> Line Elora	7 days	20,362	Yes	40	67	Nothing significant
<b>Location</b>						
St Andrew Street West b/w Garthshore and Anderson	7 days	Numbers to be obtained	Ongoing deployment			
<b>County Deployed</b>						
<b>Location</b>						
Wellington Rd 35 – Paddock Bridge)	7 days	37,347	No	80	94	Nothing significant
<b>Location</b>						
Wellington Rd 7 between County Rd 18 and SR 10	7 days	46,333	No	80	96	Nothing significant
<b>Location</b>						
Wellington Road 26 between Amalia and Allan Dr	7 days	19,627	No	50	70	Nothing significant
<b>Location</b>						
Wellington Rd 50 between 3rd and 5th Line	7 days	12,783	No	70	82	Nothing significant

### Enhanced Enforcement Program

Enhanced Enforcement is a focused traffic safety initiative which areas of concern are identified through various means and police conduct education and charge drivers who fail to follow the rules of the road. The goal is to reduce safety issues through visibility, presence, and enforcement.

Enhanced Enforcement protocols were rolled out on November 14, 2023. The following locations and charges are from November and the first half of December 2024.

Location	Charges
Indian Trail – This is now closed. Patrols to be continued.	38 PON and 23 Warn.
Wellington Road 50 – Now closed. Does not meet criteria	3 PON 1 warn
Lake Road – now closed. Patrols to be continued	19 PON 1 3-day suspension

---

Eighth Line W - Pilkington	9 PON
1 <sup>st</sup> Line - Elora	7 PON

### **Traffic Management Unit - Administration**

Members of the Wellington Detachment conducted over 60 RIDE spot checks across the County. The Festive RIDE campaign has also started with a launch on November 20th in the City of Guelph with Guelph Police.

Members issued a total of 1027 Provincial Offence Notices as well as an additional 633 warnings. Of these charges, members issue thirty stunt driving offences throughout the County.

PC Griffin and PC Campbell continue to be busy assisting MTO with various truck enforcement blitzes.

Wellington County completed a blitz on November 14th on Elmira Road with MTO, Guelph Police and Waterloo Regional Police. OPP officers conducted eleven inspections resulting in six motor vehicles being taken out of service and four licence plates being seized. A total of forty-two charges were laid, twenty-two warnings, 1 3-day drivers licence suspension and one driver being charged with driving while under suspension.

Traffic unit members assisted with many Remembrance Day services and Christmas Parades across the County.



## Community Response

---

### Community Response Unit

Supervisor: A/Sergeant Patrick Mullan

### Community Response Unit / Offender Management & Apprehension Program:

#### Offender Management & Apprehension Program

The members of the Community Response Unit continue facilitating the Offender Management & Apprehension Program. From November 1<sup>st</sup>, 2024, to December 11<sup>th</sup>, 2024, Wellington County OPP have executed forty-one warrants, in the same period, there were twenty-nine bail condition compliance checks on those in the community. There remain 199 active warrants.



### Community Safety and Services

Wednesday November 6<sup>th</sup>, 2024 was Take Your Kids to Work Day. Wellington County OPP supported Grade 9 students from both OPP personnel and County of Wellington Staff on an exhibition of equipment and an interactive 'show and tell' at the Centre Wellington Operations Centre in Aboyne

Community Response Members and Platoon Members continue to support Christmas Parades across the County. This year there were (11) such parades.



---

## Mental Health Liaison

Officer Watt hosted a virtual meeting with Grey County OPP on the MCRT/IMPACT Teams running in both counties. [Detachment Commander Debra ANDERSON and Grey Liaison officer Robert HANN] The purpose of the meeting was to share best practices; how tracking and follow up are conducted. Officer Watt remarked the following: "This was completed and productive. Contact information was shared between all parties as well as discussion regarding Best Practices. Grey County mimics our program and it is working out well."



## Media

In November, a recruiting event was held in the City of Guelph, alongside an awareness fair on addiction at Centre Wellington High School. Additionally, the Wellington County – Fergus Detachment organized and hosted the annual "Take Your Kids to Work Day," where (12) Grade 9 students participated in a half-day of activities and stations. The students also had the opportunity to learn from various units, including K9, Major Crime, Emergency Response, and Traffic Services.



Wellington County also sent six additional officers for media training in November to enhance the county's public engagement. Efforts were made to assist in the Winter Safety Detachment Board newsletter, and a social media video was created to inform the public about an upcoming heavy snowfall.



In December, two social media videos were produced, one involving Inspector Thomas on a holiday message / festive ride message, and the second was about winter driving safety tips for the county.

A "Coffee with a Cop" event is scheduled for December 13<sup>th</sup>, 2024, at Bearded Barista in Rockwood.

As of December 13<sup>th</sup>, (65) press releases were issued to local media partners, highlighting the ongoing efforts of officers in community partnerships, law enforcement, and combating impaired driving.

Wellington County OPP has participated in educational presentations on topics such as cyber safety, bullying prevention, and weapon safety and awareness. So far, our office has conducted (11) of these presentations, which has led to more requests for presentations. We already have (3) more schools scheduled for presentations in the beginning of 2025.

---

**IMPACT** (Integrated Mobile Police and Crisis Team)

**November 2024**

Individuals Served	Requests for Service	Live Calls with Police	Calls Diverted from Hospital
54	51	23	100%

**Auxiliary Unit**

Unit Commander: Auxiliary Staff Sergeant J. SWAN

Liaison: Provincial Constable Kyle Draves

Training this month consisted of a review of public-police interactions. The training had some good scenarios that we were able to discuss from the point of view of our role as Auxiliaries performing both patrol and community events. In personnel news, we welcomed two new recruits this month. We also lost one member who will be joining the OPP as a regular officer.

Auxiliary members attended a toy drive in Mount Forest this month in association with the Canadian Tire franchise. We also had members assist with Remembrance Day ceremonies throughout the county. Auxiliaries performed traffic control duties for Santa Claus parades in Erin and Elora.



---

## Court

Supervisor: Sergeant Shaugn Rogers

Wellington County Court Bureau highlights:

- Officer training was completed for newer officers with the POA prosecutor on the 13<sup>th</sup> of November – topics included providing testimony and what to expect during Provincial Offence court attendance. Additional resources were provided to all officers on expectations for synopsis writing and other reports to be included in Crown Briefs.
- Improving our ability to track new incoming court cases – avoiding having to prepare these files last minute where there are delays in disclosure. Also, addressed some staffing needs for a temporary increase in disclosure requests – reassigned some of the admin staff to assist with these requests.
- Conducted by-weekly meetings with court admin and special constables to clarify job duties and improve efficiencies.
- Continuing to improve our efforts in tracking the entry and removal of local wanted persons on a warrant database.
- Special Constables now monitoring all Part III POA and Part I POA trials and notifying our officers only when they are required – this allows frontline officers to continue to focus on other duties rather than waiting in a court room in the event they may be required on a trial date.



# Personnel & Acknowledgements

On November 14, 2024, Inspector Stephen Thomas presented Sergeant Kevin Detweiler with his new Sergeant badge at the Centre Wellington Operations Centre. Congratulations Kevin on your well deserved promotion.



# Report Summary

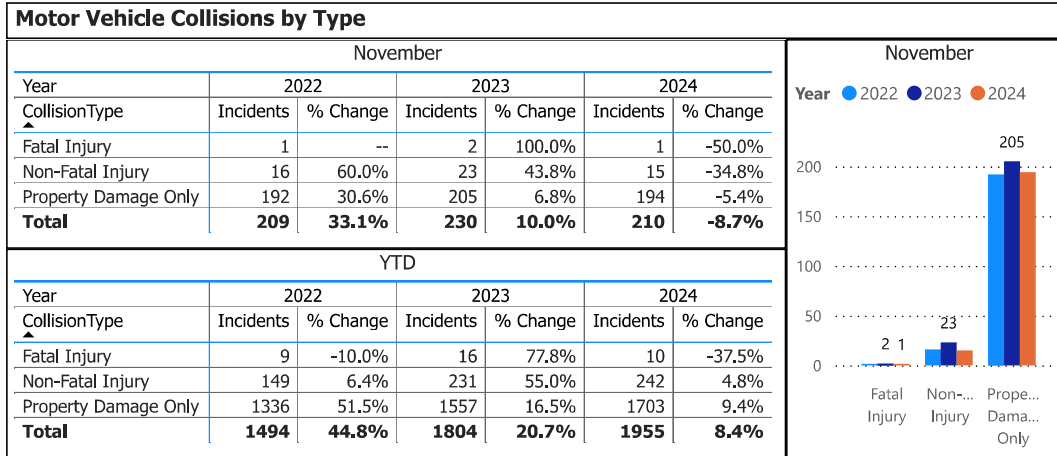
---

Wellington County OPP launched the Festive RIDE campaign in November to maintain road safety and remove drivers that decided to consume alcohol and/or drugs before driving. Wellington County OPP members assisted with multiple Christmas parades across the County, and we were delighted to see the happy faces and festive spirit within the community at each event. Members were also present at the many Remembrance Day services throughout the County paying their respects for our fallen heroes.

With winter now upon us, Wellington County OPP cannot stress enough the need to slow down and drive according to the weather conditions. Be prepared for an emergency as your preparedness can turn what would be an emergency into a minor inconvenience. And as always do not driver under the influence of drugs or alcohol. The steps we take before going out on the road and while we are on them can make a difference.



### OPP Detachment Board Report Collision Reporting System November 2024



Data source (Collision Reporting System) date:  
09-Dec-2024

Detachment: 6T - WELLINGTON COUNTY (Centre Wellington)  
Location code(s): 6T00 - WELLINGTON COUNTY (Centre Wellington), 6T10 - WELLINGTON COUNTY (South Wellington), 6T40 - WELLINGTON COUNTY (North Wellington)

Area(s): ALL  
Data source date:  
09-Dec-2024

Report Generated on:  
13-Dec-2024 9:52:12 AM

**OPP Detachment Board Report  
Collision Reporting System  
November 2024**

Fatalities in Detachment Area - Incidents									
November									
Type	Motor Vehicle			Motorized Snow Vehicle			Off-Road Vehicle		
Year	Alcohol/Drugs	Incidents	% Change	Alcohol/Drugs	Incidents	% Change	Alcohol/Drugs	Incidents	% Change
2022	0	1	--	0	0	--	0	0	--
2023	1	2	100.0%	0	0	--	0	0	--
2024	1	1	-50.0%	0	0	--	0	0	--

YTD									
Type	Motor Vehicle			Motorized Snow Vehicle			Off-Road Vehicle		
Year	Alcohol/Drugs	Incidents	% Change	Alcohol/Drugs	Incidents	% Change	Alcohol/Drugs	Incidents	% Change
2022	3	8	-20.0%	0	0	--	0	1	--
2023	5	16	100.0%	0	0	--	0	0	-100.0%
2024	1	8	-50.0%	0	0	--	1	2	--

Fatalities in Detachment Area - Persons Killed							
November							
Type	Motor Vehicle		Motorized Snow Vehicle		Off-Road Vehicle		
Year	Persons Killed	% Change	Persons Killed	% Change	Persons Killed	% Change	
2022	1	--	0	--	0	--	
2023	2	100.0%	0	--	0	--	
2024	1	-50.0%	0	--	0	--	

YTD							
Type	Motor Vehicle		Motorized Snow Vehicle		Off-Road Vehicle		
Year	Persons Killed	% Change	Persons Killed	% Change	Persons Killed	% Change	
2022	11	10.0%	0	--	1	--	
2023	17	54.5%	0	--	0	-100.0%	
2024	9	-47.1%	0	--	2	--	

Primary Causal Factors in Fatal Motor Vehicle Collisions						
	November			YTD		
	2022	2023	2024	2022	2023	2024
Speeding	1	0	0	1	3	2
Speeding % Change	--	-100.0%	--	-66.7%	200.0%	-33.3%
Distracted	0	0	1	1	2	5
Distracted % Change	--	--	--	0.0%	100.0%	150.0%
Alcohol/Drugs	0	1	1	3	5	2
Alcohol/Drugs % Change	--	--	0.0%	0.0%	66.7%	-60.0%
Wildlife	0	0	0	0	0	0
Wildlife % Change	--	--	--	--	--	--
NoSeatbelt	0	0	1	2	3	2
NoSeatbelt YoY%	--	--	--	0.0%	50.0%	-33.3%

November						
Year	Speeding	Distracted	Alcohol/Drugs	Wildlife	NoSeatbelt	
2022	1	0	0	0	0	
2023	0	0	1	0	0	
2024	1	1	0	0	1	

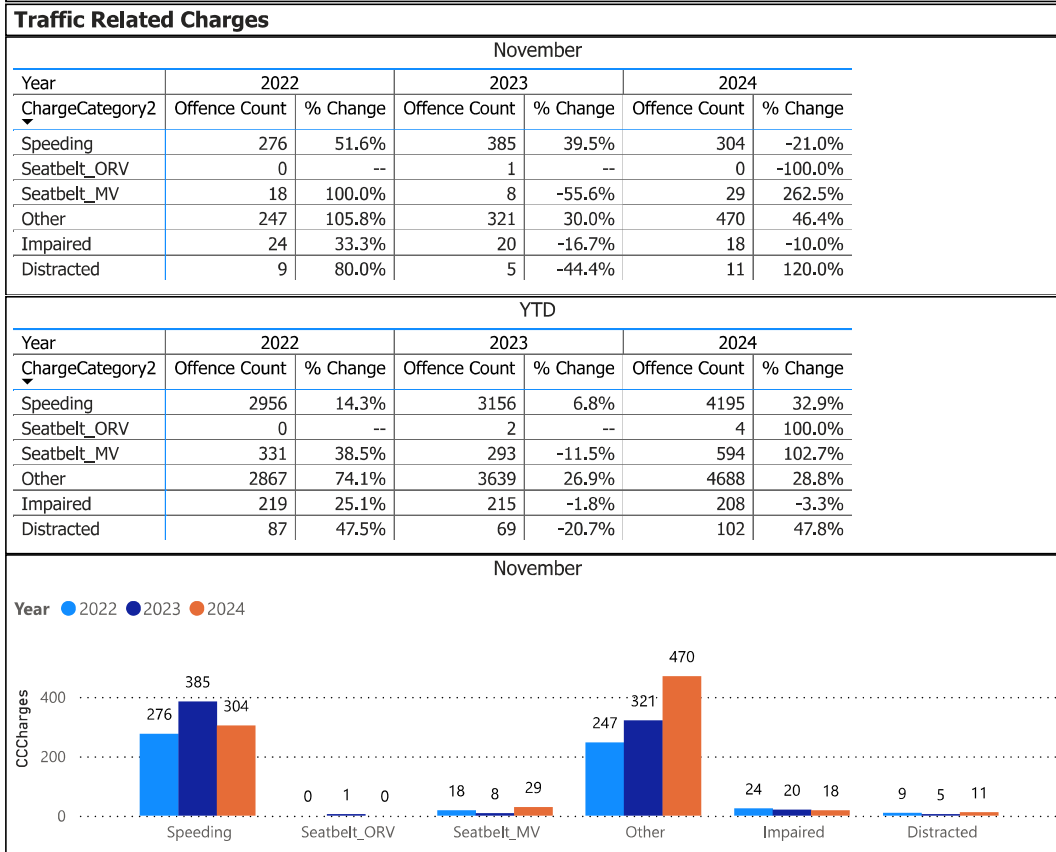
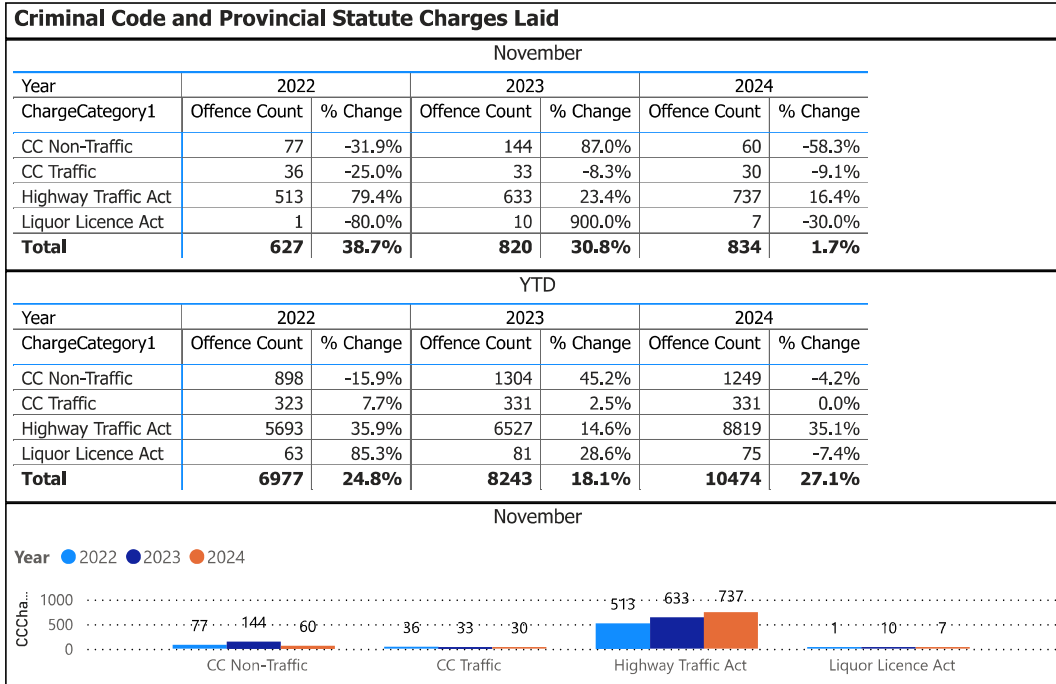
Data source (Collision Reporting System) date:  
09-Dec-2024

Detachment: 6T - WELLINGTON COUNTY (Centre Wellington)  
Location code(s): 6T00 - WELLINGTON COUNTY (Centre Wellington), 6T10 - WELLINGTON COUNTY (South Wellington), 6T40 - WELLINGTON COUNTY (North Wellington)

Area(s): ALL  
Data source date:  
09-Dec-2024

Report Generated on:  
13-Dec-2024 9:52:12 AM

### OPP Detachment Board Report Records Management System November 2024

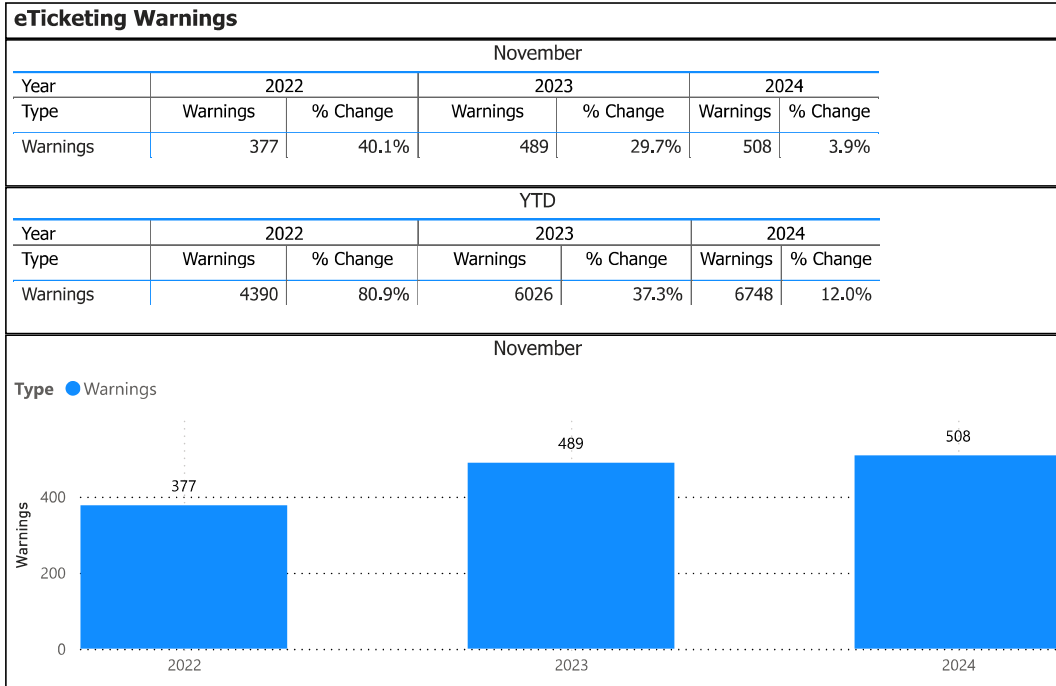


Detachment: 6T - WELLINGTON COUNTY (Centre Wellington)  
 Location code(s): 6T00 - WELLINGTON COUNTY (Centre Wellington), 6T10 - WELLINGTON COUNTY (South Wellington), 6T40 - WELLINGTON COUNTY (North Wellington)

Area(s): ALL  
 Data source date:  
 09-Dec-2024

Report Generated on:  
 13-Dec-2024 9:52:12 AM

**OPP Detachment Board Report  
Records Management System  
November 2024**



**Detachment: 6T - WELLINGTON COUNTY (Centre Wellington)**

Location code(s): 6T00 - WELLINGTON COUNTY (Centre Wellington), 6T10 - WELLINGTON COUNTY (South Wellington), 6T40 - WELLINGTON COUNTY (North Wellington)

Area(s): ALL

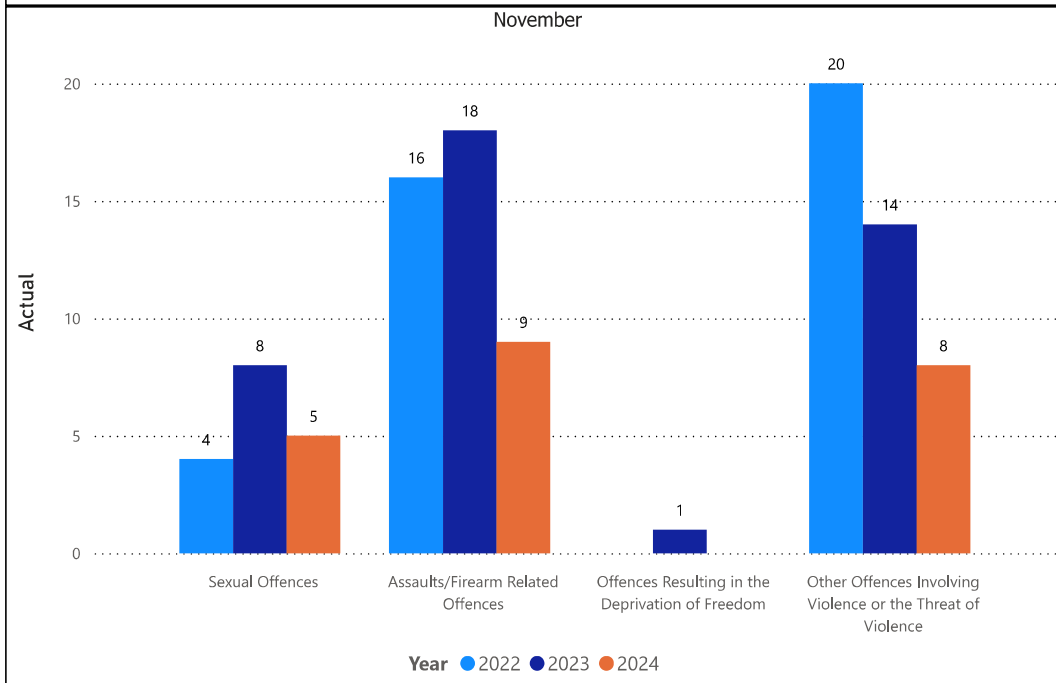
Data source date:  
09-Dec-2024

Report Generated on:  
13-Dec-2024 9:52:12 AM

### OPP Detachment Board Report Records Management System November 2024

Violent Crime						
November						
Year	2022		2023		2024	
ViolationGrp	Actual	% Change	Actual	% Change	Actual	% Change
Homicides	0	--	0	--	0	--
Other Offences Causing Death	0	--	0	--	0	--
Attempted Murder	0	--	0	--	0	--
Sexual Offences	4	-66.7%	8	100.0%	5	-37.5%
Assaults/Firearm Related Offences	16	0.0%	18	12.5%	9	-50.0%
Offences Resulting in the Deprivation of Freedom	0	--	1	--	0	-100.0%
Robbery	0	--	0	--	0	--
Other Offences Involving Violence or the Threat of Violence	20	11.1%	14	-30.0%	8	-42.9%
Offences in Relation to Sexual Services	0	--	0	--	0	--
<b>Total</b>	<b>40</b>	<b>-13.0%</b>	<b>41</b>	<b>2.5%</b>	<b>22</b>	<b>-46.3%</b>

YTD						
Year	2022		2023		2024	
ViolationGrp	Actual	% Change	Actual	% Change	Actual	% Change
Homicides	0	--	1	--	0	-100.0%
Other Offences Causing Death	0	--	0	--	0	--
Attempted Murder	0	--	0	--	0	--
Sexual Offences	57	9.6%	76	33.3%	63	-17.1%
Assaults/Firearm Related Offences	138	-12.7%	194	40.6%	206	6.2%
Offences Resulting in the Deprivation of Freedom	2	100.0%	6	200.0%	2	-66.7%
Robbery	2	-50.0%	4	100.0%	2	-50.0%
Other Offences Involving Violence or the Threat of Violence	134	13.6%	134	0.0%	141	5.2%
Offences in Relation to Sexual Services	0	--	0	--	0	--
<b>Total</b>	<b>333</b>	<b>0.0%</b>	<b>415</b>	<b>24.6%</b>	<b>414</b>	<b>-0.2%</b>



Detachment: 6T - WELLINGTON COUNTY (Centre Wellington)

Location code(s): 6T00 - WELLINGTON COUNTY (Centre Wellington), 6T10 - WELLINGTON COUNTY (South Wellington), 6T40 - WELLINGTON COUNTY (North Wellington)

Area(s): ALL

Data source date:  
09-Dec-2024

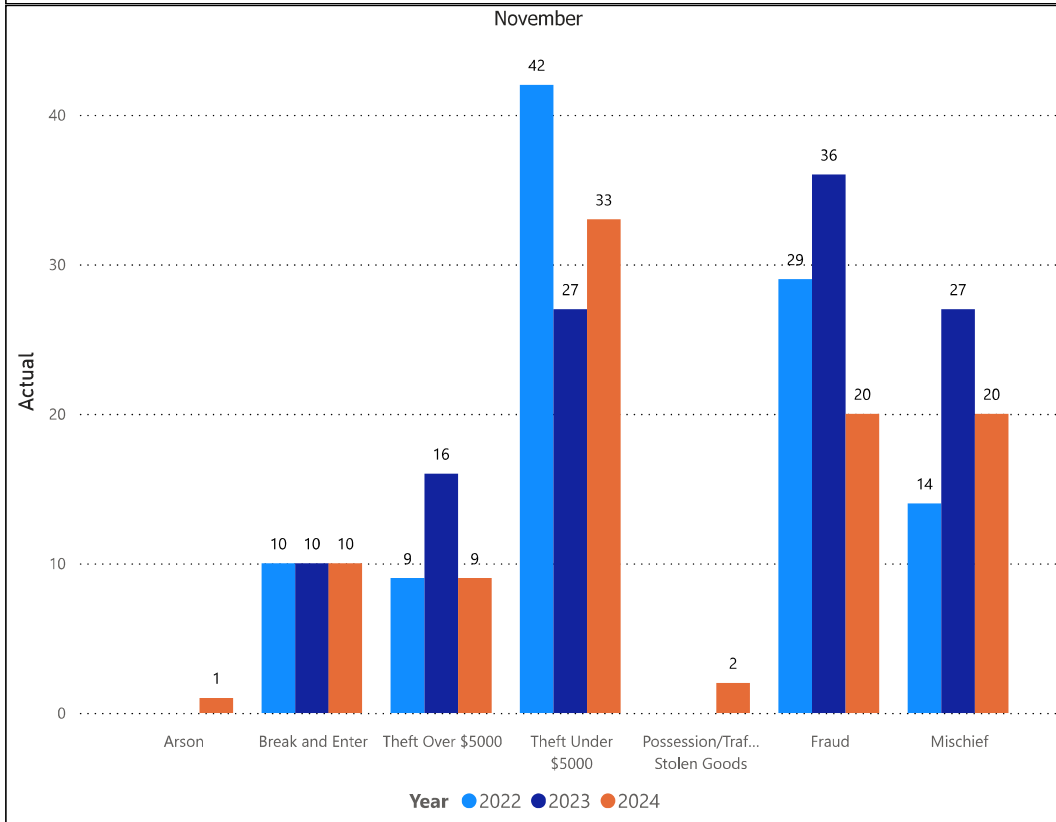
Report Generated on:  
13-Dec-2024 9:52:12 AM

### OPP Detachment Board Report Records Management System November 2024

Property Crime						
November						
Year	2022		2023		2024	
ViolationGrp	Actual	% Change	Actual	% Change	Actual	% Change
Arson	0	--	0	--	1	--
Break and Enter	10	11.1%	10	0.0%	10	0.0%
Theft Over \$5000	9	-59.1%	16	77.8%	9	-43.8%
Theft Under \$5000	42	13.5%	27	-35.7%	33	22.2%
Possession/Trafficking Stolen Goods	0	-100.0%	0	--	2	--
Fraud	29	-19.4%	36	24.1%	20	-44.4%
Mischief	14	-68.2%	27	92.9%	20	-25.9%
<b>Total</b>	<b>104</b>	<b>-31.1%</b>	<b>116</b>	<b>11.5%</b>	<b>95</b>	<b>-18.1%</b>

YTD						
Year	2022		2023		2024	
ViolationGrp	Actual	% Change	Actual	% Change	Actual	% Change
Arson	5	400.0%	12	140.0%	3	-75.0%
Break and Enter	144	29.7%	107	-25.7%	115	7.5%
Theft Over \$5000	163	14.8%	168	3.1%	183	8.9%
Theft Under \$5000	460	3.1%	382	-17.0%	438	14.7%
Possession/Trafficking Stolen Goods	21	40.0%	21	0.0%	13	-38.1%
Fraud	307	-7.0%	422	37.5%	360	-14.7%
Mischief	259	-14.0%	249	-3.9%	194	-22.1%
<b>Total</b>	<b>1359</b>	<b>1.0%</b>	<b>1361</b>	<b>0.1%</b>	<b>1306</b>	<b>-4.0%</b>



Detachment: 6T - WELLINGTON COUNTY (Centre Wellington)

Location code(s): 6T00 - WELLINGTON COUNTY (Centre Wellington), 6T10 - WELLINGTON COUNTY (South Wellington), 6T40 - WELLINGTON COUNTY (North Wellington)

Area(s): ALL

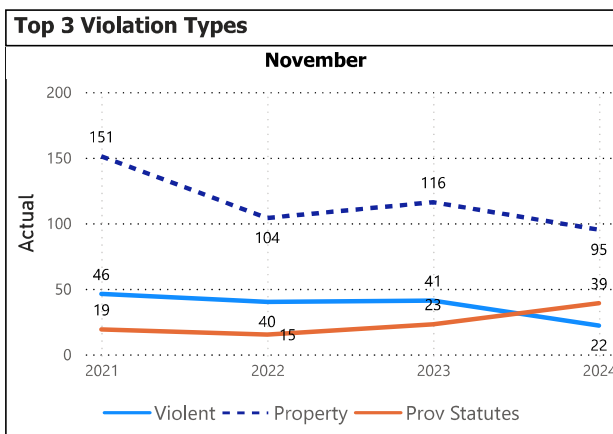
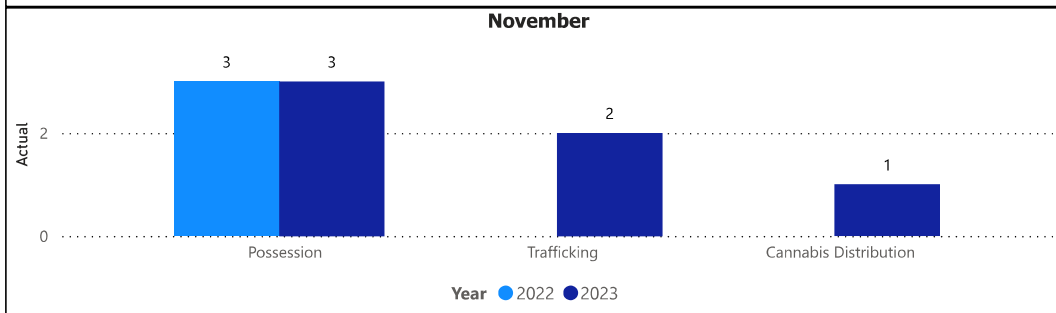
Data source date:  
09-Dec-2024

Report Generated on:  
13-Dec-2024 9:52:12 AM

### OPP Detachment Board Report Records Management System November 2024

Drug Crime						
November						
Year	2022		2023		2024	
ViolationGrp	Actual	% Change	Actual	% Change	Actual	% Change
Possession	3	200.0%	3	0.0%	0	-100.0%
Trafficking	0	-100.0%	2	--	0	-100.0%
Importation & Production	0	--	0	--	0	--
Cannabis Possession	0	--	0	--	0	--
Cannabis Distribution	0	--	1	--	0	-100.0%
Cannabis Sale	0	--	0	--	0	--
Cannabis Importation & Exportation	0	--	0	--	0	--
Cannabis Production	0	--	0	--	0	--
Other Cannabis Violations	0	--	0	--	0	--
<b>Total</b>	<b>3</b>	<b>50.0%</b>	<b>6</b>	<b>100.0%</b>	<b>0</b>	<b>-100.0%</b>

YTD						
Year	2022		2023		2024	
ViolationGrp	Actual	% Change	Actual	% Change	Actual	% Change
Possession	23	-25.8%	20	-13.0%	18	-10.0%
Trafficking	12	-20.0%	11	-8.3%	12	9.1%
Importation & Production	0	-100.0%	0	--	1	--
Cannabis Possession	2	--	1	-50.0%	0	-100.0%
Cannabis Distribution	4	300.0%	1	-75.0%	0	-100.0%
Cannabis Sale	0	-100.0%	0	--	1	--
Cannabis Importation & Exportation	0	--	0	--	0	--
Cannabis Production	1	-50.0%	1	0.0%	1	0.0%
Other Cannabis Violations	0	--	0	--	0	--
<b>Total</b>	<b>42</b>	<b>-19.2%</b>	<b>34</b>	<b>-19.0%</b>	<b>33</b>	<b>-2.9%</b>



Top 5 Violation Groups					
November					
ViolationGrp	2021	2022	2023	2024	Total
Theft Under \$5000	37	42	27	33	139
Fraud	36	29	36	20	121
Mischief	44	14	27	20	105
Provincial Statutes	19	15	23	39	96
Other Offences Involving Violence or the Threat of Violence	18	20	14	8	60

Detachment: 6T - WELLINGTON COUNTY (Centre Wellington)

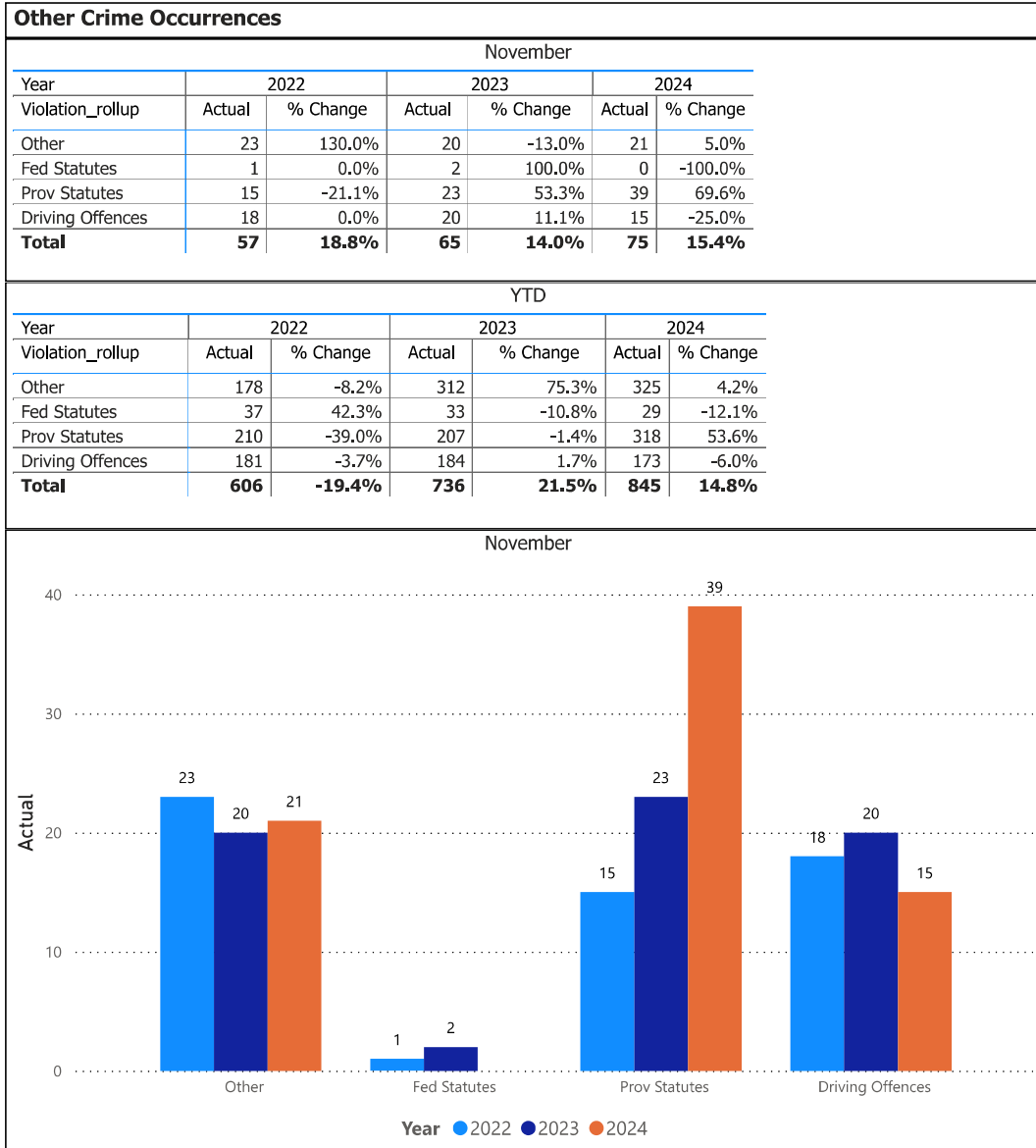
Location code(s): 6T00 - WELLINGTON COUNTY (Centre Wellington), 6T10 - WELLINGTON COUNTY (South Wellington), 6T40 - WELLINGTON COUNTY (North Wellington)

Area(s): ALL

Data source date:  
09-Dec-2024

Report Generated on:  
13-Dec-2024 9:52:12 AM

### OPP Detachment Board Report Records Management System November 2024



Detachment: 6T - WELLINGTON COUNTY (Centre Wellington)

Location code(s): 6T00 - WELLINGTON COUNTY (Centre Wellington), 6T10 - WELLINGTON COUNTY (South Wellington), 6T40 - WELLINGTON COUNTY (North Wellington)

Area(s): ALL

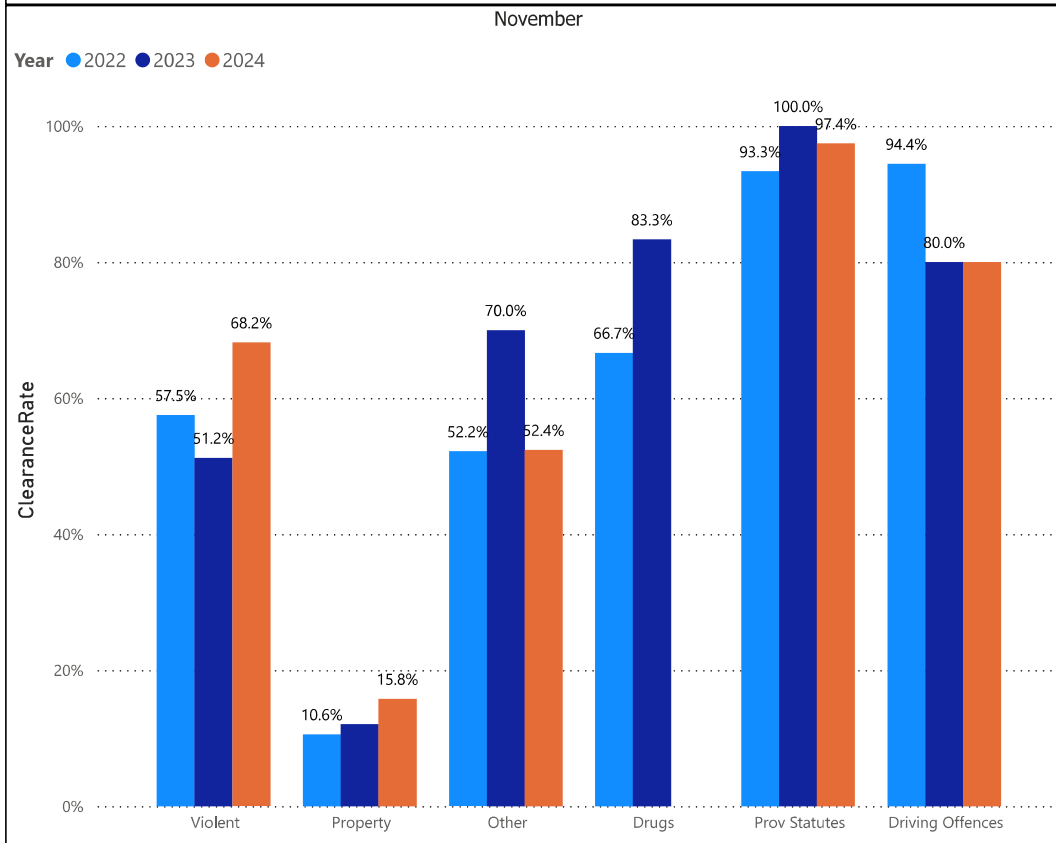
Data source date:  
09-Dec-2024

Report Generated on:  
13-Dec-2024 9:52:12 AM

### OPP Detachment Board Report Records Management System November 2024

Clearance Rate						
November						
Year	2022		2023		2024	
	%	% Change	%	% Change	%	% Change
Violent	57.5%	15.0%	51.2%	-10.9%	68.2%	33.1%
Property	10.6%	-36.1%	12.1%	14.1%	15.8%	30.8%
Other	52.2%	30.4%	70.0%	34.2%	52.4%	-25.2%
Drugs	66.7%	-33.3%	83.3%	25.0%		-100.0%
Fed Statutes	0.0%	--	0.0%	--		--
Prov Statutes	93.3%	4.3%	100.0%	7.1%	97.4%	-2.6%
Driving Offences	94.4%	-5.6%	80.0%	-15.3%	80.0%	0.0%

YTD						
Year	2022		2023		2024	
	%	% Change	%	% Change	%	% Change
Violation_rollup						
Violent	56.5%	-9.6%	61.0%	8.0%	64.0%	5.0%
Property	11.4%	-19.6%	15.1%	32.1%	13.8%	-8.5%
Other	52.8%	-10.1%	63.1%	19.6%	64.3%	1.8%
Drugs	78.6%	-2.7%	88.2%	12.3%	69.7%	-21.0%
Fed Statutes	97.3%	15.0%	81.8%	-15.9%	100.0%	22.2%
Prov Statutes	96.2%	8.5%	94.7%	-1.6%	95.3%	0.6%
Driving Offences	89.0%	-1.0%	85.9%	-3.5%	76.3%	-11.1%



Detachment: 6T - WELLINGTON COUNTY (Centre Wellington)

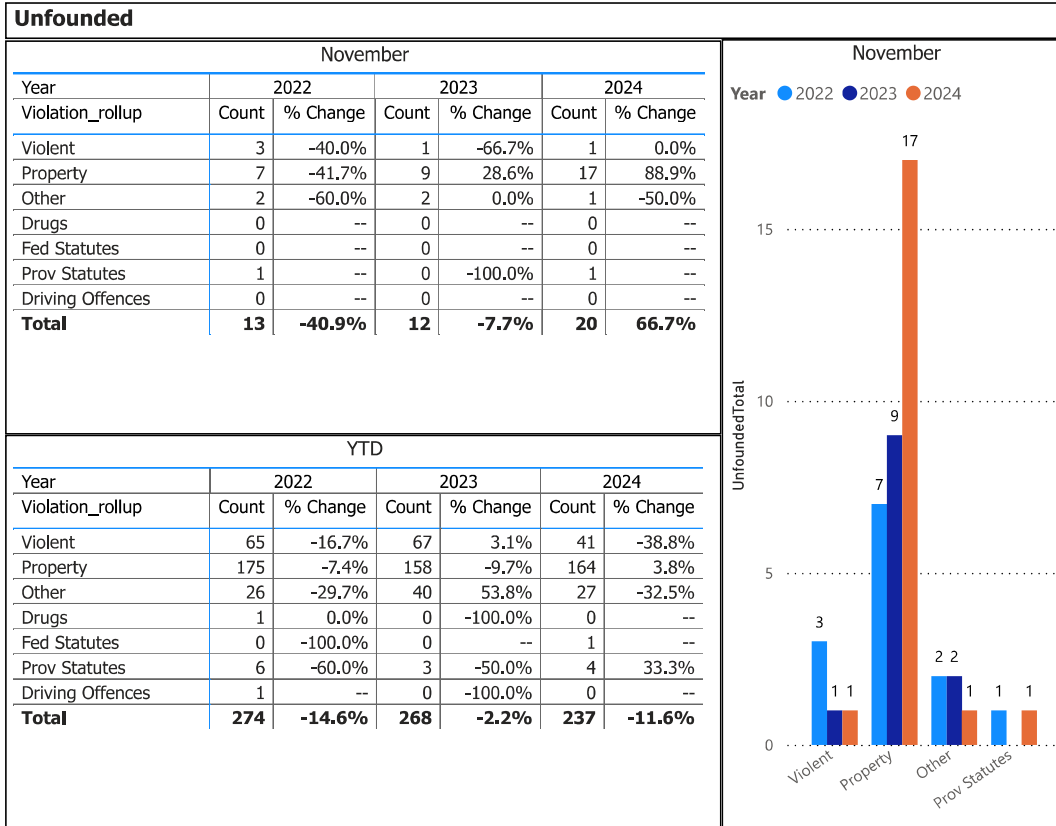
Location code(s): 6T00 - WELLINGTON COUNTY (Centre Wellington), 6T10 - WELLINGTON COUNTY (South Wellington), 6T40 - WELLINGTON COUNTY (North Wellington)

Area(s): ALL

Data source date:  
09-Dec-2024

Report Generated on:  
13-Dec-2024 9:52:12 AM

**OPP Detachment Board Report  
Records Management System  
November 2024**



Detachment: 6T - WELLINGTON COUNTY (Centre Wellington)

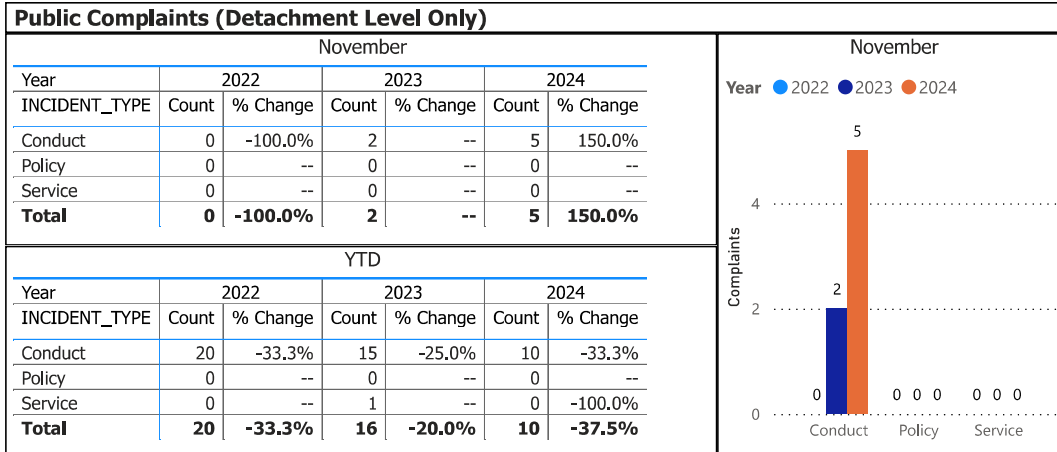
Location code(s): 6T00 - WELLINGTON COUNTY (Centre Wellington), 6T10 - WELLINGTON COUNTY (South Wellington), 6T40 - WELLINGTON COUNTY (North Wellington)

Area(s): ALL

Data source date:  
10-May-2024

Report Generated on:  
13-Dec-2024 9:52:12 AM

### OPP Detachment Board Report Records Management System November 2024



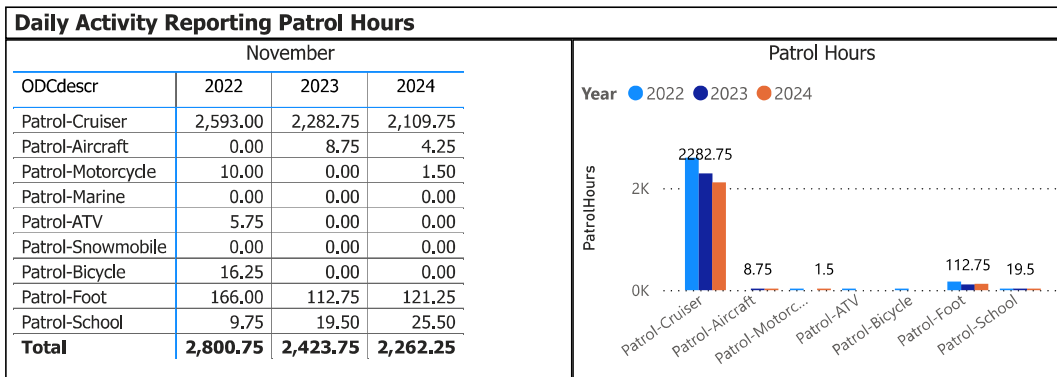
Data source: RMS Data Feed

Ontario Provincial Police, Professional Standards Bureau Commander Reports - File Manager System

Data source date:

09-Dec-2024

### Daily Activity Reporting



Data source (Daily Activity Reporting System) date:

09-Dec-2024

Detachment: 6T - WELLINGTON COUNTY (Centre Wellington)

Location code(s): 6T00 - WELLINGTON COUNTY (Centre Wellington), 6T10 - WELLINGTON COUNTY (South Wellington), 6T40 - WELLINGTON COUNTY (North Wellington)

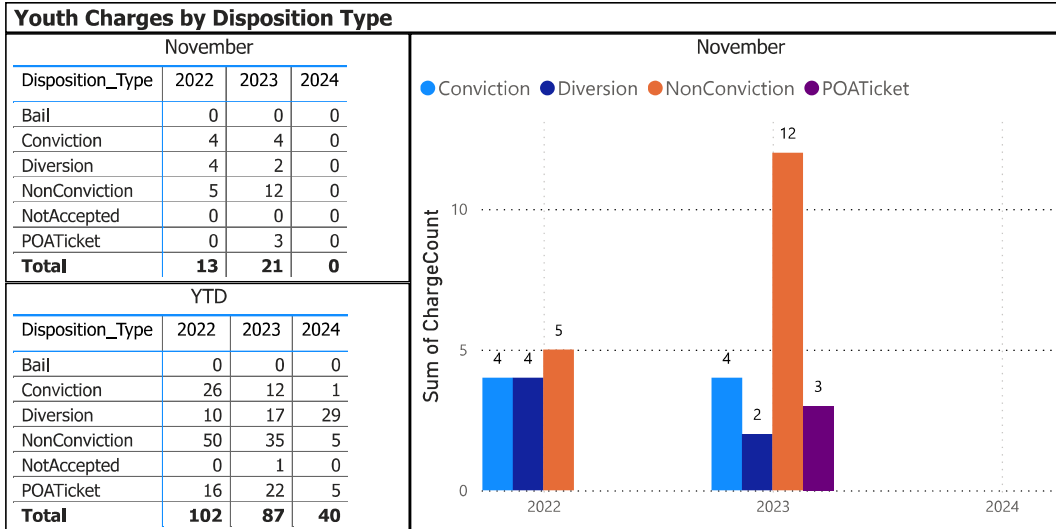
Data source date:

09-Dec-2024

Report Generated on:

13-Dec-2024 9:52:12 AM

### OPP Detachment Board Report Records Management System November 2024



Youth Charges by Disposition and Occurrence Type		
November		
Year	2024	Total
OccType		
<b>Total</b>		<b>0</b>

YTD							
Year	2024						Total
OccType	Bail	Conviction	Diversion	NonConviction	NotAccepted	POATicket	
Assault	0	0	4	0	0	0	<b>4</b>
Bail violations		0	0	4	0	0	<b>4</b>
eTicket - Person		0	0	0	0	3	<b>3</b>
Indecent acts		0	1	0	0		<b>1</b>
Mischief		0	15	0	0		<b>15</b>
Police pursuit		0	0	1	0		<b>1</b>
Sexual assault		0	1	0	0		<b>1</b>
Theft		0	4	0	0		<b>4</b>
Threats		0	1	0	0		<b>1</b>
Traffic enforcement - H.T.A.		1	2	0	0	2	<b>5</b>
Trouble with youth		0	1	0	0	0	<b>1</b>
<b>Total</b>	<b>0</b>	<b>1</b>	<b>29</b>	<b>5</b>	<b>0</b>	<b>5</b>	<b>40</b>

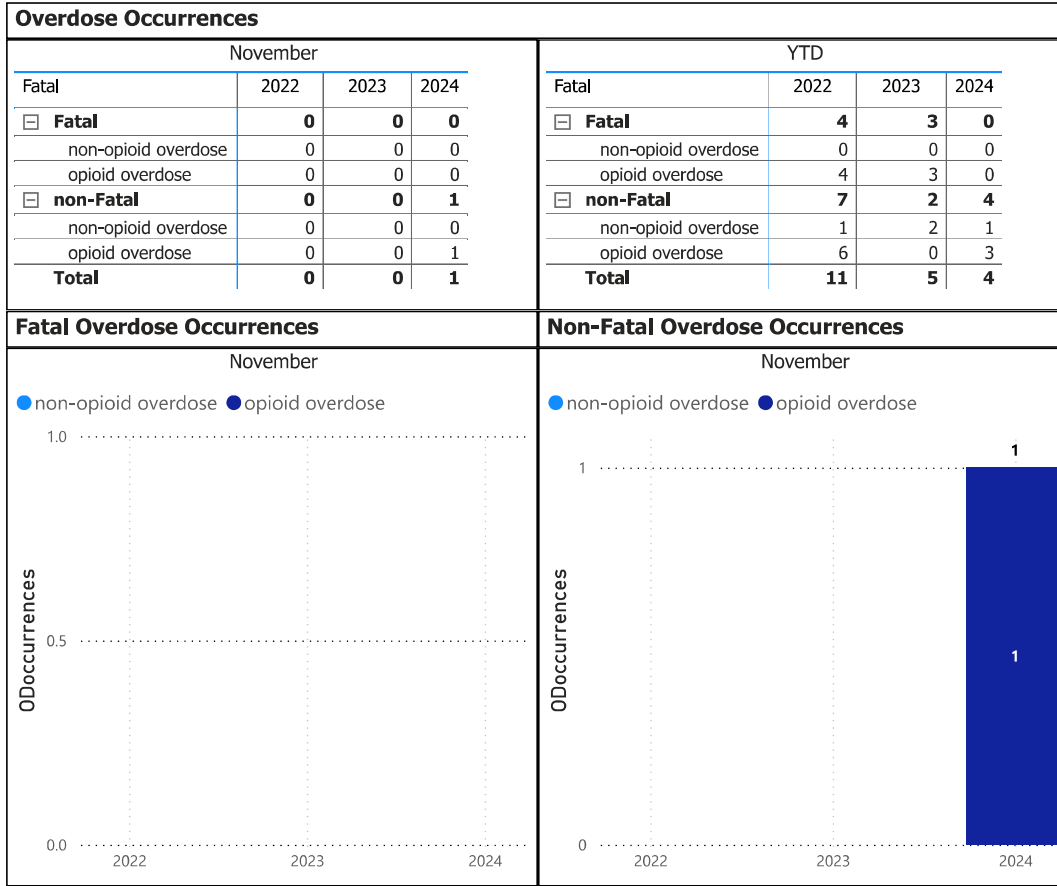
The tables and chart on this page present summarized youth charges by disposition and occurrence type that have been recorded in the OPP Niche RMS application. Of note... the Niche data sourced for this report page only lists youth charges that have had a disposition type entered against them. Therefore, please be aware that the counts of youth charges entries on this report page are under stating the potential sum of youth charges that are in OPP Niche RMS.

**Detachment: 6T - WELLINGTON COUNTY (Centre Wellington)**  
 Location code(s): 6T00 - WELLINGTON COUNTY (Centre Wellington), 6T10 - WELLINGTON COUNTY (South Wellington), 6T40 - WELLINGTON COUNTY (North Wellington)

Area(s): ALL  
 Data source date:  
 09-Dec-2024

Report Generated on:  
 13-Dec-2024 9:52:12 AM

### OPP Detachment Board Report Records Management System November 2024



Detachment: 6T - WELLINGTON COUNTY (Centre Wellington)

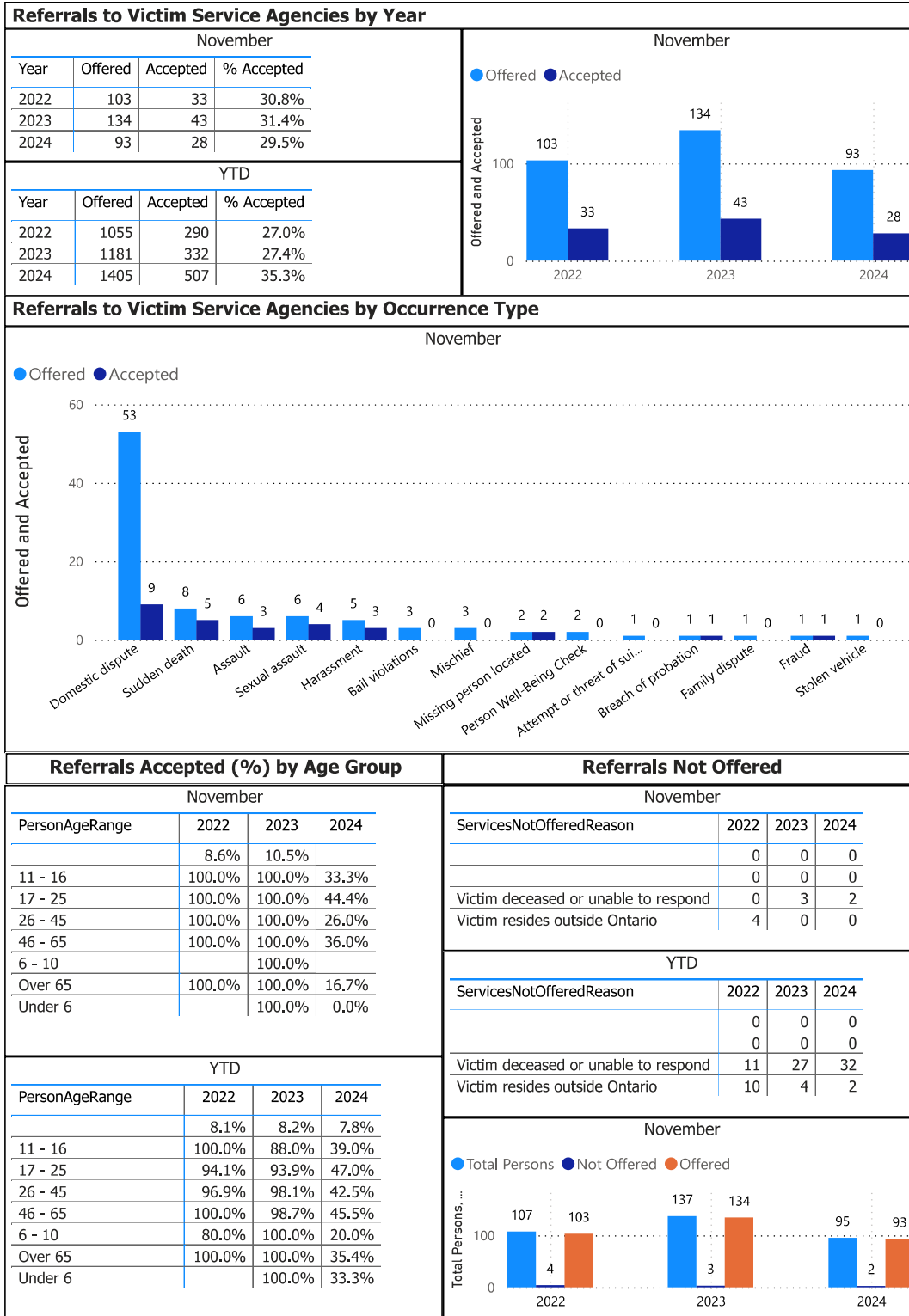
Location code(s): 6T00 - WELLINGTON COUNTY (Centre Wellington), 6T10 - WELLINGTON COUNTY (South Wellington), 6T40 - WELLINGTON COUNTY (North Wellington)

Area(s): ALL

Data source date:  
09-Dec-2024

Report Generated on:  
13-Dec-2024 9:52:12 AM

### OPP Detachment Board Report Records Management System November 2024



Detachment: 6T - WELLINGTON COUNTY (Centre Wellington)

Location code(s): 6T00 - WELLINGTON COUNTY (Centre Wellington), 6T10 - WELLINGTON COUNTY (South Wellington), 6T40 - WELLINGTON COUNTY (North Wellington)

Area(s): ALL

Data source date:  
09-Dec-2024

Report Generated on:  
13-Dec-2024 9:52:12 AM

# Contacts

## In an emergency DIAL 911

You can also call  
**1 888 310 1122**  
1 888 310 1133 (TTY)  
Anywhere in Ontario, 24-hour toll free

## Non-emergency calls

Please call  
**1 888 310 1122**  
1 888 310 1133 (TTY)  
Anywhere in Ontario, 24-hour toll free

### County of Wellington OPP Detachments

#### Centre Wellington Operations Centre

371 Charles Allan Way,  
Fergus, ON N1M 2W3  
Non-Emergency 519-846-5930  
Fax 519-846-5460

#### South Wellington Operations Centre

5145 Wellington Road 27,  
Rockwood, ON N0B 2K0  
Non-Emergency 519-856-1506  
Fax 519-846-2327

#### North Wellington Operations Centre

6725 Wellington Road 109,  
Palmerston, ON N0G 2P0  
Non-Emergency 519-343-5770  
Fax 519-343-5780

### OPP General Headquarters

**Ontario Provincial Police**  
General Headquarters  
Lincoln M. Alexander Building  
777 Memorial Avenue  
Orillia, ON  
L3V 7V3

General inquiries: 705 329-6111  
8:00 am to 4:00 pm, Monday to Friday



[www.opp.ca](http://www.opp.ca)



[Report a Crime Online](#)



[News releases](#)



[Upcoming events](#)



[Social media](#)



© 2024 Ontario Provincial Police – All rights reserved