



**Wellington O.P.P.
Detachment Board Report**

November 2024

Detachment Commander:
Inspector Steve Thomas

From the Detachment Commander

As Remembrance Day approaches, it is a time to remind everyone of the ultimate sacrifice past and current generations have made to secure our freedom and uphold our Democratic values. I encourage everyone to attend a local cenotaph or Remembrance Day event to pay their respects for those who gave everything for the benefit of future generations.

Although the recent pattern of warmer weather continues, I want to remind everyone that winter draws near, and snow is coming. It is time to install those winter tires, keep an eye on the forecast and slow down when the snow arrives. Many winter collisions can be prevented if we ease up on the pedal.

Along with snow, winter brings the Holiday Season, which in turn brings about the yearly Festive Ride Campaign. Wellington County OPP officers will fan out across the County conducting RIDE campaigns to remove drunk drivers from the roadways. Please, if you are attending events and are consuming alcohol or cannabis, have a designated driver, call a cab, or use a ride sharing service. There are so many options available. There is never an excuse for driving while impaired!

As this is the last Police Service Board Report prior to the new year, I want to wish everyone a very safe and happy Holiday Season and a Happy New Year.

Be safe, stay safe and arrive alive!



Inspector Steve Thomas
519-846-5930

Index	
Crime	3
Traffic	5
Community Response	7
Court	11
Personnel & Acknowledgements	12
Report Summary	13
Statistical Summary	14



Crime

Crime Unit

Supervisor: Acting Detective Sergeant, Christine Millson

During the month of October, the Crime Unit became involved in numerous Sexual Assault investigations. These investigations take time and persistence with gathering evidence to lay charges. After a lengthy investigation and multiple interviews, a male party was arrested and charged with Sexual Assault on a Person Under 16 years of age and Sexual Interference.

The Crime Unit executed an early morning warrant in the City of Toronto in relation to a month's long fraud investigation. In February 2024, a business in Centre Wellington contacted the OPP to advise that they lost approximately \$230,000.00 to a phishing scam. Through investigation grounds were obtained and a search warrant was issued and executed. A male party was arrested and charged with Fraud over \$5000, Theft over \$5000, Possession of Property Obtained by Crime Over \$5000, Forgery (two counts), Fail to Comply with Probation Order (two counts), Disobey Court Order and Laundering Proceeds of Crime.

Members of the Crime Unit attended training courses that were Ontario Police College accredited in relation to the topic of Homicide and Major Case Management. Another member had the opportunity to attend the Instructional Techniques course which will allow the member to facilitate teaching a topic to members of the organization.

Detective Constable Mike Wraight left the Unit after being a member for six years. D/C Wraight was promoted to the rank of Detective Sergeant within the Child Sexual Exploitation Unit which investigates those responsible for child abuse material as well as offences of child luring, child sex tourism and voyeuristic recording of children within the Province of Ontario. Congratulations and thank you for six years of dedicated service to the County of Wellington Crime Unit.



Community Street Crime Unit

Supervisor: Detective Sergeant, Jeffrey Dudley

As part of our commitment to continuous learning, the Community Street Crime Unit (CSCU) Members attended various training courses and workshops within West Region. The officers bring back knowledge they can share with frontline, and it has provided them with additional tools to utilize during their investigations.

CSCU executed a property related warrant in South Wellington. The suspect was using a storage yard to move stolen property in and out of the area. The suspect was involved in heavy equipment and load thefts in Southern Ontario. Wellington County O.P.P. recovered approximately one million dollars' worth of stolen property. This property included, box trucks, brand new snow machines in shipping crates, merchandise, a tanker truck, and a transport truck.

CSCU assisted the Biker Enforcement Unit with a search warrant execution and investigation as part of the ongoing commitment to public safety and reducing harm in our communities. As a result, several illegal firearms were located and seized. Three people are facing firearm and weapon charges.

CSCU assisted Essex County CSCU with a property crime investigation. In the month of October, a tractor trailer was stolen out of Essex and the truck was located by Wellington CSCU in the Cambridge area. The Truck was towed and returned to its owner. The value of the stolen tractor trailer is estimated to be \$50,000.00.

Wellington County CSCU continues to prioritize local crime trends, the opioid crises and targeting local people identified in property thefts. CSCU members are committed to continuous learning and are attending training when time permits. CSCU has developed local training, mentoring initiatives for front line members to promote officer safety and enhance their local knowledge on the current drug and property crimes trends in the area.



Traffic

Traffic Management Unit

Supervisor: Sergeant Kevin Driscoll

Black Cat Speed Monitoring Devices

	Study Length	Number of Vehicles	Recommended Enhanced Enforcement	Posted Speed Limit	85 th Percentile	Collision History (5 years)
Location						
Eighth Line Pilkington (two set up between Wellington Road 17 and 21)	10 days	36,901	Yes	60	91	Nothing significant
Location						
Wellington Road 50 between County 125 and 4th Line	7 days	27,214	No	70	91	Nothing significant
County Deployed						
Location						
Wellington Road 5 (near hospital)	7 days	16,154	No	50	57	Nothing significant
Location						
Wellington Road 22 near 911 # 8355	7 days	15,924	No	80	97	Nothing significant
Location						
Wellington Road 29 (between Wellington Road 22 and Wellington Road 22)	7 days	26,795	Yes	50	81	Nothing significant
Location						
Wellington Road 124 at Erinville	7 days	49,146	No	50	63	Nothing significant

Enhanced Enforcement Program

Enhanced Enforcement is a focused traffic safety initiative which areas of concern are identified through various means and police conduct education and charge drivers who fail to follow the rules of the road. The goal is to reduce safety issues through visibility, presence, and enforcement.

Enhanced Enforcement protocols were rolled out on November 14, 2023. The following locations and charges are from October 2024.

Location	Charges
No enhanced enforcement locations for October	

Traffic Management Unit - Administration

Members of the Wellington Detachment conducted 58 RIDE spot checks.

PC Griffin and PC Campbell have been extremely busy assisting MTO with various truck enforcement blitzes.

October 1st & 2nd – Mohawk Raceway – 487 truck inspections, 132 placed out of service, 322 charges. (MTO/OPP/Guelph PS/Peel PS/York PS/Hamilton PS/Halton PS/Waterloo Regional PS/Brantford PS)

October 25th – Brant County

October 29th – Dufferin County

October 30th – Perth County

Stats are currently unavailable for the three traffic enforcement blitzes listed above.

Wellington County to host an enforcement blitz. Planning currently under way.

Traffic unit members will be assisting with the many Remembrance Day services as well as Christmas Parades in all the communities.

Due to data listed above from Black Cat studies, two new locations for enhanced enforcement will be put in place.



Community Response

Community Response Unit

Supervisor: Sergeant Adam McGough

Community Response Unit / Offender Management & Apprehension Program:

Offender Management & Apprehension Program

The members of the Community Response Unit continue facilitating the Offender Management & Apprehension Program. In the month of October CRU was able to execute 12 out of the 22 executed this month by Wellington County OPP. In October, there were 16 bail condition compliance checks on those in the community. There remain 195 active warrants.

Community Safety and Services

Members have been invited and are preparing to meet with Fergus and Palmerston Grove Youth Wellness Hubs in preventative and awareness measures. Meetings with Tiffany Fagan will be underway shortly on how best to integrate OPP with these centres/hubs.



October 1st, 2024 - Members participated in a virtual “Safe Communities Day 2024” online forum that had over 37 grade 5 classrooms from across the County. This was organized by Christine Veit of the Safe Communities Wellington County. The OPP content focused on three previously aired videos completed by Wellington OPP Members PC Cunningham, PC Hickey and PC Mullan on Bicycle, Cyber Safety and ATV Safety. After the three videos CRU members had a Question and Answer period. Between 500-700 students were integrated into the forum from their individual classrooms!



Mental Health Liaison

Officer Watt was re-certified on October 23/24 in Level One VTRA (Violent Threat Risk Assessment) accredited by CTIP (Centre for Trauma Informed Practices). This recertification allows Wellington OPP to adequately respond to School Board/Schools when faced with students making threats in the school place.



Media

The Media / CSO office has had the privilege to present to a wide array of elementary catholic schools throughout the county about the following topics:

- Community Partners (Kindergarten classes)
- Online Safety / Online bullying (Grade 5/6, 7/8's).
- Weapon Presentations (Grade 5-8's) - educating students to not bringing weapons to school



So far, since September and continuing into October, our office has spoken to around 500 students between six schools throughout the county with more schools wanting to be included. This proactive work is building relationships with not only our school partners, but with students who are all eager with their questions and natural curiosity.

While in parallel to the rising school involvement, the media office has been actively communicating with local media partners through daily releases about community service calls and updates on social media. We also highlighted our Auxiliary Unit's efforts at the Thanksgiving food drive in Fergus.



All Terrain Vehicle (ATV) SAFETY TIPS

ATV's are versatile machines and must be handled carefully like any other vehicle.

Wellington County O.P.P. reminds ATV drivers to:

<ul style="list-style-type: none"> <input type="checkbox"/> Always Ride Sober. <input type="checkbox"/> Take an ATV/ORV Safety Course. <input type="checkbox"/> Ride within your abilities and comfort level. <input type="checkbox"/> Ride in Designated Areas Only. <input type="checkbox"/> Keep Noise Levels Low: Be mindful of your surroundings and wildlife. 	<ul style="list-style-type: none"> <input type="checkbox"/> Pre-Ride Safety Inspection: Check brakes, lights, tires, and fuel before riding. <input type="checkbox"/> Drive no more than 20 km/h on roads with a posted limit of 50 km/h or less. <input type="checkbox"/> Drive no more than 50 km/h on roads with a posted limit greater than 50 km/h.
--	---

For information on the legal requirements of driving an ATV/ORV in Ontario, consult the Off-Road Vehicles Act and the Highway Traffic Act. Also, refer to your local municipality for specific by-laws in relation to ATV / ORV riding as each township and/or municipality can vary.

Additionally, we continue to work with the County to think on proactive messaging on quarterly newsletters to better educate the public on certain topics, such as ATV safety, hunting safety and trick-or-treat safety to name a few.

IMPACT (Integrated Mobile Police and Crisis Team)

September 2024

Individuals Served	Requests for Service	Live Calls with Police	Calls Diverted from Hospital
39	49	7	100%

Safe Communities Wellington County

October was an incredibly active month for Safe Communities Wellington County, marked by significant events aimed at promoting safety and wellness within our community.

Safe Communities Day

- Over 750 students participated in the event.
- Worksheets were provided to engage students in safety education.
- As a reward for their participation, each student received a fluorescent green bandana. This initiative aims to enhance visibility for those walking or biking.
- The Mental Wellness Action Group created wellness kits for the participating students, further supporting mental health and well-being among youth.

Canadian Youth Road Safety Week

- Outreach: The week involved visits to five high schools.
- Focus: Discussions centered around youth involvement in road safety, encouraging students to identify unsafe areas on roads and brainstorm potential solutions. This initiative empowers students to take an active role in their community's safety.

October's initiatives reflect Safe Communities Wellington County's commitment to enhancing the safety and well-being of our youth. By engaging students in meaningful activities and discussions, we are fostering a culture of awareness and responsibility in road safety and overall wellness.

Auxiliary Unit

Unit Commander: Auxiliary Staff Sergeant J. SWAN

Liaison: Provincial Constable Kyle Draves

Training in October consisted of a review of traffic control and a refresher on the radio system now that we have fully switched over to the new radio system. The unit assisted with a Thanksgiving food drive at Freshco in Fergus in cooperation with the Centre Wellington Food Bank. Members ran a car seat clinic in Rockwood on October 20. 4 inspections were booked, and an additional 3 walk-in inspections were completed. We had some members of the unit undertake canvassing around Fergus raising awareness of the CamSafe Program.

Crime Stoppers

Sarah Bowers-Peter, Program Coordinator CSGW

Presentations have taken over the calendar at Crime Stoppers Guelph Wellington (CSGW). In October alone, CSGW has delivered 28 Cyber Safety and Fraud Talk presentations.

Feedback from the Cyber Safety presentations has been overwhelmingly positive and requests for dates continue. At this time, there is no more availability for 2024, and schools will be scheduled for 2025. While most presentations are to schools in Upper Grand District School Board, Wellington Catholic District School Board has a few schools on the calendar as well.

The Board of Directors continues to be engaged in community events, such as seniors showcases and even monthly media opportunities. Volunteering is the theme currently as the CSGW Board has lost a couple of members. The Board can be a maximum of 20 members and currently sits at 11. Anyone who is interest in volunteering or knows someone who wants to contribute to community safety, is encouraged to go to the CSGW website (www.csgw.tips) to learn about being a Board Member and to complete the application form.



Court

Supervisor: Sergeant Shaugn Rogers

Wellington County Court Bureau highlights:

- Arrangements made with the POA prosecutor for officer training on Provincial Offence court attendance and giving testimony. This will take place on two separate dates in November.
- Improving our tracking of individuals sentenced to Probation and/or Conditional Sentence Orders, as well as 810 Peace Bonds to properly monitor these persons (compliance checks, etc.) in Wellington County.
- Implemented new procedures for tracking the entry and removal of local wanted persons on a warrant “tracker” database. Efforts being made to improve communication between officers with the attempts being made to determine their whereabouts.



Personnel & Acknowledgements

Wellington County Charity Golf Tournament

The Wellington County OPP Charity Golf Tournament returned again this year in support of “Boots on the Ground-Peer Support for First Responders.”

The tournament was held on September 10th at the Guelph Lakes Golf and Country Club. Approximately 136 golfers participated including Wellington County OPP members, retirees, local paramedics, firefighters, and many members of the community.

In total, \$15,000.00 was raised and presented to Boots on the Ground chairman/founder, Dave MacLennan on October 21st.



Special thank you to PC Kirk MacDonald for organizing the event, the multiple volunteers that assisted the day of the event and to the Staff of the Guelph Lakes Golf and Country Club.



Report Summary

October was another busy month for Wellington County OPP. Calls for Service combined with the numerous Fall community events across the County kept everyone quite busy. On top of that the Traffic Management Unit and frontline officers took part in Operation Impact on the Thanksgiving weekend to educate drivers on road safety and lay charges when necessary. The Community Street Crime Unit was kept consistently busy following leads, drafting warrants, and assisting other Wellington County and neighbouring units with their investigations. The Community Response Unit was kept busy with the Offender Management & Apprehension Program and was proactively engaging with all members of the community, especially young people, through multiple presentations on online safety/online bullying and community partners. By reaching out to young people we can proactively prevent or stop negative or criminal actions within the community. And we can hopefully build upon the trust that the local community already has for their local police service.

All in all, October brought a demanding workload, but Wellington County OPP rose to the occasion and was able to provide security and safety to the citizens Wellington County.

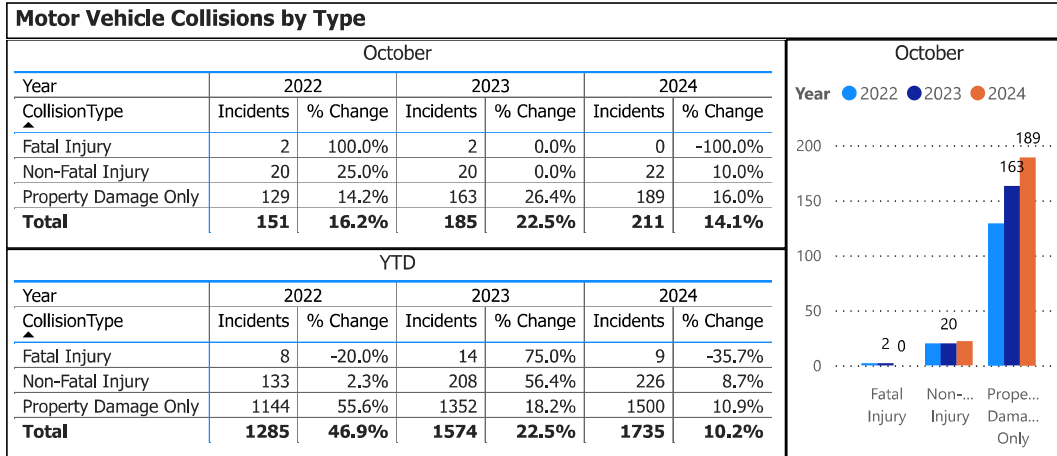
As a final send off before the new year, once again we want to remind everyone that winter is coming.

Remember to install your winter tires, slow down, adjust your driving to the weather conditions and give yourself extra time to safely reach your destination. Our actions can save lives!

Wellington County OPP would like to wish everyone a safe holiday season and a happy New Year.



OPP Detachment Board Report Collision Reporting System October 2024



Data source (Collision Reporting System) date:
04-Nov-2024

Detachment: 6T - WELLINGTON COUNTY (Centre Wellington)
Location code(s): 6T00 - WELLINGTON COUNTY (Centre Wellington), 6T10 - WELLINGTON COUNTY (South Wellington), 6T40 - WELLINGTON COUNTY (North Wellington)

Area(s): ALL
Data source date:
04-Nov-2024

Report Generated on:
06-Nov-2024 9:28:03 AM

OPP Detachment Board Report Collision Reporting System October 2024

Fatalities in Detachment Area - Incidents									
October									
Type	Motor Vehicle			Motorized Snow Vehicle			Off-Road Vehicle		
Year	Alcohol/Drugs	Incidents	% Change	Alcohol/Drugs	Incidents	% Change	Alcohol/Drugs	Incidents	% Change
2022	0	2	100.0%	0	0	--	0	0	--
2023	0	2	0.0%	0	0	--	0	0	--
2024	0	0	-100.0%	0	0	--	0	0	--

YTD									
Type	Motor Vehicle			Motorized Snow Vehicle			Off-Road Vehicle		
Year	Alcohol/Drugs	Incidents	% Change	Alcohol/Drugs	Incidents	% Change	Alcohol/Drugs	Incidents	% Change
2022	3	7	-30.0%	0	0	--	0	1	--
2023	4	14	100.0%	0	0	--	0	0	-100.0%
2024	0	7	-50.0%	0	0	--	1	2	--

Fatalities in Detachment Area - Persons Killed						
October						
Type	Motor Vehicle		Motorized Snow Vehicle		Off-Road Vehicle	
Year	Persons Killed	% Change	Persons Killed	% Change	Persons Killed	% Change
2022	2	100.0%	0	--	0	--
2023	3	50.0%	0	--	0	--
2024	0	-100.0%	0	--	0	--

YTD						
Type	Motor Vehicle		Motorized Snow Vehicle		Off-Road Vehicle	
Year	Persons Killed	% Change	Persons Killed	% Change	Persons Killed	% Change
2022	10	0.0%	0	--	1	--
2023	15	50.0%	0	--	0	-100.0%
2024	8	-46.7%	0	--	2	--

Primary Causal Factors in Fatal Motor Vehicle Collisions							
October				YTD			
	2022	2023	2024		2022	2023	2024
Speeding	0	0	0	Speeding	0	3	2
Speeding % Change	-100.0%	--	--	Speeding % Change	-100.0%	--	-33.3%
Distracted	1	0	0	Distracted	1	2	4
Distracted % Change	--	-100.0%	--	Distracted % Change	0.0%	100.0%	100.0%
Alcohol/Drugs	0	0	0	Alcohol/Drugs	3	4	1
Alcohol/Drugs % Change	--	--	--	Alcohol/Drugs % Change	0.0%	33.3%	-75.0%
Wildlife	0	0	0	Wildlife	0	0	0
Wildlife % Change	--	--	--	Wildlife % Change	--	--	--
NoSeatbelt	0	0	0	NoSeatbeltYTD	2	3	1
NoSeatbelt YoY%	--	--	--	NoSeatbeltYTD YoY%	0.0%	50.0%	-66.7%

October									
Speeding, Distracted, Al...	1	0	0	0	0	0	0	0	0
	2022	2023	2024	2022	2023	2024	2022	2023	2024

Data source (Collision Reporting System) date:
04-Nov-2024

Detachment: 6T - WELLINGTON COUNTY (Centre Wellington)
Location code(s): 6T00 - WELLINGTON COUNTY (Centre Wellington), 6T10 - WELLINGTON COUNTY (South Wellington), 6T40 - WELLINGTON COUNTY (North Wellington)

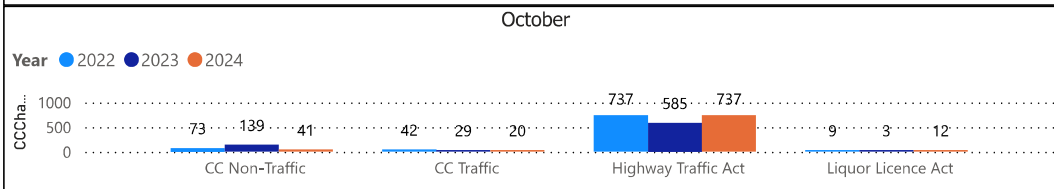
Area(s): ALL
Data source date:
04-Nov-2024

Report Generated on:
06-Nov-2024 9:28:03 AM

OPP Detachment Board Report Records Management System October 2024

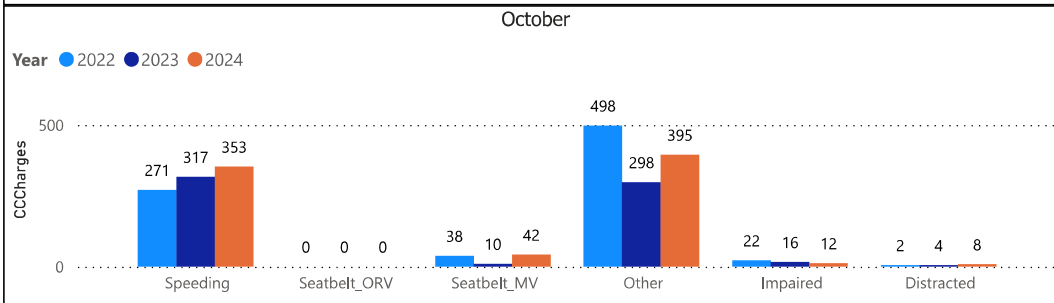
Criminal Code and Provincial Statute Charges Laid						
October						
Year	2022		2023		2024	
ChargeCategory1	Offence Count	% Change	Offence Count	% Change	Offence Count	% Change
CC Non-Traffic	73	7.4%	139	90.4%	41	-70.5%
CC Traffic	42	10.5%	29	-31.0%	20	-31.0%
Highway Traffic Act	737	60.6%	585	-20.6%	737	26.0%
Liquor Licence Act	9	200.0%	3	-66.7%	12	300.0%
Total	861	51.6%	756	-12.2%	810	7.1%

YTD						
Year	2022		2023		2024	
ChargeCategory1	Offence Count	% Change	Offence Count	% Change	Offence Count	% Change
CC Non-Traffic	821	-14.0%	1158	41.0%	1142	-1.4%
CC Traffic	287	13.9%	298	3.8%	295	-1.0%
Highway Traffic Act	5179	32.7%	5894	13.8%	8082	37.1%
Liquor Licence Act	62	113.8%	71	14.5%	68	-4.2%
Total	6349	23.5%	7421	16.9%	9587	29.2%



Traffic Related Charges						
October						
Year	2022		2023		2024	
ChargeCategory2	Offence Count	% Change	Offence Count	% Change	Offence Count	% Change
Speeding	271	3.8%	317	17.0%	353	11.4%
Seatbelt_ORV	0	--	0	--	0	--
Seatbelt_MV	38	65.2%	10	-73.7%	42	320.0%
Other	498	145.3%	298	-40.2%	395	32.6%
Impaired	22	0.0%	16	-27.3%	12	-25.0%
Distracted	2	-80.0%	4	100.0%	8	100.0%

YTD						
Year	2022		2023		2024	
ChargeCategory2	Offence Count	% Change	Offence Count	% Change	Offence Count	% Change
Speeding	2680	11.4%	2771	3.4%	3891	40.4%
Seatbelt_ORV	0	--	1	--	4	300.0%
Seatbelt_MV	313	36.1%	285	-8.9%	565	98.2%
Other	2619	71.5%	3318	26.7%	4218	27.1%
Impaired	195	24.2%	195	0.0%	187	-4.1%
Distracted	78	44.4%	64	-17.9%	91	42.2%

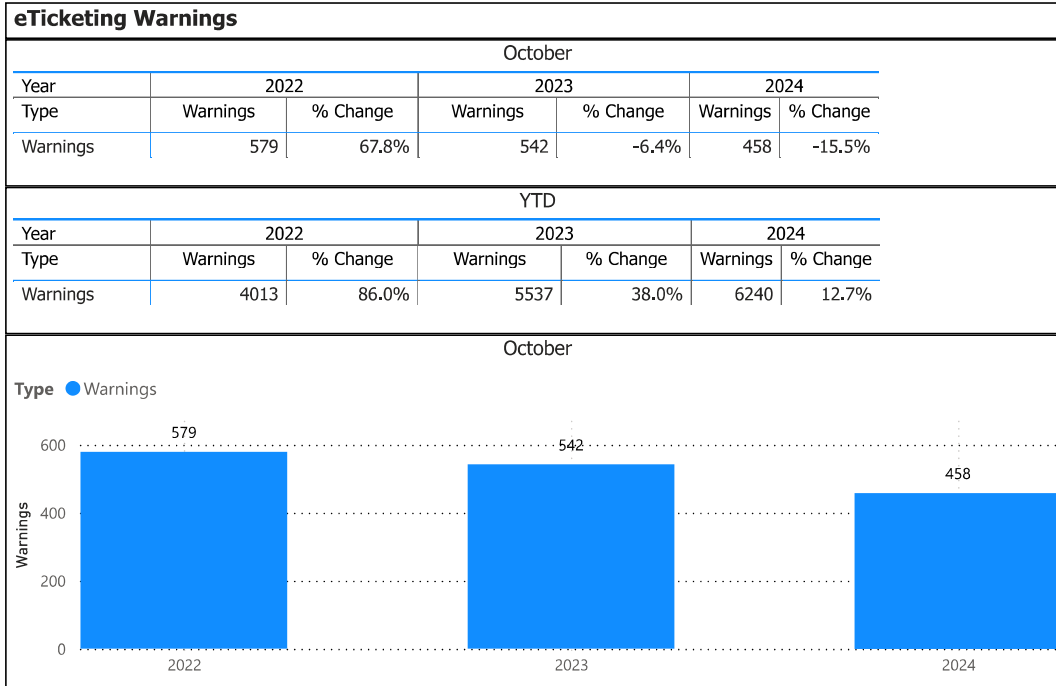


Detachment: 6T - WELLINGTON COUNTY (Centre Wellington)
 Location code(s): 6T00 - WELLINGTON COUNTY (Centre Wellington), 6T10 - WELLINGTON COUNTY (South Wellington), 6T40 - WELLINGTON COUNTY (North Wellington)

Area(s): ALL
 Data source date:
 04-Nov-2024

Report Generated on:
 06-Nov-2024 9:28:03 AM

**OPP Detachment Board Report
Records Management System
October 2024**



Detachment: 6T - WELLINGTON COUNTY (Centre Wellington)

Location code(s): 6T00 - WELLINGTON COUNTY (Centre Wellington), 6T10 - WELLINGTON COUNTY (South Wellington), 6T40 - WELLINGTON COUNTY (North Wellington)

Area(s): ALL

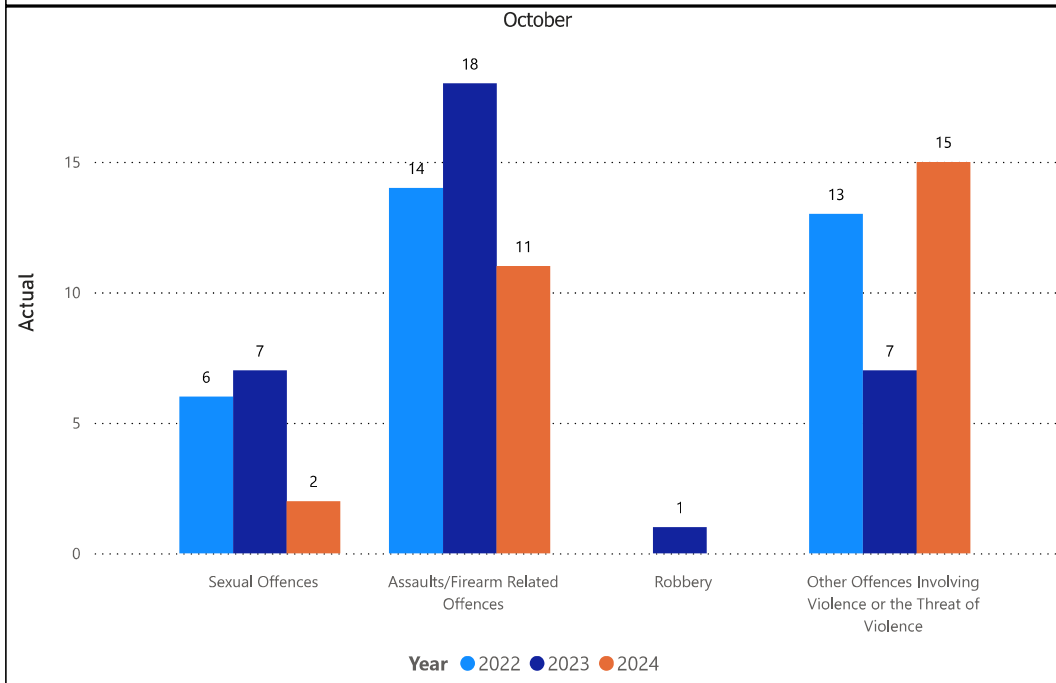
Data source date:
04-Nov-2024

Report Generated on:
06-Nov-2024 9:28:03 AM

OPP Detachment Board Report Records Management System October 2024

Violent Crime						
October						
Year	2022		2023		2024	
ViolationGrp	Actual	% Change	Actual	% Change	Actual	% Change
Homicides	0	--	0	--	0	--
Other Offences Causing Death	0	--	0	--	0	--
Attempted Murder	0	--	0	--	0	--
Sexual Offences	6	-25.0%	7	16.7%	2	-71.4%
Assaults/Firearm Related Offences	14	0.0%	18	28.6%	11	-38.9%
Offences Resulting in the Deprivation of Freedom	0	--	0	--	0	--
Robbery	0	--	1	--	0	-100.0%
Other Offences Involving Violence or the Threat of Violence	13	30.0%	7	-46.2%	15	114.3%
Offences in Relation to Sexual Services	0	--	0	--	0	--
Total	33	3.1%	33	0.0%	28	-15.2%

YTD						
Year	2022		2023		2024	
ViolationGrp	Actual	% Change	Actual	% Change	Actual	% Change
Homicides	0	--	1	--	0	-100.0%
Other Offences Causing Death	0	--	0	--	0	--
Attempted Murder	0	--	0	--	0	--
Sexual Offences	53	32.5%	68	28.3%	58	-14.7%
Assaults/Firearm Related Offences	122	-14.7%	176	44.3%	189	7.4%
Offences Resulting in the Deprivation of Freedom	2	100.0%	5	150.0%	2	-60.0%
Robbery	2	-50.0%	4	100.0%	1	-75.0%
Other Offences Involving Violence or the Threat of Violence	114	14.0%	118	3.5%	132	11.9%
Offences in Relation to Sexual Services	0	--	0	--	0	--
Total	293	1.7%	372	27.0%	382	2.7%



Detachment: 6T - WELLINGTON COUNTY (Centre Wellington)

Location code(s): 6T00 - WELLINGTON COUNTY (Centre Wellington), 6T10 - WELLINGTON COUNTY (South Wellington), 6T40 - WELLINGTON COUNTY (North Wellington)

Area(s): ALL

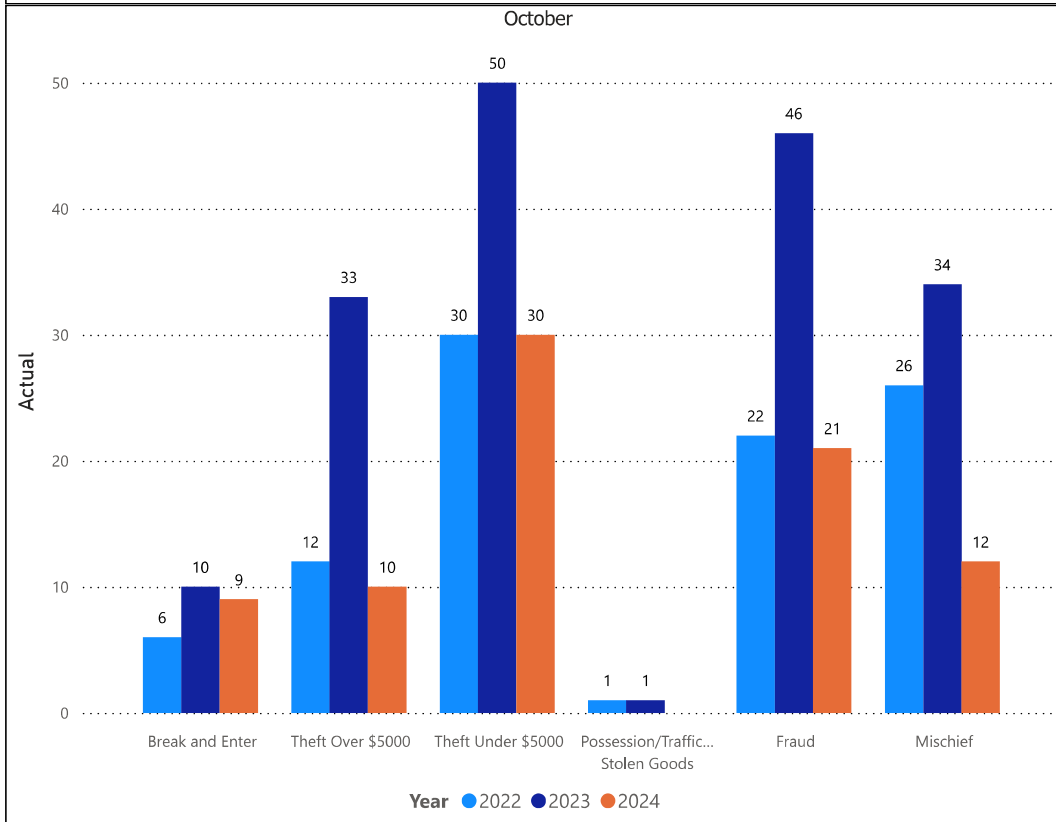
Data source date:
04-Nov-2024

Report Generated on:
06-Nov-2024 9:28:03 AM

OPP Detachment Board Report Records Management System October 2024

Property Crime						
October						
Year	2022		2023		2024	
ViolationGrp	Actual	% Change	Actual	% Change	Actual	% Change
Arson	0	--	0	--	0	--
Break and Enter	6	-33.3%	10	66.7%	9	-10.0%
Theft Over \$5000	12	9.1%	33	175.0%	10	-69.7%
Theft Under \$5000	30	20.0%	50	66.7%	30	-40.0%
Possession/Trafficking Stolen Goods	1	0.0%	1	0.0%	0	-100.0%
Fraud	22	-12.0%	46	109.1%	21	-54.3%
Mischief	26	-43.5%	34	30.8%	12	-64.7%
Total	97	-17.1%	174	79.4%	82	-52.9%

YTD						
Year	2022		2023		2024	
ViolationGrp	Actual	% Change	Actual	% Change	Actual	% Change
Arson	5	400.0%	12	140.0%	2	-83.3%
Break and Enter	134	31.4%	97	-27.6%	106	9.3%
Theft Over \$5000	154	28.3%	152	-1.3%	169	11.2%
Theft Under \$5000	418	2.2%	353	-15.6%	392	11.0%
Possession/Trafficking Stolen Goods	21	75.0%	21	0.0%	10	-52.4%
Fraud	278	-5.4%	382	37.4%	322	-15.7%
Mischief	245	-4.7%	221	-9.8%	168	-24.0%
Total	1255	5.0%	1238	-1.4%	1169	-5.6%



Detachment: 6T - WELLINGTON COUNTY (Centre Wellington)

Location code(s): 6T00 - WELLINGTON COUNTY (Centre Wellington), 6T10 - WELLINGTON COUNTY (South Wellington), 6T40 - WELLINGTON COUNTY (North Wellington)

Area(s): ALL

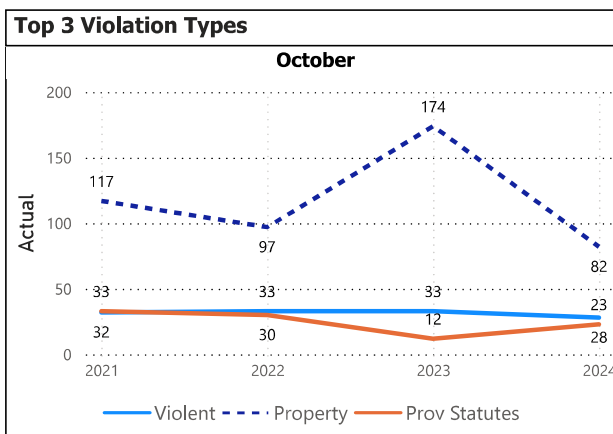
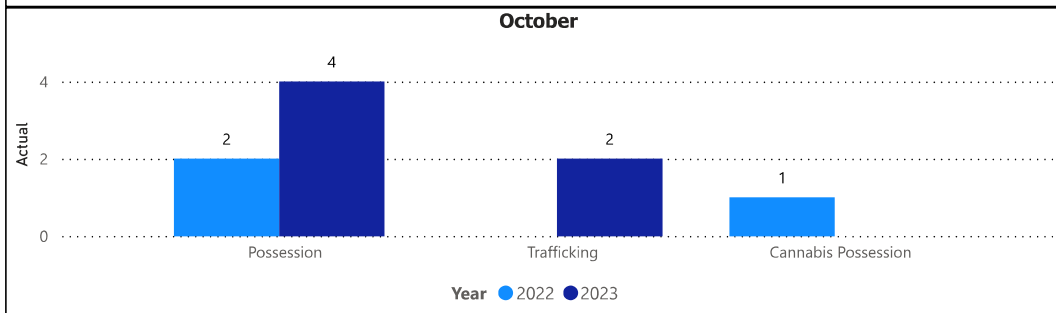
Data source date:
04-Nov-2024

Report Generated on:
06-Nov-2024 9:28:03 AM

OPP Detachment Board Report Records Management System October 2024

Drug Crime						
October						
Year	2022		2023		2024	
ViolationGrp	Actual	% Change	Actual	% Change	Actual	% Change
Possession	2	-33.3%	4	100.0%	0	-100.0%
Trafficking	0	-100.0%	2	--	0	-100.0%
Importation & Production	0	--	0	--	0	--
Cannabis Possession	1	--	0	-100.0%	0	--
Cannabis Distribution	0	--	0	--	0	--
Cannabis Sale	0	-100.0%	0	--	0	--
Cannabis Importation & Exportation	0	--	0	--	0	--
Cannabis Production	0	--	0	--	0	--
Other Cannabis Violations	0	--	0	--	0	--
Total	3	-57.1%	6	100.0%	0	-100.0%

YTD						
Year	2022		2023		2024	
ViolationGrp	Actual	% Change	Actual	% Change	Actual	% Change
Possession	20	-33.3%	17	-15.0%	18	5.9%
Trafficking	12	-14.3%	9	-25.0%	12	33.3%
Importation & Production	0	-100.0%	0	--	1	--
Cannabis Possession	2	--	1	-50.0%	0	-100.0%
Cannabis Distribution	4	300.0%	0	-100.0%	0	--
Cannabis Sale	0	-100.0%	0	--	1	--
Cannabis Importation & Exportation	0	--	0	--	0	--
Cannabis Production	1	-50.0%	1	0.0%	1	0.0%
Other Cannabis Violations	0	--	0	--	0	--
Total	39	-22.0%	28	-28.2%	33	17.9%



Top 5 Violation Groups					
October					
ViolationGrp	2021	2022	2023	2024	Total
Theft Under \$5000	25	30	50	30	135
Mischief	46	26	34	12	118
Fraud	25	22	46	21	114
Provincial Statutes	33	30	12	23	98
Theft Over \$5000	11	12	33	10	66

Detachment: 6T - WELLINGTON COUNTY (Centre Wellington)

Location code(s): 6T00 - WELLINGTON COUNTY (Centre Wellington), 6T10 - WELLINGTON COUNTY (South Wellington), 6T40 - WELLINGTON COUNTY (North Wellington)

Area(s): ALL

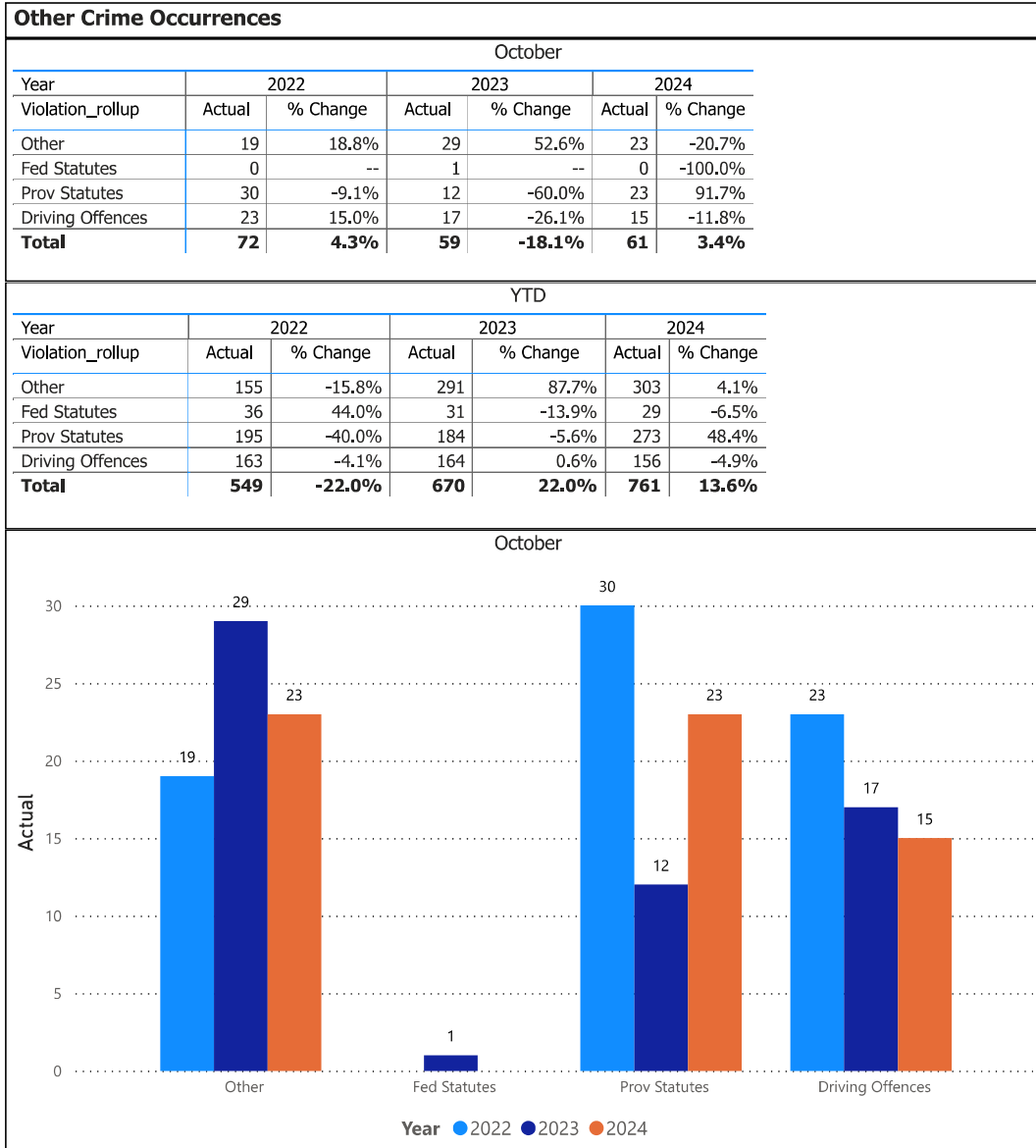
Data source date:

04-Nov-2024

Report Generated on:

06-Nov-2024 9:28:03 AM

**OPP Detachment Board Report
Records Management System
October 2024**



Detachment: 6T - WELLINGTON COUNTY (Centre Wellington)

Location code(s): 6T00 - WELLINGTON COUNTY (Centre Wellington), 6T10 - WELLINGTON COUNTY (South Wellington), 6T40 - WELLINGTON COUNTY (North Wellington)

Area(s): ALL

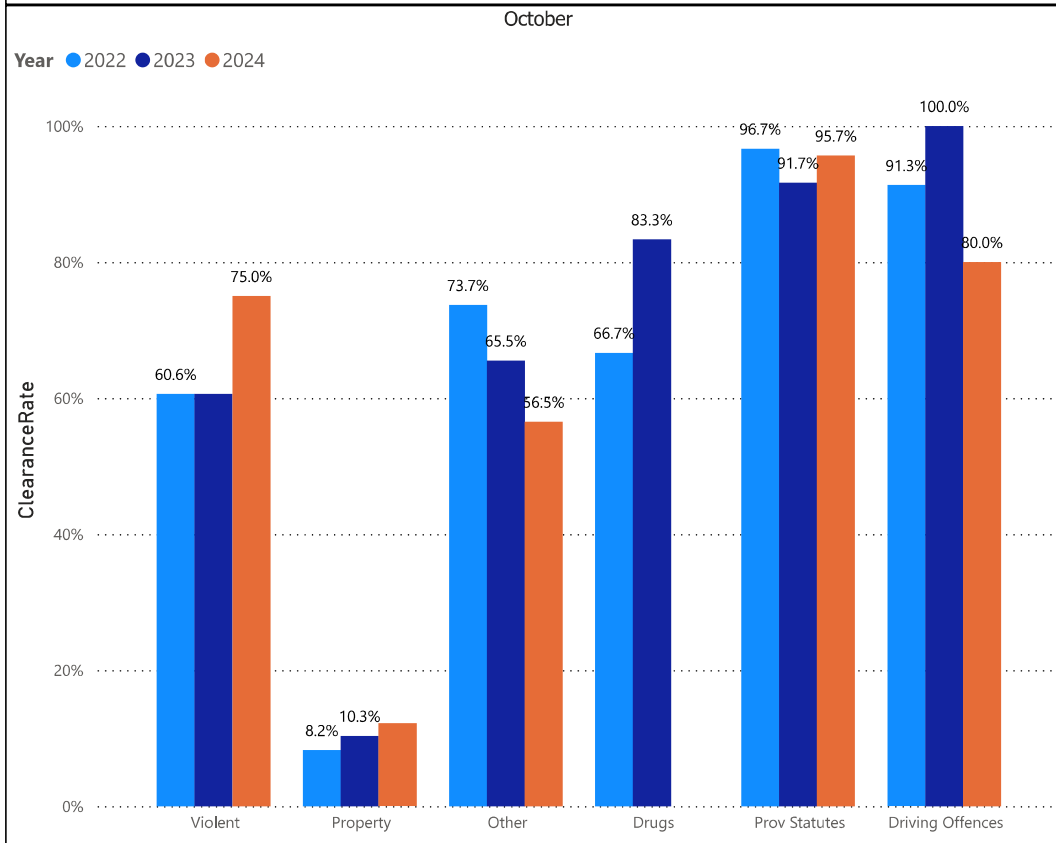
Data source date:
04-Nov-2024

Report Generated on:
06-Nov-2024 9:28:03 AM

OPP Detachment Board Report Records Management System October 2024

Clearance Rate						
October						
Year	2022		2023		2024	
	%	% Change	%	% Change	%	% Change
Violent	60.6%	2.1%	60.6%	0.0%	75.0%	23.8%
Property	8.2%	-25.8%	10.3%	25.4%	12.2%	17.9%
Other	73.7%	31.0%	65.5%	-11.1%	56.5%	-13.7%
Drugs	66.7%	-22.2%	83.3%	25.0%		-100.0%
Fed Statutes		--	0.0%	--		--
Prov Statutes	96.7%	2.9%	91.7%	-5.2%	95.7%	4.3%
Driving Offences	91.3%	-3.9%	100.0%	9.5%	80.0%	-20.0%

YTD						
Year	2022		2023		2024	
	%	% Change	%	% Change	%	% Change
Violation_rollup						
Violent	56.3%	-12.8%	62.4%	10.7%	63.4%	1.6%
Property	11.5%	-17.4%	15.3%	33.8%	13.5%	-11.9%
Other	52.9%	-11.5%	62.5%	18.2%	65.3%	4.5%
Drugs	79.5%	-0.6%	89.3%	12.3%	69.7%	-21.9%
Fed Statutes	100.0%	13.6%	87.1%	-12.9%	100.0%	14.8%
Prov Statutes	96.4%	8.8%	94.0%	-2.5%	94.9%	0.9%
Driving Offences	88.3%	-0.5%	86.6%	-2.0%	76.3%	-11.9%



Detachment: 6T - WELLINGTON COUNTY (Centre Wellington)

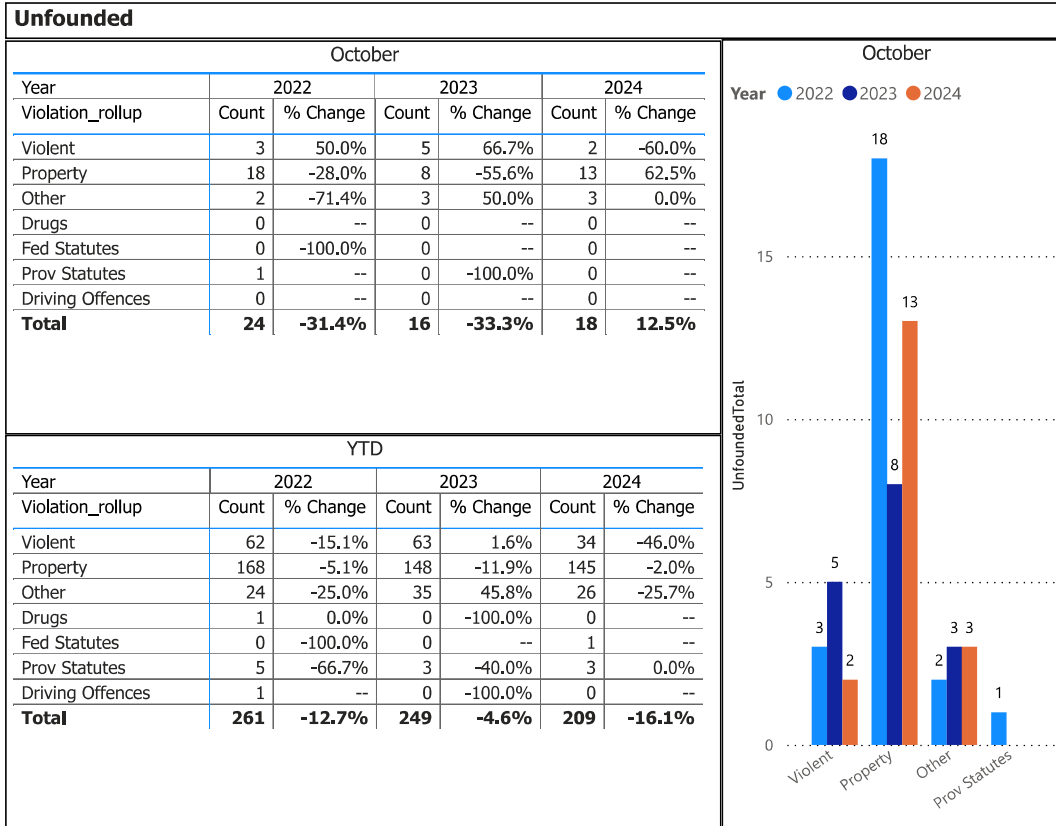
Location code(s): 6T00 - WELLINGTON COUNTY (Centre Wellington), 6T10 - WELLINGTON COUNTY (South Wellington), 6T40 - WELLINGTON COUNTY (North Wellington)

Area(s): ALL

Data source date:
04-Nov-2024

Report Generated on:
06-Nov-2024 9:28:03 AM

OPP Detachment Board Report Records Management System October 2024



Detachment: 6T - WELLINGTON COUNTY (Centre Wellington)

Location code(s): 6T00 - WELLINGTON COUNTY (Centre Wellington), 6T10 - WELLINGTON COUNTY (South Wellington), 6T40 - WELLINGTON COUNTY (North Wellington)

Area(s): ALL

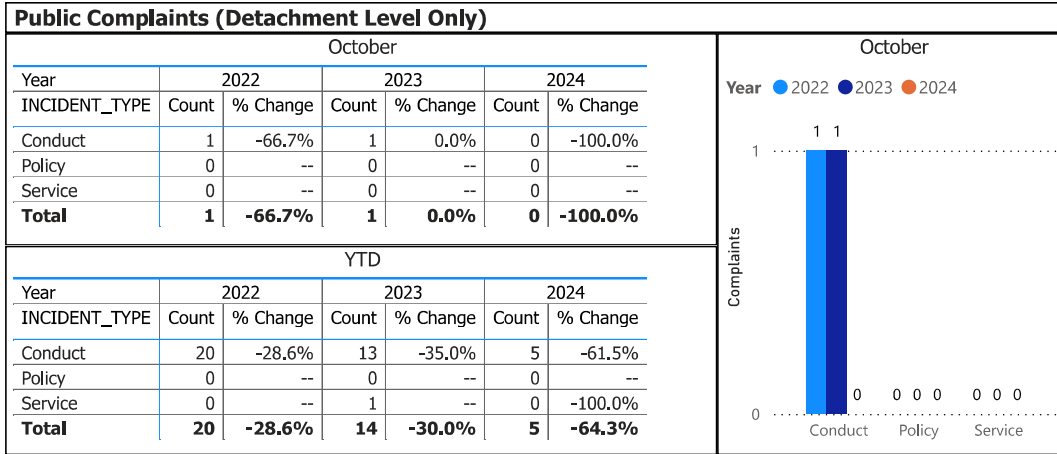
Data source date:

10-May-2024

Report Generated on:

06-Nov-2024 9:28:03 AM

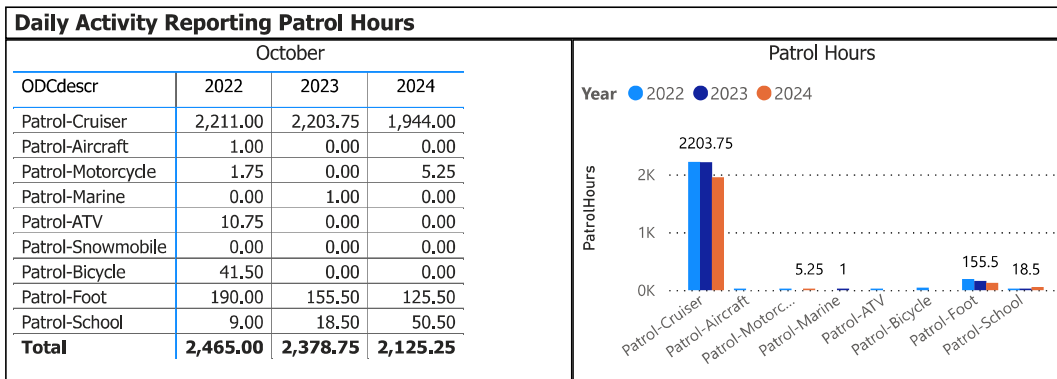
OPP Detachment Board Report Records Management System October 2024



Data source: RMS Data Feed
Ontario Provincial Police, Professional Standards Bureau Commander Reports - File Manager System

Data source date:
04-Nov-2024

Daily Activity Reporting



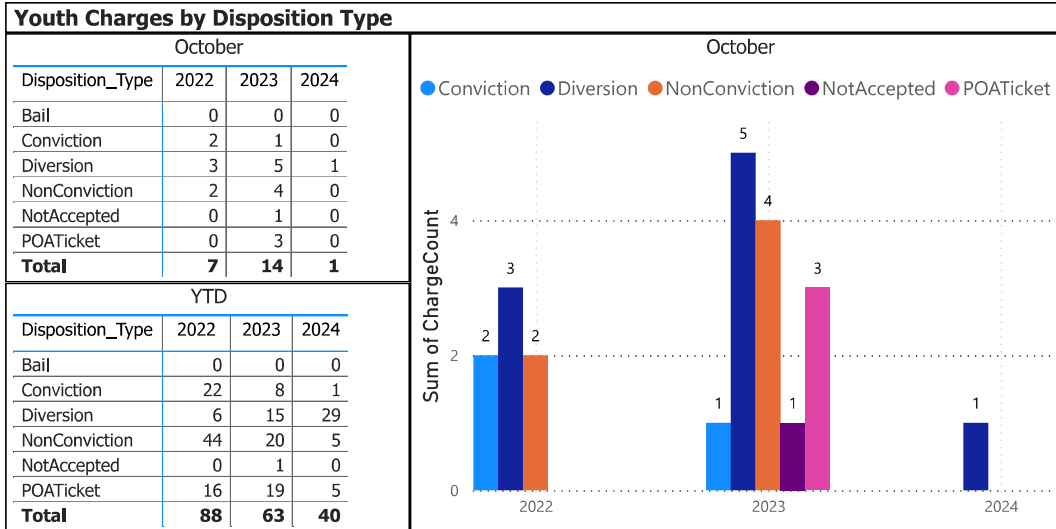
Data source (Daily Activity Reporting System) date:
04-Nov-2024

Detachment: 6T - WELLINGTON COUNTY (Centre Wellington)
Location code(s): 6T00 - WELLINGTON COUNTY (Centre Wellington), 6T10 - WELLINGTON COUNTY (South Wellington), 6T40 - WELLINGTON COUNTY (North Wellington)

Data source date:
04-Nov-2024

Report Generated on:
06-Nov-2024 9:28:03 AM

OPP Detachment Board Report Records Management System October 2024



Youth Charges by Disposition and Occurrence Type

October					
Year	2024				Total
OccType	Conviction	Diversion	NonConviction	NotAccepted	
Threats	0	1	0	0	1
Total	0	1	0	0	1

YTD							
Year	2024						Total
OccType	Bail	Conviction	Diversion	NonConviction	NotAccepted	POATicket	
Assault	0	0	4	0	0	0	4
Bail violations		0	0	4	0	0	4
eTicket - Person		0	0	0	0	3	3
Indecent acts		0	1	0	0		1
Mischief		0	15	0	0		15
Police pursuit		0	0	1	0		1
Sexual assault		0	1	0	0		1
Theft		0	4	0	0		4
Threats		0	1	0	0		1
Traffic enforcement - H.T.A.		1	2	0	0	2	5
Trouble with youth		0	1	0	0	0	1
Total	0	1	29	5	0	5	40

The tables and chart on this page present summarized youth charges by disposition and occurrence type that have been recorded in the OPP Niche RMS application. Of note... the Niche data sourced for this report page only lists youth charges that have had a disposition type entered against them. Therefore, please be aware that the counts of youth charges entries on this report page are under stating the potential sum of youth charges that are in OPP Niche RMS.

Detachment: 6T - WELLINGTON COUNTY (Centre Wellington)

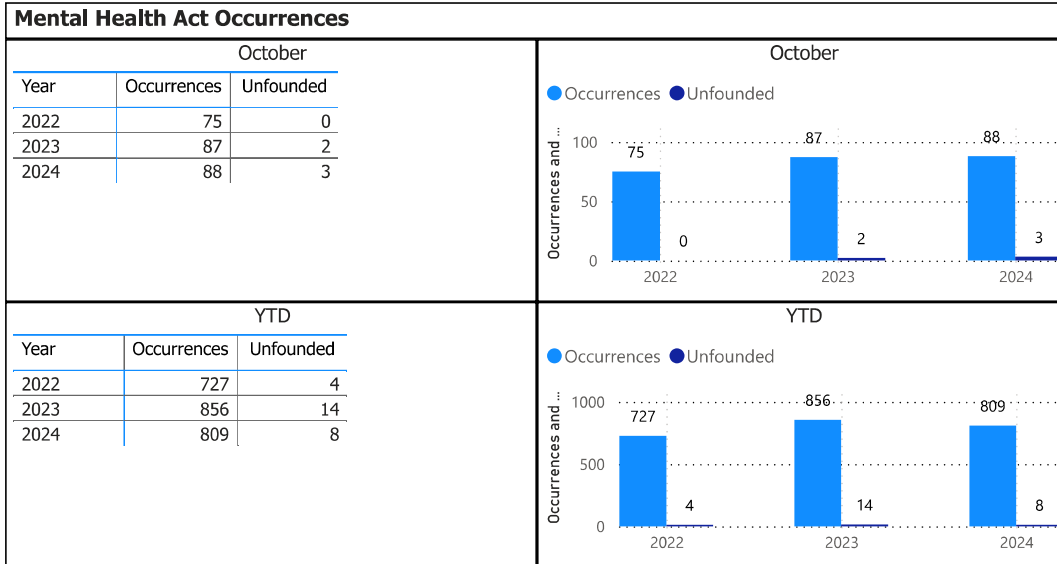
Location code(s): 6T00 - WELLINGTON COUNTY (Centre Wellington), 6T10 - WELLINGTON COUNTY (South Wellington), 6T40 - WELLINGTON COUNTY (North Wellington)

Area(s): ALL

Data source date:
04-Nov-2024

Report Generated on:
06-Nov-2024 9:28:03 AM

OPP Detachment Board Report Records Management System October 2024



October		
Year	2024	
OccurrenceType	Occurrences	Unfounded
	1	0
Ambulance Assistance	4	0
Assist Other Non Police Agency	1	0
Attempt or threat of suicide	7	0
Bail violations	1	0
Child Pornography	1	0
Cyber Enabled Crime - Online Fraud	1	0
Disturb the peace	1	0
Domestic dispute	4	1
eTicket - Vehicle	1	0
Family dispute	7	0
Mental health act	48	1
Missing person located	1	1
Person Well-Being Check	1	0
Police assistance	3	0
Shoplift	2	0
Sudden death	1	0
Threats	1	0
Trouble with youth	2	0
Total	88	3

Detachment: 6T - WELLINGTON COUNTY (Centre Wellington)

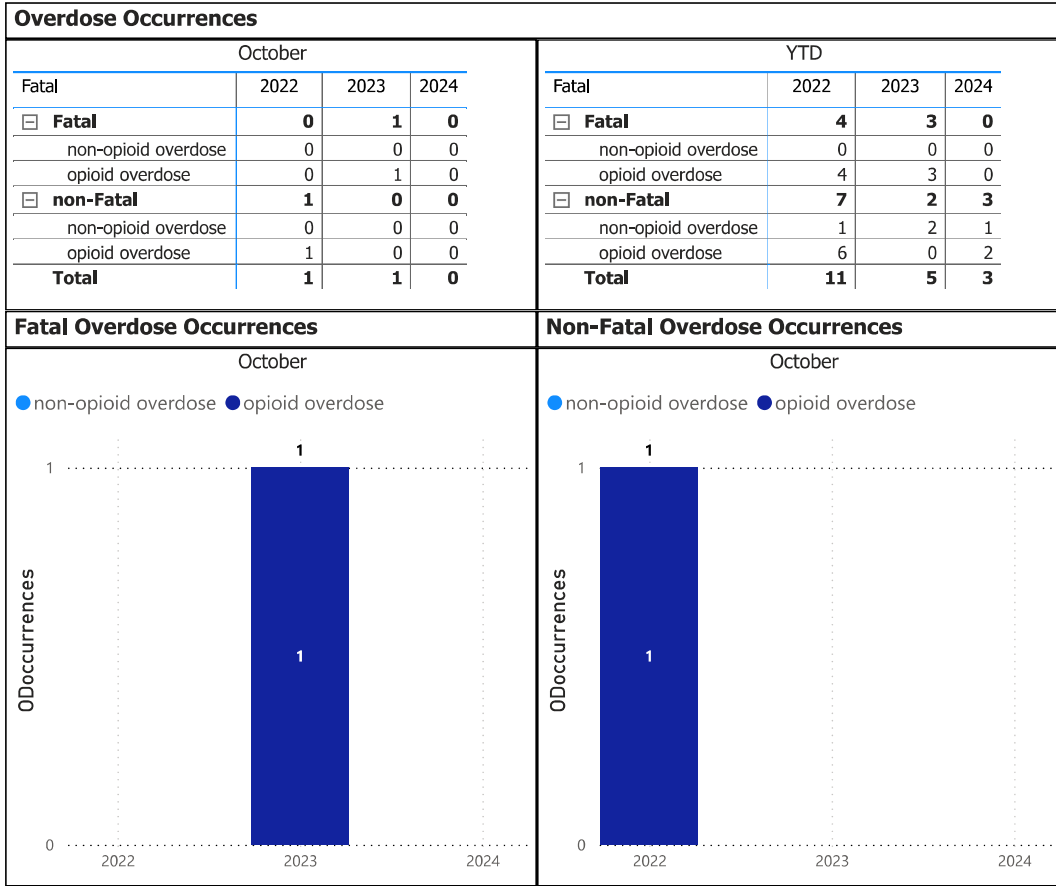
Location code(s): 6T00 - WELLINGTON COUNTY (Centre Wellington), 6T10 - WELLINGTON COUNTY (South Wellington), 6T40 - WELLINGTON COUNTY (North Wellington)

Area(s): ALL

Data source date:
04-Nov-2024

Report Generated on:
06-Nov-2024 9:28:03 AM

OPP Detachment Board Report Records Management System October 2024



Detachment: 6T - WELLINGTON COUNTY (Centre Wellington)

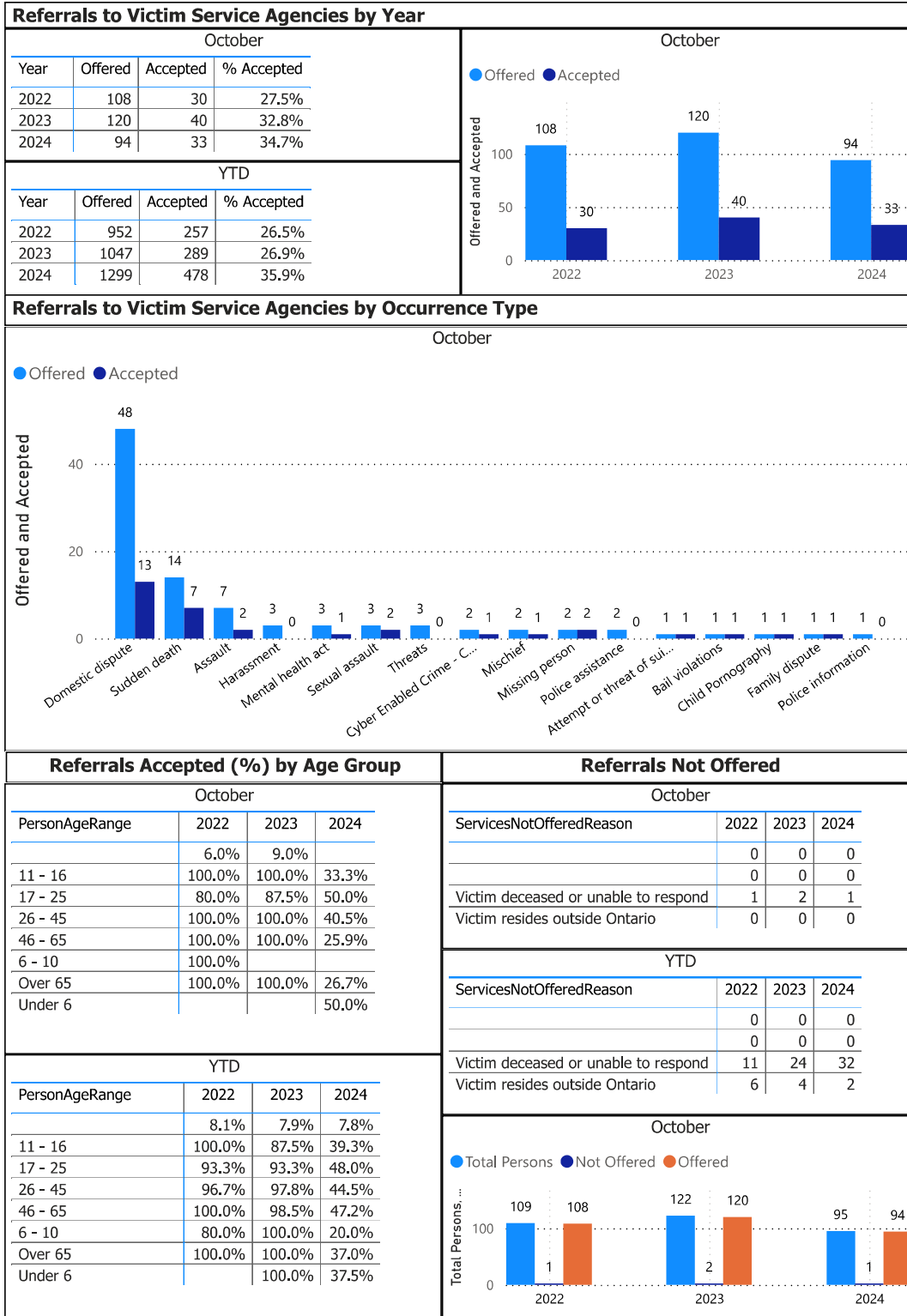
Location code(s): 6T00 - WELLINGTON COUNTY (Centre Wellington), 6T10 - WELLINGTON COUNTY (South Wellington), 6T40 - WELLINGTON COUNTY (North Wellington)

Area(s): ALL

Data source date:
04-Nov-2024

Report Generated on:
06-Nov-2024 9:28:03 AM

OPP Detachment Board Report Records Management System October 2024



Detachment: 6T - WELLINGTON COUNTY (Centre Wellington)

Location code(s): 6T00 - WELLINGTON COUNTY (Centre Wellington), 6T10 - WELLINGTON COUNTY (South Wellington), 6T40 - WELLINGTON COUNTY (North Wellington)

Area(s): ALL

Data source date:
04-Nov-2024

Report Generated on:
06-Nov-2024 9:28:03 AM

Contacts

In an emergency DIAL 911

You can also call
1 888 310 1122
1 888 310 1133 (TTY)
Anywhere in Ontario, 24-hour toll free

Non-emergency calls

Please call
1 888 310 1122
1 888 310 1133 (TTY)
Anywhere in Ontario, 24-hour toll free

County of Wellington OPP Detachments

Centre Wellington Operations Centre

371 Charles Allan Way,
Fergus, ON N1M 2W3
Non-Emergency 519-846-5930
Fax 519-846-5460

South Wellington Operations Centre

5145 Wellington Road 27,
Rockwood, ON N0B 2K0
Non-Emergency 519-856-1506
Fax 519-846-2327

North Wellington Operations Centre

6725 Wellington Road 109,
Palmerston, ON N0G 2P0
Non-Emergency 519-343-5770
Fax 519-343-5780

OPP General Headquarters

Ontario Provincial Police
General Headquarters
Lincoln M. Alexander Building
777 Memorial Avenue
Orillia, ON
L3V 7V3

General inquiries: 705 329-6111
8:00 am to 4:00 pm, Monday to Friday

-  www.opp.ca
-  [Report a Crime Online](#)
-  [News releases](#)
-  [Upcoming events](#)
-  [Social media](#)



© 2024 Ontario Provincial Police – All rights reserved